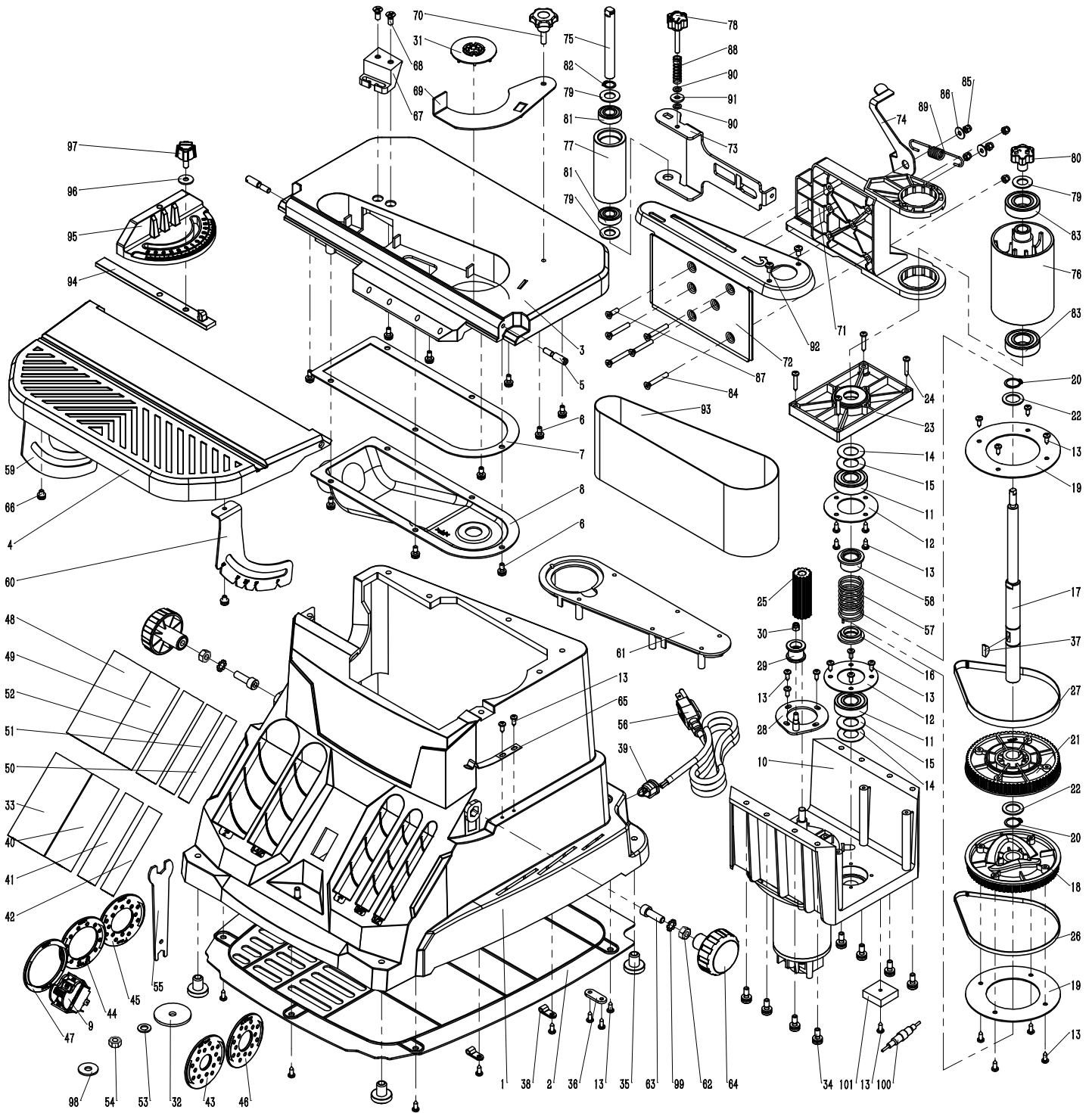


# PARTS DIAGRAM

## OSCILLATING BELT/SPINDLE SANDER 50-310



**NOTE:** Please reference the Manufacturer's Part Number when calling for Replacement Parts.

For Parts under Warranty, the Serial Number of your machine is required.

**See pages 16 & 17 for the Parts Lists**

## PARTS LIST - 50-310

### 50-310 OSCILLATING SPINDLE/BELT SANDER

KEY NO.	DESCRIPTION	QTY.	PART NO.
1	Base	1	P50-310-1
2	Baseplate	1	P50-310-2
3	Fixed work table	1	P50-310-3
4	Movable work table	1	P50-310-4
5	Pin shaft	2	P50-310-5
6	Phillips screw, spring washer, flat washer assembly M5x12	12	P50-320-15
7	Rubber washer 282x110x1.5mm	1	P50-310-7
8	Dust port	1	P50-310-8
9	Switch HY7	1	P50-320-10
10	DC motor	1	P50-320-23
11	Bearing 6203-2RZ	2	P50-320-30
12	Press plate	2	P50-320-26
13	Self tapping screw ST4.2x12	32	P50-320-2
14	Rubber pad	2	P50-320-24
15	Felt pad	2	P50-320-25
16	Shaft sleeve 2	1	P50-320-27
17	Main shaft	1	P50-310-17
18	69 Tooth Cog wheel	1	P50-320-21
19	Pressure plate with wheel	2	P50-320-18
20	Retaining Ring 17	2	P50-320-16
21	70 Tooth wheel	1	P50-320-20
22	Spring cushion	2	P50-320-17
23	Support board	1	P50-320-31
24	Self tapping screw ST4.2x25	4	P50-320-32
25	Motor pulley	1	P50-320-34
26	Cog belt 160XLx6mm	1	P50-320-22
27	Cog belt 160XLx10mm	1	P50-320-19
28	Tightening bracket assembly	1	P50-320-33
29	Tightening wheel assembly	1	P50-320-35
30	Non-metallic nut M5	1	P50-320-36
31	Connector	1	P50-310-31
32	Drum plate	1	P50-320-40
33	2" Drum	1	P50-320-38
34	Phillips screw, spring washer, flat washer assembly M6x16	8	P50-320-3
35	Foot	4	P50-320-1
36	Cord joint	1	P50-320-6
37	Semicircle key 5x6.5	1	P50-320-28
38	Install wire fixing button UL-1/4	2	P50-310-38
39	Cord Clip 6P4	1	P50-320-9
40	1.5" Drum	1	P50-320-57
41	1" Drum	1	P50-320-45
42	0.75" Drum	1	P50-320-52
43	0.5" Table insert	1	P50-310-43
44	1.5" Table insert	1	P50-310-44
45	1" Table insert	1	P50-310-45
46	0.75" Table insert	1	P50-310-46
47	2" Table insert	1	P50-310-47
48	2" (51mm) Sanding sleeve 80#	1	P50-320-39
49	1.5" (38mm) Sanding sleeve 80#	1	P50-320-49
50	0.5" (13mm) Sanding sleeve 80#	1	P50-320-51

**NOTE:** Please reference the Manufacturer's Part Number when calling for Replacement Parts.  
 For Parts under Warranty, the Serial Number of your machine is required.

## PARTS LIST - 50-310

**NOTE:** Please reference the Manufacturer's Part Number when calling for Replacement Parts.  
For Parts under Warranty, the Serial Number of your machine is required.

KEY NO.	DESCRIPTION	QTY.	PART NO.
51	0.75" (19mm) Sanding sleeve 80#	1	P50-320-50
52	1" (26mm) Sanding sleeve 80#	1	P50-320-47
53	Flat washer 8	1	P50-320-42
54	Nut M8	1	P50-320-43
55	Wrench	1	P50-320-58
56	Power cord with plug 3x18x1.8m	1	P50-310-56
57	Spring	1	P50-320-59
58	Shaft sleeve 1	1	P50-320-60
59	Left work table support	1	P50-310-59
60	Right work table support	1	P50-310-60
61	Belt work table cover plate	1	P50-310-61
62	Hex nut M8	2	P50-310-62
63	Hex screw M8x25	2	P50-310-63
64	Table locking knob	2	P50-310-64
65	Spring block	1	P50-310-65
66	Phillips screw, spring washer, flat washer assembly M5x8	2	P50-310-66
67	Fixed slider	1	P50-310-67
68	Screw M6x14	2	P50-310-68
69	Limiting plate	1	P50-310-69
70	Limiting plate locking knob	1	P50-310-70
71	Belt support	1	P50-310-71
72	Support cover plate	1	P50-310-72
73	Guide support	1	P50-310-73
74	Belt tension lever	1	P50-310-74
75	Driven shaft	1	P50-310-75
76	Drive drum	1	P50-310-76
77	Driven drum	1	P50-310-77
78	Belt adjusting knob	1	P50-310-78
79	Washer 13mm Ø	3	P50-310-79
80	Belt locking knob	1	P50-310-80
81	Bearing 6001-2RS	2	P50-310-81
82	External Circlip 12	1	P50-310-82
83	Bearing 6004-2RS	2	P50-310-83
84	Screw M5x35	5	P50-310-84
85	Non-metallic nut M5	5	P50-310-85
86	Big flat washer 5	2	P50-310-86
87	Screw M5x16	1	P50-310-87
88	Adjustable spring	1	P50-310-88
89	Tension spring	1	P50-310-89
90	Flat washer 5	2	P50-310-90
91	Rubber washer	1	P50-310-91
92	Phillips screw M5x8	2	P50-310-92
93	Belt	1	P50-310-93
94	Miter gauge bar	1	P50-310-94
95	Miter gauge	1	P50-310-95
96	Big flat washer 6	1	P50-310-96
97	Miter gauge knob M6x16	1	P50-310-97
98	Big flat washer 8	1	P50-310-98
99	External teeth lock washer 8	2	P50-310-99
100	Fuse Link - 5x20mm 10A Glass Fuse 250V	1	P50-320-61
101	Rectifier Bridge	1	P50-320-62

**50-310 OSCILLATING SPINDLE/BELT SANDER**