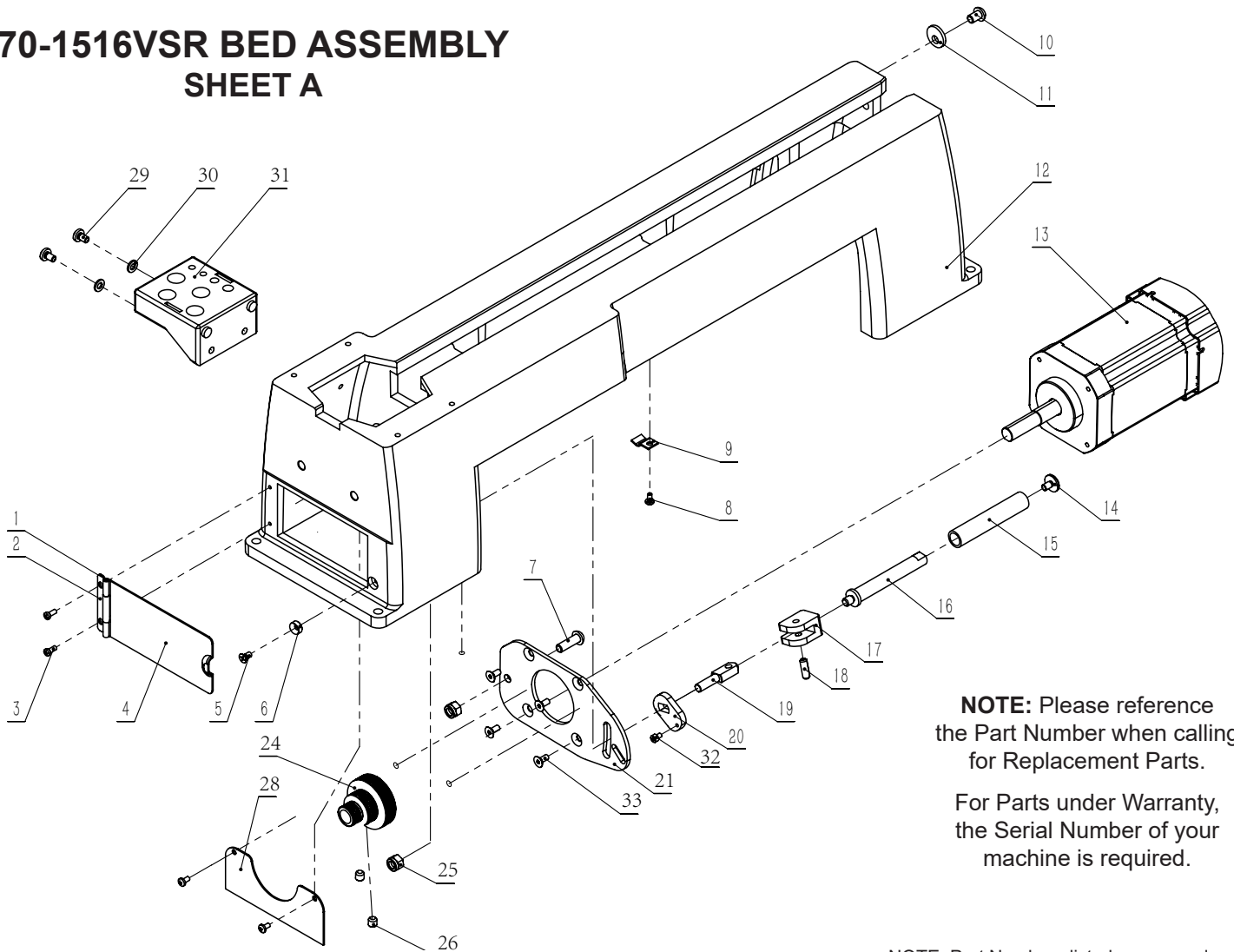


PARTS DIAGRAM & PARTS LIST

70-1516VSR BED ASSEMBLY SHEET A

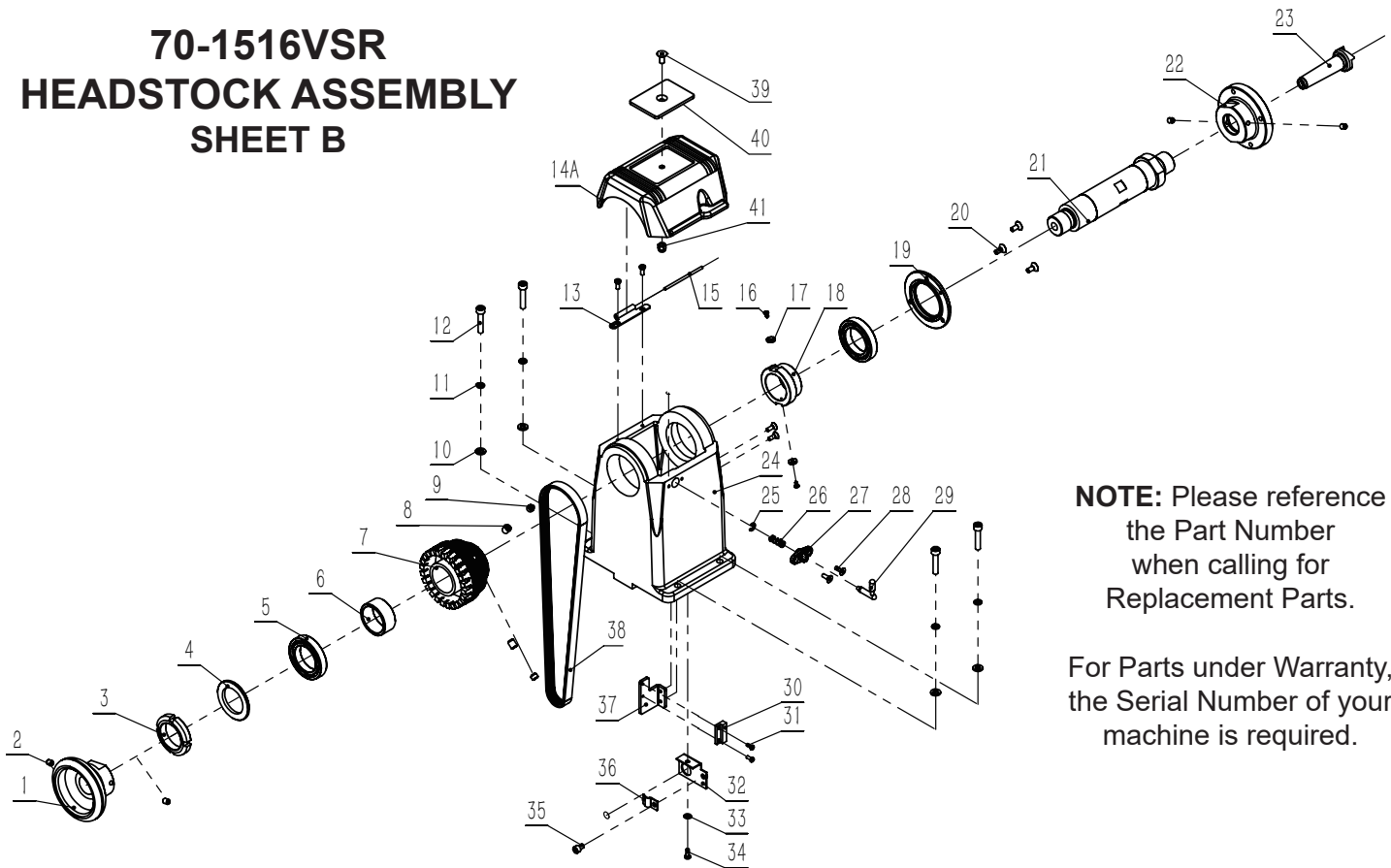


KEY NO.	DESCRIPTION	QTY	PART NO.
1	Hinge shaft	1	P70-150VSR-1A
2	Hinge	1	P70-150VSR-2A
3	Pan head screw M4x10	2	P70-150VSR-3A
4	Bed cover plate door	1	P70-150VSR-4A
5	Hex cntrsnk head screw M5x10	1	P70-1516VSR-5A
6	Magnet	1	P70-150VSR-6A
7A	Hex sockt flat hd screw M8x25	1	P70-150VSR-7AA
8	Pan head screw M4x8	3	P70-1516VSR-8A
9	Cable plate	1	P70-1516VSR-9A
10	Hex button head screw M8x12	1	P70-150VSR-10A
11	Eccentric washer	1	P70-150VSR-11A
12	Bed	1	P70-150VSR-12A
13	Motor DC	1	P70-1516VSR-13A
14	Thread cap	1	P70-150VSR-14A
15	Handle sleeve	1	P70-150VSR-15A

KEY NO.	DESCRIPTION	QTY	PART NO.
16	Tension handle	1	P70-150VSR-16A
17	Locking cam	1	P70-150VSR-17A
18	Elastic cylindrical pin	1	P70-150VSR-18A
19A	Locating shaft	1	P70-150VSR-19AA
20A	Tensioning plate	1	P70-150VSR-20AA
21	Motor connecting plate	1	P70-1516VSR-21A
24	Motor pulley	1	P70-150VSR-24A
25	Hex locking nut M8	2	P70-150VSR-25A
26	Set screw M8x8	2	P70-1516VSR-26A
28	Plate	1	P70-1516VSR-28A
29	Pan head screw M6x12	2	P70-150VSR-29A
30	Washer 6	2	P70-150VSR-30A
31	Tool holder	1	P70-150VSR-31A
32	Hex sockt hd cap scrw M4x5	1	P70-150VSR-32A
33	Hex cntrsnk hd screw M5x12	4	P70-1516VSR-33A

PARTS LIST & PARTS LIST

70-1516VSR HEADSTOCK ASSEMBLY SHEET B



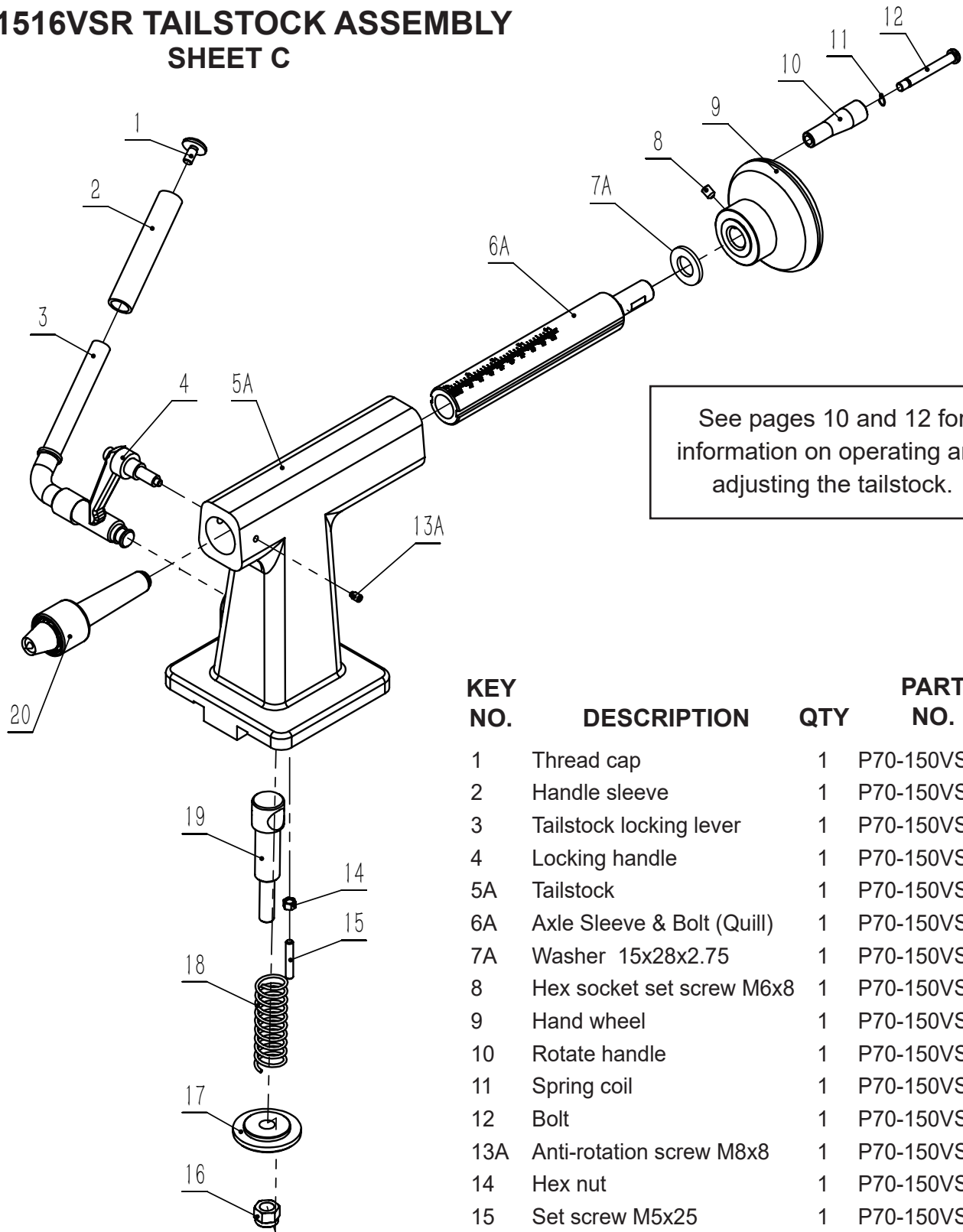
NOTE: Please reference the Part Number when calling for Replacement Parts.

For Parts under Warranty, the Serial Number of your machine is required.

KEY NO.	DESCRIPTION	QTY	PART NO.	KEY NO.	DESCRIPTION	QTY	PART NO.
1	Hand wheel	1	P70-150VSR-1B	22	3" faceplate	1	70-933
2	Set screw M6x8	4	P70-150VSR-2B	23	Spur center	1	70-943
3	Self-locking round nut	1	P70-150VSR-3B	24	Headstock	1	P70-150VSR-24B
4	Washer	1	P70-150VSR-4B	25	Split washer	1	P70-150VSR-25B
5	Ball bearing	2	P70-150VSR-5B	26	Spring	1	P70-150VSR-26B
6	Spacer bush	1	P70-150VSR-6B	27	Locating sleeve	1	P70-150VSR-27B
7	Spindle pulley	1	P70-150VSR-7B	28	Hex cntrsnk hd screw M4x12	4	P70-150VSR-28B
8	Set screw M8x10	2	P70-150VSR-8B	29	Locating pin assembly	1	P70-150VSR-29B
9	Set screw M8x6	2	P70-150VSR-9B	30	Speed measuring head	1	P70-150VSR-30B
10	Washer	4	P70-150VSR-10B	31	Pan head screw M3x8	2	P70-150VSR-31B
11	Spring washer	4	P70-150VSR-11B	32	Threading plate	1	P70-150VSR-32B
12	Hex socket cap screw M6x30	4	P70-150VSR-12B	33	Washer	1	P70-150VSR-33B
13	Hinge	1	P70-150VSR-13B	34	Pan head screw M4x10	3	P70-150VSR-34B
14A	Headstock cover	1	P70-150VSR-14BA	35	Hex socket cap screw M5x8	1	P70-150VSR-35B
15	Hinge shaft	1	P70-150VSR-15B	36	Cable plate	1	P70-150VSR-36B
16	Tapping screw	2	P70-150VSR-16B	37	Support bracket	1	P70-150VSR-37B
17	Magnet	2	P70-150VSR-17B	38	Poly-v-belt	1	P70-150VSR-38B
18	Magnetic steel sleeve	1	P70-150VSR-18B	39	Hex cntrsnk hd screw M5x12	1	P70-150VSR-39B
19	Bearing end plate	1	P70-150VSR-19B	40	Metal plate	1	P70-150VSR-40B
20	Hex cntrsnk hd screw M5x12	3	P70-150VSR-20B	41	Self locking nut M5	1	P70-150VSR-41B
21	Spindle	1	P70-150VSR-21B				

PARTS DIAGRAM & PARTS LIST

70-1516VSR TAILSTOCK ASSEMBLY SHEET C



See pages 10 and 12 for information on operating and adjusting the tailstock.

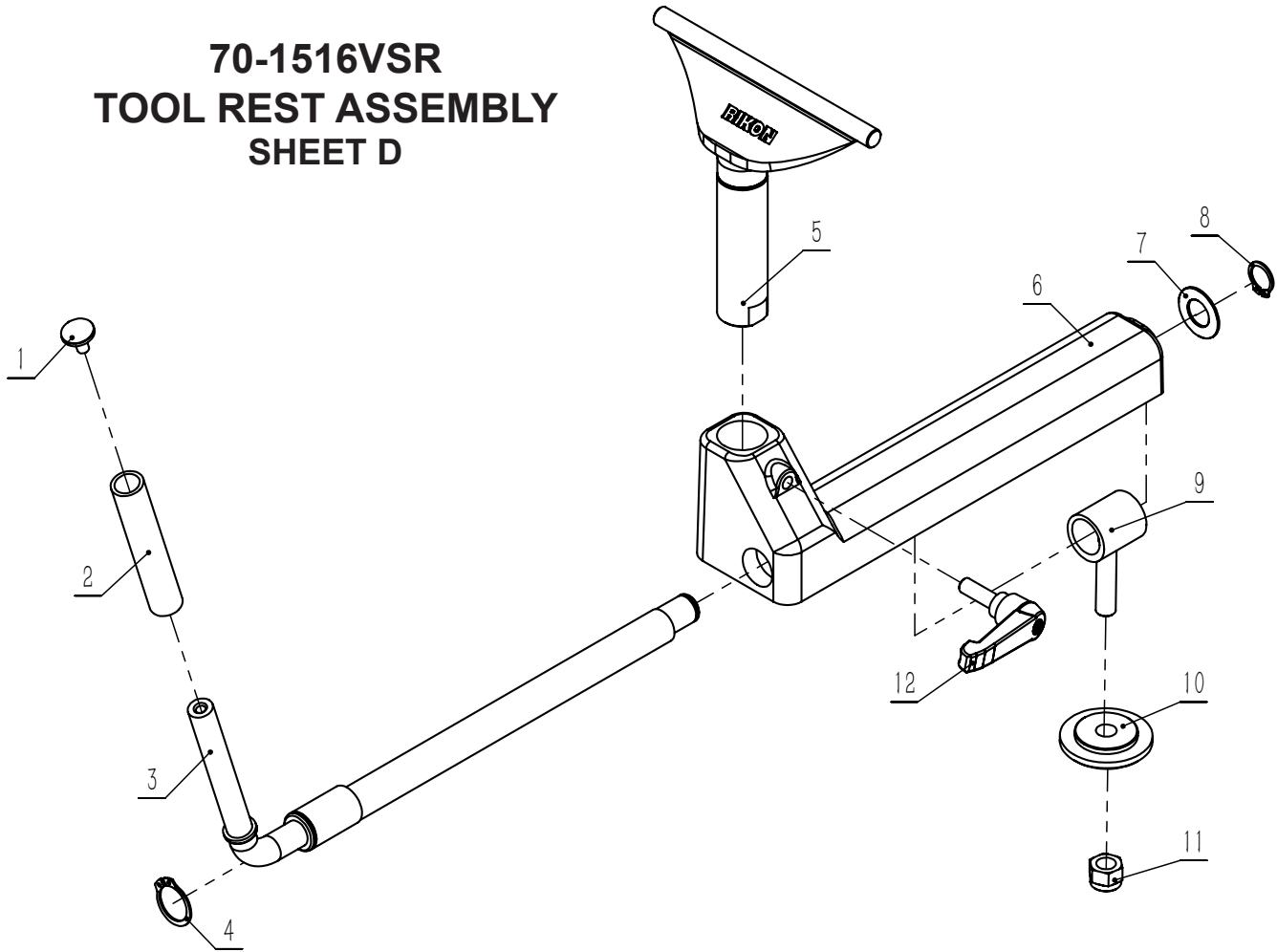
KEY NO.	DESCRIPTION	QTY	PART NO.
1	Thread cap	1	P70-150VSR-1C
2	Handle sleeve	1	P70-150VSR-2C
3	Tailstock locking lever	1	P70-150VSR-3C
4	Locking handle	1	P70-150VSR-4C
5A	Tailstock	1	P70-150VSR-5CA
6A	Axle Sleeve & Bolt (Quill)	1	P70-150VSR-6CA
7A	Washer 15x28x2.75	1	P70-150VSR-7CA
8	Hex socket set screw M6x8	1	P70-150VSR-8C
9	Hand wheel	1	P70-150VSR-9C
10	Rotate handle	1	P70-150VSR-10C
11	Spring coil	1	P70-150VSR-11C
12	Bolt	1	P70-150VSR-12C
13A	Anti-rotation screw M8x8	1	P70-150VSR-13CA
14	Hex nut	1	P70-150VSR-14C
15	Set screw M5x25	1	P70-150VSR-15C
16	Locking nut	1	P70-150VSR-16C
17	Clamping plate	1	P70-150VSR-17C
18	Compression spring	1	P70-150VSR-18C
19	Threaded shaft	1	P70-150VSR-19C
20	Live center	1	70-945

NOTE: Please reference the Part Number when calling for Replacement Parts.

For Parts under Warranty, the Serial Number of your machine is required.

PARTS DIAGRAMS & PARTS LISTS

70-1516VSR TOOL REST ASSEMBLY SHEET D



NOTE: Please reference the Part Number when calling for Replacement Parts.

For Parts under Warranty, the Serial Number of your machine is required.

KEY NO.	DESCRIPTION	QTY	PART NO.
1	Threaded cap end	1	P70-150VSR-1D
2	Handle sleeve	1	P70-150VSR-2D
3	Eccentric handle	1	P70-150VSR-3D
4	Circlip	1	P70-150VSR-4D
5	Tool rest (parts listed below)	-	-
	6" PRO tool rest TOP	1	70-976
	Steel compression washer	1	70-970
	Tool rest Post 1" dia. x 85mm	1	70-969
6	Tool rest base	1	P70-150VSR-6D
7	Thrust bearing washer	1	P70-150VSR-7D
8	Circlip	1	P70-150VSR-8D
9	Threaded shaft & sleeve	1	P70-150VSR-9D
10	Clamping plate	1	P70-150VSR-10D
11	Hex locking nut	1	P70-150VSR-11D
12	Locking handle	1	P70-150VSR-12D

TOOLS NOT SHOWN BUT LISTED ON PAGE 7

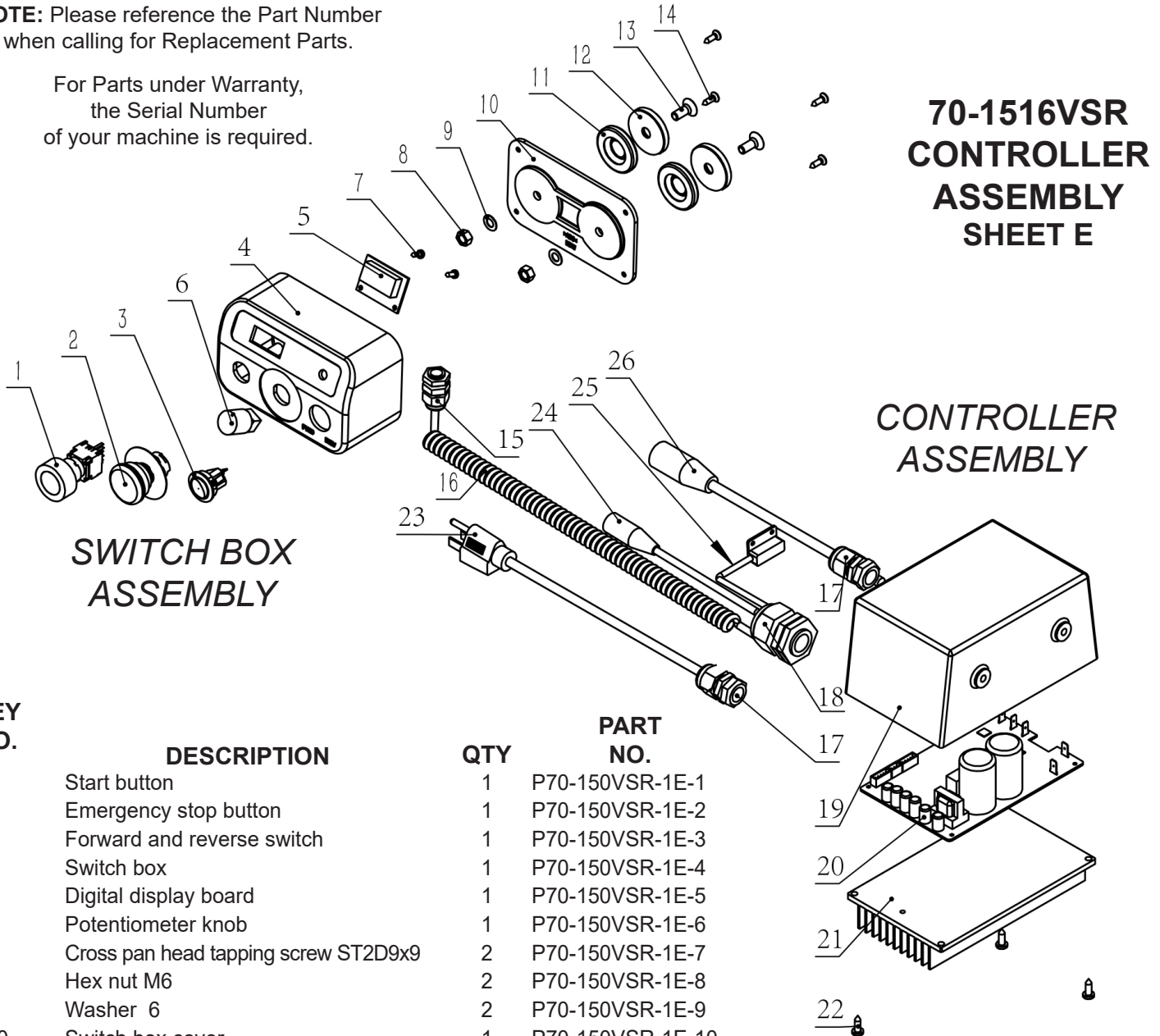
Hex Wrench - 2.5mm	P-HEX2.5
Hex Wrench - 3mm	P-HEX3
Hex Wrench - 4mm	P-HEX4
Hex Wrench - 5mm	P-HEX5
Wrench - 38mm	70-931
Wrench - 46mm	70-932
Spanner Wrench 35mm	P-SP WRENCH
Knockout Bar - Long	P70-150VSR-32A
Knob end for long K/O bar	P70-150VSR-33A
Knockout Bar - Small	P70-150VSR-34A

PARTS DIAGRAMS & PARTS LISTS

NOTE: Please reference the Part Number when calling for Replacement Parts.

For Parts under Warranty, the Serial Number of your machine is required.

70-1516VSR CONTROLLER ASSEMBLY SHEET E



**SWITCH BOX
ASSEMBLY**

**CONTROLLER
ASSEMBLY**

KEY NO.	DESCRIPTION	QTY	PART NO.
1	Start button	1	P70-150VSR-1E-1
2	Emergency stop button	1	P70-150VSR-1E-2
3	Forward and reverse switch	1	P70-150VSR-1E-3
4	Switch box	1	P70-150VSR-1E-4
5	Digital display board	1	P70-150VSR-1E-5
6	Potentiometer knob	1	P70-150VSR-1E-6
7	Cross pan head tapping screw ST2D9x9	2	P70-150VSR-1E-7
8	Hex nut M6	2	P70-150VSR-1E-8
9	Washer 6	2	P70-150VSR-1E-9
10	Switch box cover	1	P70-150VSR-1E-10
11	Magnet steel sleeve	2	P70-150VSR-1E-11
12	Magnet steel	2	P70-150VSR-1E-12
13	Hex socket countersink head screw M6x16	2	P70-150VSR-1E-13
14	Cross cntrsk head tapping screw ST3D5x13	4	P70-150VSR-1E-14
15	Cable strain relief M12	1	P70-150VSR-1E-15
16	Spring cable to switch box	1	P70-1516VSR-1E-16
17	Cable strain relief M16	2	P70-150VSR-1E-17
18	Cable strain relief M20x1.5	1	P70-150VSR-1E-18
19	Controller Assembly cover	1	P70-1516VSR-1E-19
20	Controller circuit board	1	P70-1516VSR-1E-20
21	Controller board base	1	P70-1516VSR-1E-21
22	Cross cntrsk head tapping screw ST4D2x13	4	P70-1516VSR-1E-22
23	Power cable with plug	1	P70-1516VSR-1E-23
24	Thick wire to motor with wire connector	1	P70-1516VSR-1E-24
25	Thin wire to RPM reader w/ wire connector	1	P70-1516VSR-1E-25
26	Motor cable with wire connector	1	P70-1516VSR-1E-26

Complete Controller Assembly (#1 to 26)
P70-1516VSR-1EA

Controller Box Assembly (#19 to 22)
P70-1516VSR-1E-CBA

See page 24 for the 70-1516VSR
Wiring Diagram, page 16 for
electronic trouble shooting codes
and page 5 for additional electrical
information.