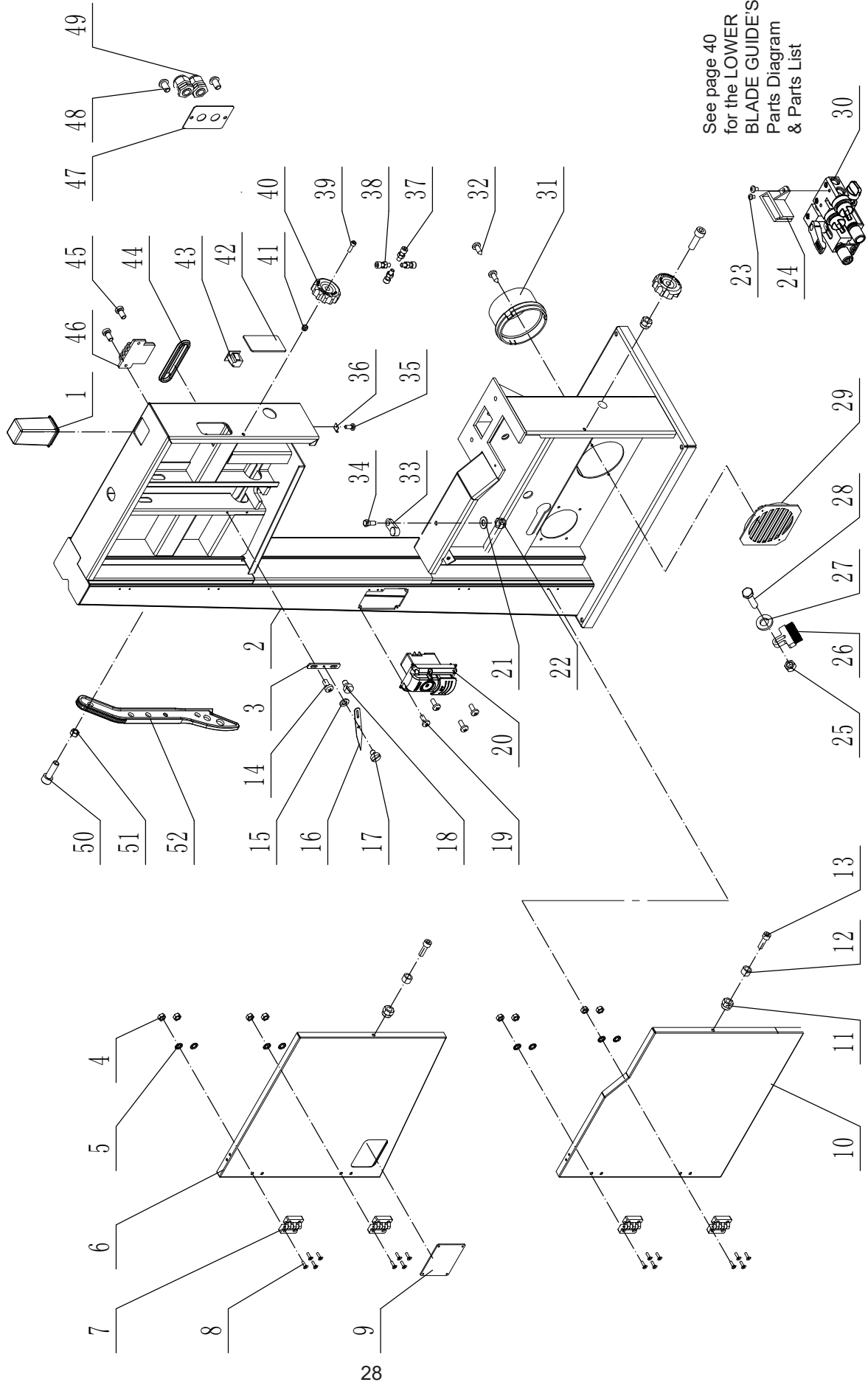


PARTS DIAGRAM

FRAME ASSEMBLY SHEET A

NOTE: Please reference the Manufacturer's Part Number when calling for Replacement Parts. For Parts under Warranty, the Serial Number of your machine is required.

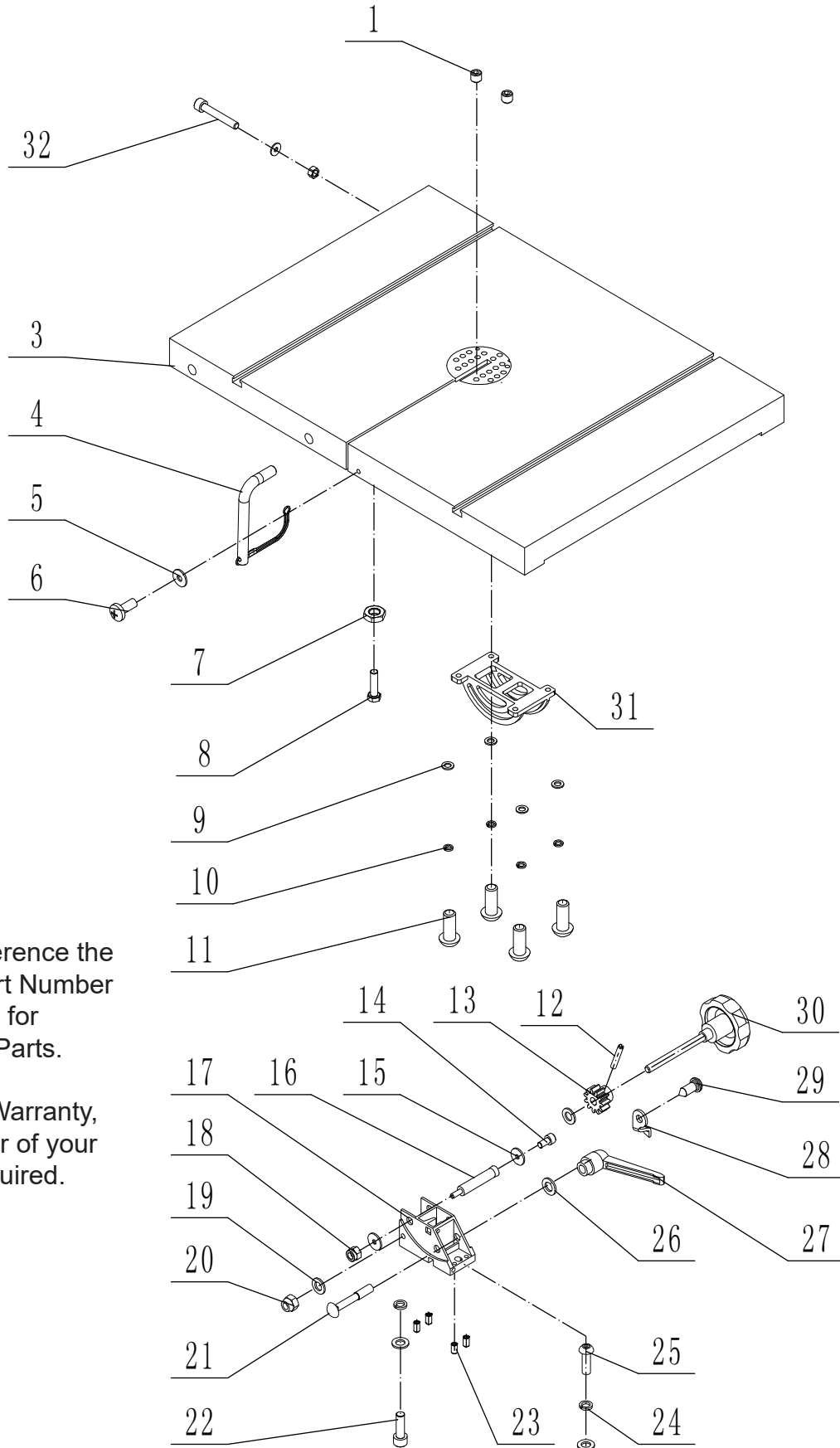


PARTS LIST

KEY NO.	DESCRIPTION	QTY.	PART NO.	KEY NO.	DESCRIPTION	QTY.	PART NO.
1A	Guide post cap	1	1-JL28010003-001S	27A	Washer	1	1-WSH6GB96D1B
2A	Frame	1	1-JMBS1404011000-117U	28A	Hex bolt M6x25	1	1-M6X25GB5783B
3A	Indicator adjustment plate	1	1-JL27010005	29A	Dust port grille	1	1-JL20010019-001S
4A	Hex nut M6	8	1-M4GB6170B	30A	Lower guide assembly	1	1-JMBS1404014000
5A	Lock washer	8	1-WSH4GB862D2B	31A	Dust port 4"	1	1-JL20010007-001S
6A	Upper wheel cover	1	1-JMBS1404010200-076U	32A	Tapping screw	2	1-ST3D5X9D5GB845B
7A	Hinge	4	1-JMBS1404010400	33A	Table angle block assembly	1	1-JL21010014
8A	Hex socket screw M4x16	16	1-M4X16GB70D3B	34A	Quick stop bolt	1	1-JL26010015
9A	Clear window	1	1-JXBS1804010004A	35A	Pan head screw M4x10	1	1-M4X10GB818B
10A	Lower wheel cover	1	1-JMBS1404010002-076U	36A	Pointer	1	1-JMBS1403011026-076U
11A	Nylon nut M6-1.0	2	1-M6GB889D1B	37A	Carriage bolt M8x25	4	1-M8X25GB5783B
12A	Bushing	2	1-JL26010007	38A	Hex nut M6	4	1-M8GB6170B
13A	Carriage bolt M6x20	2	1-M6X20GB70D1B	39A	Carriage bolt M6x20	2	1-M6X20GB70D1B
14A	Screw M5x10	1	1-M5X10GB818B	40A	Star knob	2	1-JL26010006-001S
15A	Washer	1	1-WSH5GB97D1B1-	41A	Nylon nut M6-1.0	2	1-M6GB889D1B
16A	Pointer	1	JL27010004-114X	42A	Clear window	1	1-JMBS1404010001
17A	Special screw	1	1-JL26010010	43A	Plug seat	1	1-DB-F-M
18A	Fixed bolt	1	1-JL27010019	44A	Rubber cover	1	1-JL28010005-001S
19A	Pan head screw M4x10	4	1-M4X10GB823B	45A	Pan head screw M5x10	2	1-M5X10GB818B
20A	ON/OFF Switch	1	1-HY56-6	46A	Tool holder	1	1-JL26090001
21A	Washer	1	1-WSH8GB97D1B	47A	Strain relief plate	1	1-JL26010011-117U
22A	Nylon nut M8	1	1-M8GB889D1ZF	48A	Hex socket screw M6x10	2	1-M6X10GB70D2B
23A	Pan head screw M4x6	2	1-M4X6GB818B	49A	Strain relief	2	1-JL91046100
24A	Lower blade guard	1	1-JMBS1404010004A	50A	Hex bolt M6X30	1	1-M6X30GB70D1B
25A	Nylon nut M6-1.0	1	1-M6GB889D1B	51A	Hex nut M6	1	1-M6GB6170B
26A	Brush	1	1-JL26010003	52A	Push stick	1	1-JL81100003-146S

PARTS DIAGRAM

TABLE ASSEMBLY SHEET B



NOTE: Please reference the Manufacturer's Part Number when calling for Replacement Parts.

For Parts under Warranty, the Serial Number of your machine is required.

PARTS LIST

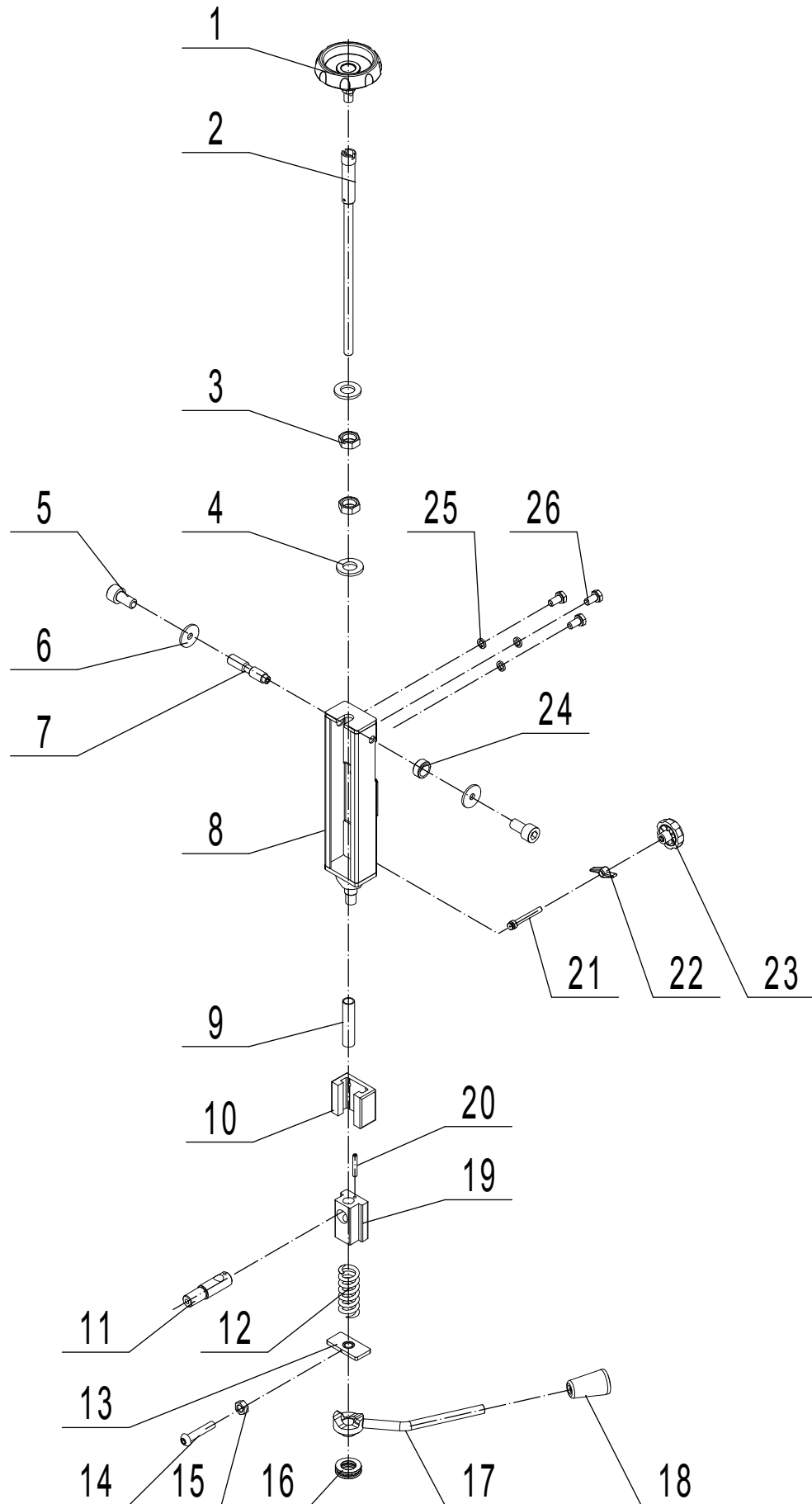
TABLE ASSEMBLY SHEET B

KEY NO.	DESCRIPTION	QTY.	PART NO.
1B	Set screw M6x4	2	1-M6X4GB77B
2B	Table insert	1	1-JL26050008A-001S
3B	Table	1	1-JMBS1404030100A-001G
4B	Table alignment pin & lanyard	1	1-JMBS1404030002
5B	Washer	1	1-WSH4GB96D1B
6B	Pan head screw M4x10	1	1-M4X10GB818B
7B	Hex nut M8	2	1-M8GB6170B
8B	Hex bolt M8x25	1	1-M8X25GB5783B
9B	Washer	5	1-WSH8GB97D1B
10B	Spring washer	4	1-WSH8GB93B
11B	Hex socket screw M8x20	4	1-M8X20GB70D2B
12B	Roll pin 3x18	1	1-PIN3X18GB879B
13B	Gear	1	1-JL28070003
14B	Hex socket cap screw M6x12	2	1-M6X12GB70D1Z
15B	Washer	2	1-WSH6GB5287Z
16B	Guide shaft	1	1-JL28070008B
17B	Support	1	1-JL27050004C
18B	Self-locking nut	1	1-M6GB889D1Z
19B	Washer	4	1-WSH8GB97D1B
20B	Self-locking nut M8	1	1-M8GB889D1ZF
21B	Square neck bolt M12x80	1	1-M12X80GB801Z
22B	Hex bolt M8x25	1	1-M8X25GB70D1B
23B	Hex screw	4	1-M6X12GB77Z
24B	Spring washer	2	1-WSH8GB93B
25B	Hex bolt M8x25	1	1-M8X25GB70D2BJ
26B	Washer	1	1-WSH12GB97D1Z
27B	Lock handle	1	1-KTSB-1-A-M12X95
28B	Indicator	1	1-JL26050005A
29B	Tapping screw	1	1-ST2D9X6D5GB845B
30B	Table tilting knob	1	1-JL26050006-001S
31B	Lower table trunnion	1	1-JL27050002A
32B	Hex bolt M8x80	1	1-M8X80GB70B

NOTE: Please reference the Manufacturer's Part Number when calling for Replacement Parts.
For Parts under Warranty, the Serial Number of your machine is required.

PARTS DIAGRAM

BLADE TENSION & TRACKING ASSEMBLY SHEET C



PARTS LIST

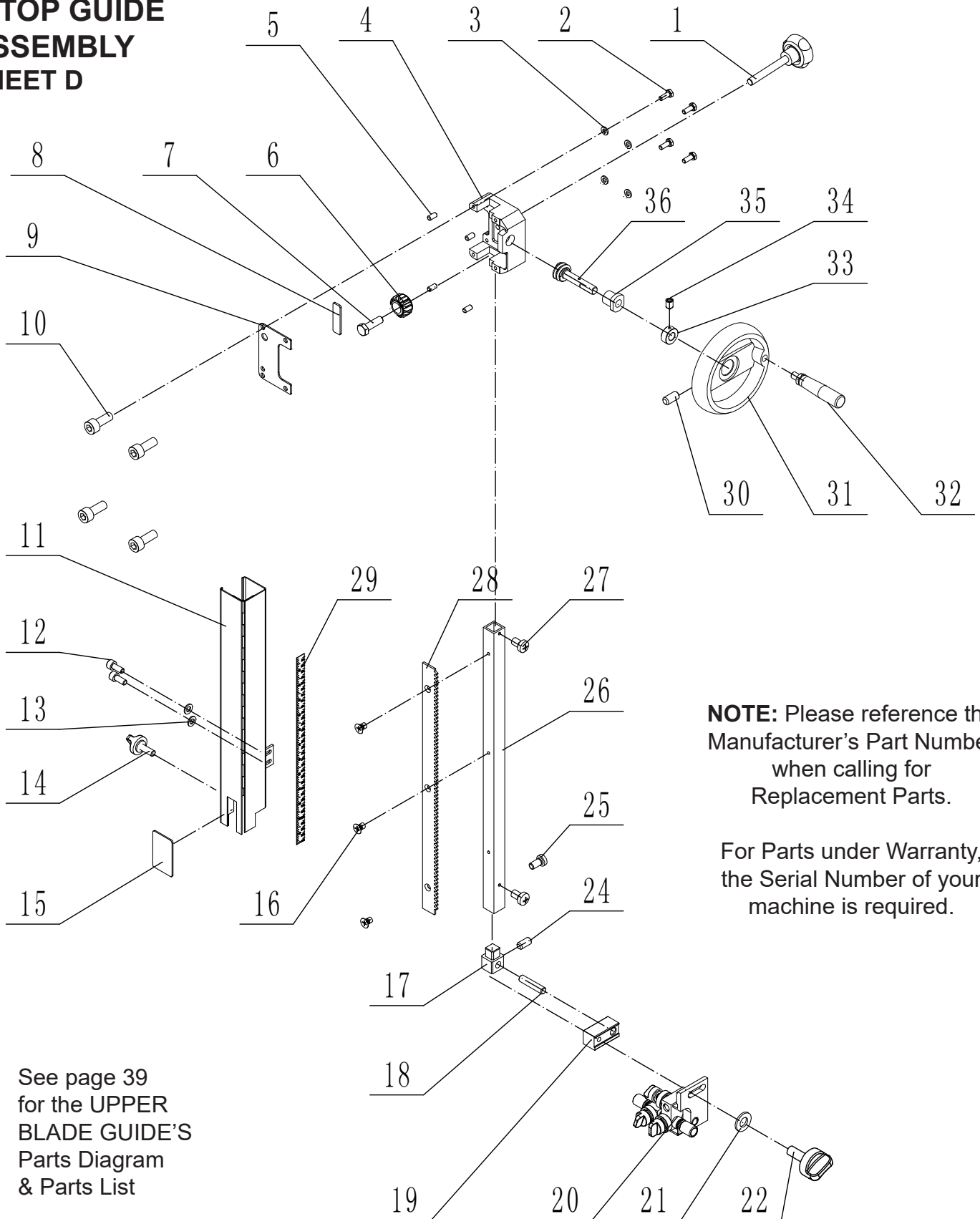
BLADE TENSION & TRACKING ASSEMBLY - SHEET C

KEY NO.	DESCRIPTION	QTY.	PART NO.
1C	Blade tension handwheel	1	1-JL21025000A001S
2C	Blade tension rod	1	1-JL28032000A
3C	Special hex nut	2	1-JL28030003
4C	Washer	2	1-WSH12GB97D1Z
5C	Hex socket screw M6x12	2	1-M6X12GB70D1Z
6C	Washer	2	1-WSH6GB5287Z
7C	Upper shaft	1	1-JL28030008
8C	Slide bracket	1	1-JL28031000
9C	Tube	1	1-JL28030001
10C	Sliding Rail	1	1-JL28030010
11C	Upper wheel shaft	1	1-JL28030004
12C	Spring	1	1-JL27030011A
13C	Block	1	1-JMBS1404040001
14C	Hex socket screw M3x16	1	1-M3X16GB70D2B
15C	Hex nut M6	1	1-M3GB6170B
16C	Thrust bearing	1	1-BRG51104GB301
17C	Quick release lever handle	1	1-JL28033000
18C	Quick release rod	1	1-1904011
19C	Upper wheel shaft hinge	1	1-JL28030007
20C	Roll pin 5x35	1	1-PIN5X35GB879D1B
21C	Quick stop bolt	1	1-JL28030005
22C	Wing nut	1	1-JL20010016A-001S
23C	Blade tracking handle	1	1-JL26040015A-001S
24C	Washer	1	1-JL28030009
25C	Spring washer	3	1-WSH6GB93B
26C	Hex Bolt	3	1-M6X12GB5783B

NOTE: Please reference the Manufacturer's Part Number when calling for Replacement Parts.
For Parts under Warranty, the Serial Number of your machine is required.

PARTS DIAGRAM

BLADE GUARD & TOP GUIDE ASSEMBLY SHEET D



NOTE: Please reference the Manufacturer's Part Number when calling for Replacement Parts.

For Parts under Warranty, the Serial Number of your machine is required.

See page 39 for the UPPER BLADE GUIDE'S Parts Diagram & Parts List

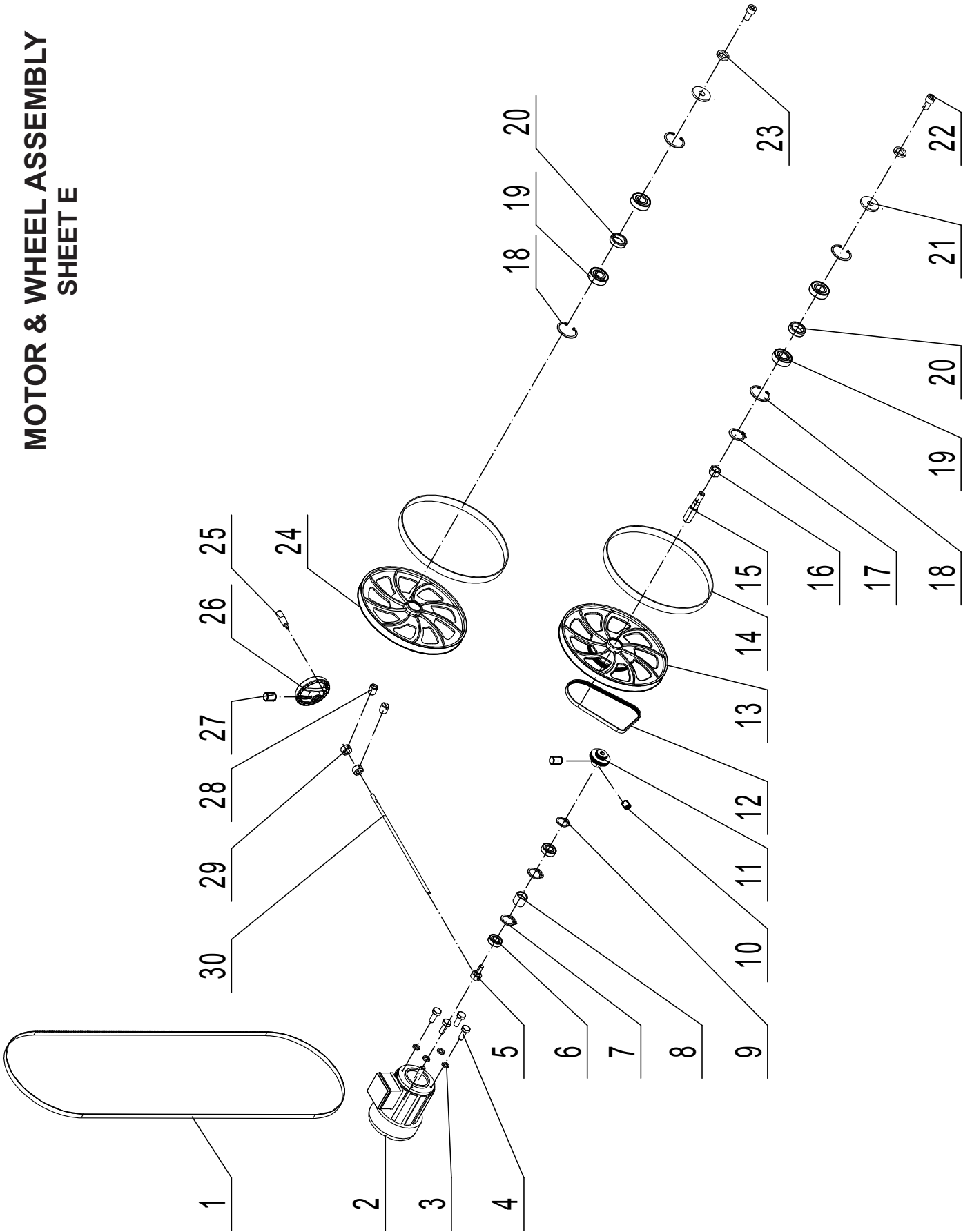
PARTS LIST

BLADE GUARD & TOP GUIDE ASSEMBLY - SHEET D

KEY NO.	DESCRIPTION	QTY.	PART NO.
1D	Locking handle	1	1-JL82240011-001S
2D	Hex bolt M6x16	4	1-M6X16GB5783B
3D	Washer	4	1-WSH6GB96B
4D	Guide bracket	1	1-JL27040006
5D	Set screw M6x12	4	1-M6X12GB77B
6D	Gear	1	1-1501006
7D	Fixed bolt	1	1-JL26040006
8D	Fixed plate	1	1-JL26040007
9D	Guide bracket cover	1	1-JL27040002A
10D	Hex socket screw M6x16	4	1-M6X16GB70Z
11D	Hinged door	1	1-JMBS1404050110A-114X
12D	Carriage bolt M5x12	2	1-M5X12GB70B
13D	Washer	2	1-WSH5GB97D1B
14D	Locking handle	1	1-JMBS1403050004-001S
15D	Clear window	1	1-JMBS1404050001
16D	Hex socket screw M5x8	3	1-M5X8GB819B
17D	Upper guide support block	1	1-JL28040005
18D	Adjustment bar	1	1-JL28040009
19D	Sliding bracket	1	1-JL28040011
20D	New upper guide assembly	1	1-JMBS1404052000
21D	Washer	1	1-JL46090009
22D	Locking knob	1	1-JMBS1403050003-001S
23D	Nylon lock nut M8	1	1-M8GB889D1ZF
24D	Set screw M6x10	2	1-M6X10GB77B
25D	Screw M5x25	1	1-M5X25GB70D1B
26D	Guide post	1	1-JL28040002A
27D	Pan head screw M5x8	2	1-M5X8GB818B
28D	Rack	1	1-JL28040001A
29D	Ruler	1	1-JMBS1401050003
30D	Set Screw M6x12	1	1-M6X12GB77B
31D	Crank handwheel	1	1-SGSL-D100-d10
32D	Handwheel handle	1	1-JL26020014B-001S
33D	Set collar	1	1-JL20010015
34D	Set screw M5x8	1	1-M5X8GB71B
35D	Bushing	1	1-JL27040003
36D	Worm cylinder	1	1-JL27040004

PARTS DIAGRAM

MOTOR & WHEEL ASSEMBLY SHEET E



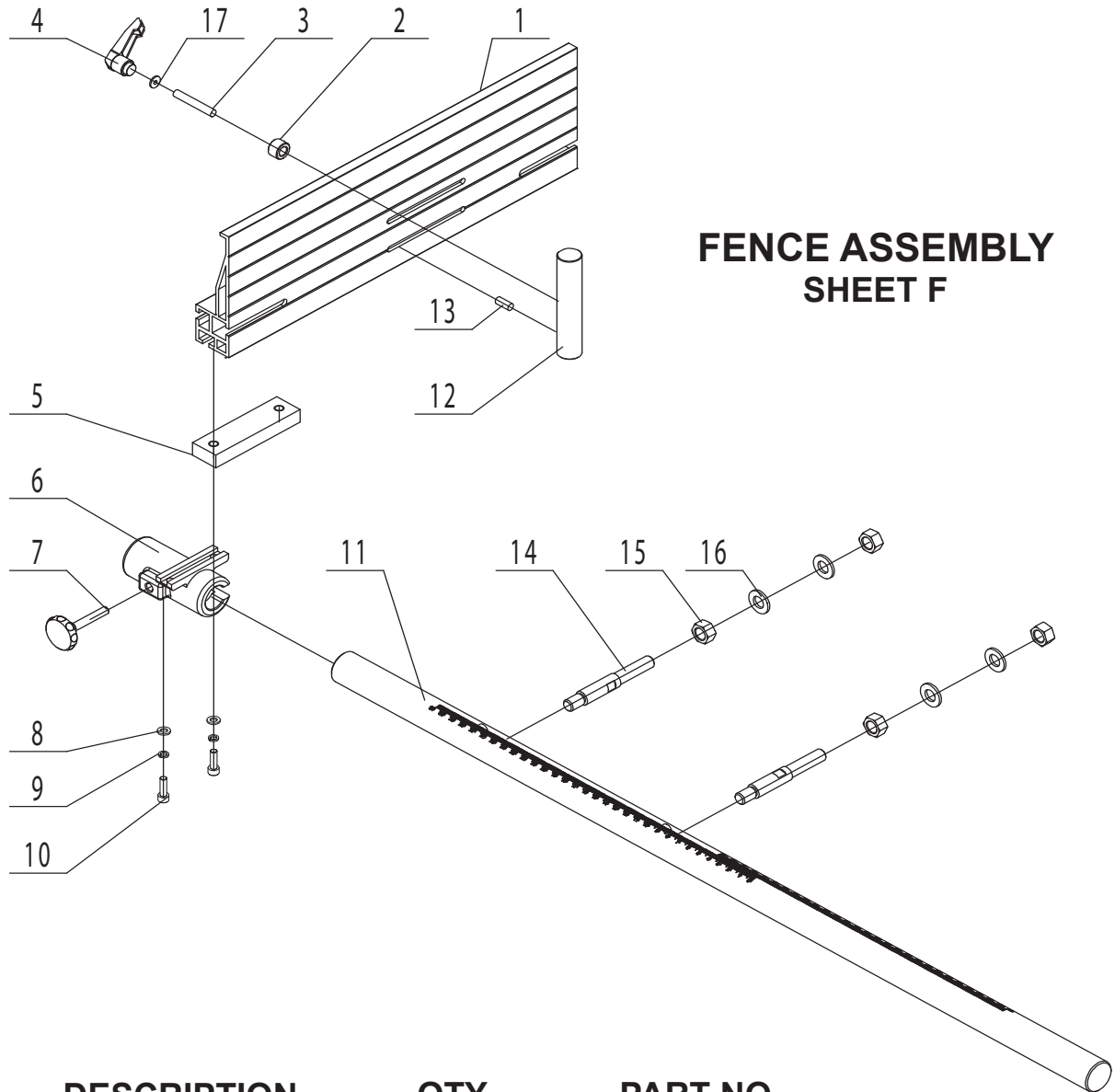
PARTS LIST

KEY NO.	DESCRIPTION	QTY.	PART NO.
1E	Bandsaw blade	1	1-JL28020001C
2E	Motor	1	2-YYH806114
3E	Spring washer	4	1-WSH6GB93B
4E	Hex bolt M6x20	4	1-M6X16GB5783B
5E	Sliding shaft	1	1-JL20014001
6E	Bearing	2	1-BRG6203-2RSGB276
7E	Retainer ring	2	1-CLP28GB893D1B
8E	Tension wheel	1	1-JL20014002
9E	Retaining spring	1	1-CLP12GB894D1B
10E	Hex socket screw M6x8	2	1-M6X8GB80B
11E	Motor pulley	1	1-JL20070001
12E	Multi-Vee belt	1	1-JL20020002
13E	Lower bandsaw wheel	1	1-JL21023002C
14E	Tire	2	1-JL21022002B
15E	Lower wheel shaft	1	1-JL28020002A
16E	Hex nut	1	1-JL20020004
17E	Retaining ring 17	1	1-CLP17GB894D1B
18E	Retaining ring 40	4	1-CLP40GB893D1B
19E	Bearing	4	1-BRG6203-2RSGB276
20E	Tube	2	1-JL28020004
21E	Washer	2	1-WSH8GB5287B
22E	Hex screw M8x16	2	1-M8X16GB70B
23E	Spring washer	2	1-WSH8GB93B
24E	Upper bandsaw wheel	1	1-JL21022001A
25E	Handwheel handle	1	1-JL26020014B-001S
26E	Crank handwheel	1	1-SGSL-D100-d10
27E	Set screw M8x35	1	1-M6X8GB77B
28E	Set screw M5x8	2	1-M5X8GB71Z
29E	Set collar	2	1-CLP10GB884Z
30E	Crank	1	1-JL28020003A

NOTE: Please reference the Manufacturer's Part Number when calling for Replacement Parts.

For Parts under Warranty, the Serial Number of your machine is required.

PARTS DIAGRAM & PARTS LIST



FENCE ASSEMBLY SHEET F

KEY NO.

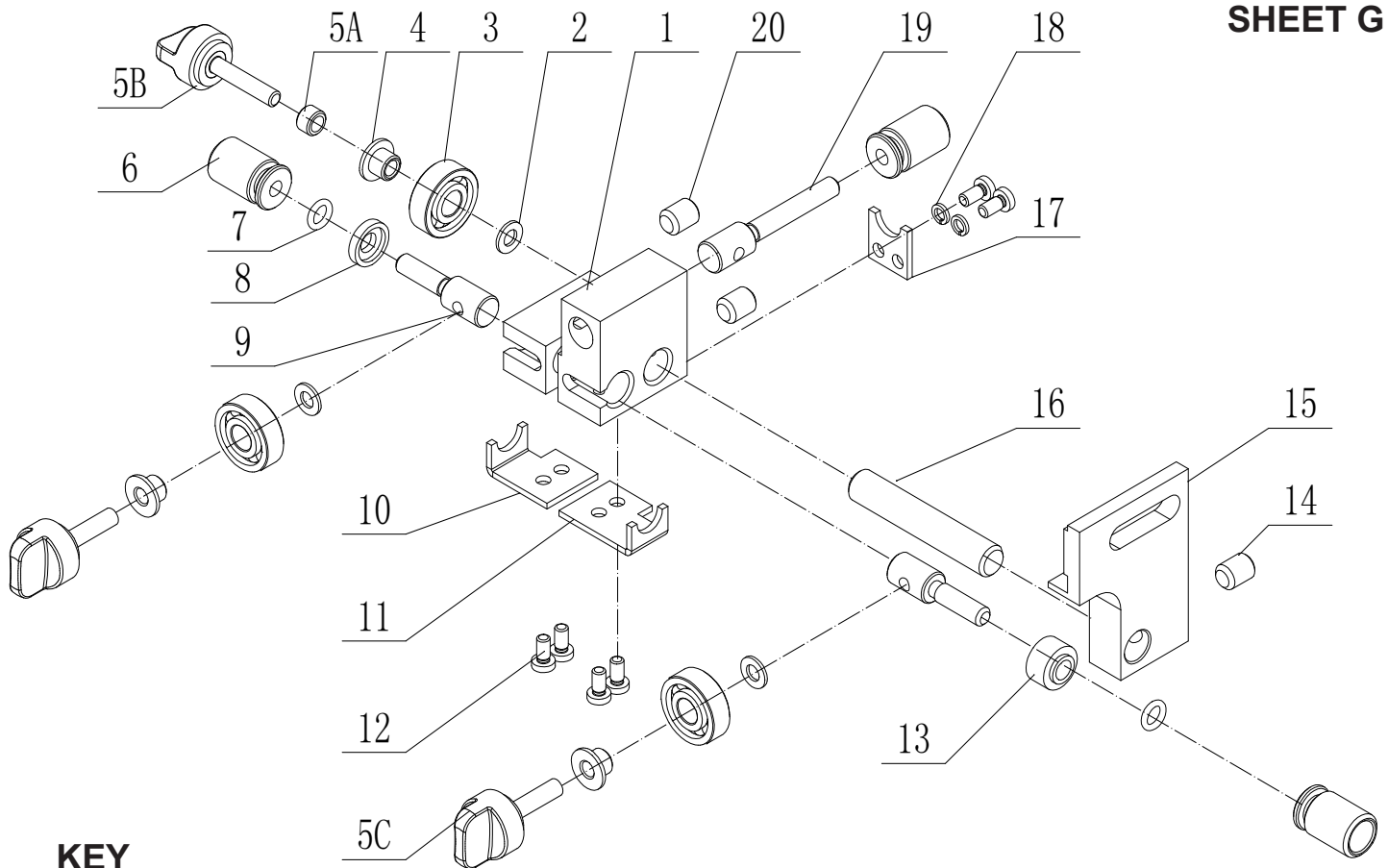
KEY NO.	DESCRIPTION	QTY.	PART NO.
1F	Fence	1	1-JMBS1404060001
2F	Tube	1	1-JL93010018
3F	Bolt	1	1-JMBS1403061002
4F	Lock handle	1	1-KTSB-1-A-M6X50
5F	Sliding block	1	1-JMBS1404060003
6F	Rip fence carrier	1	1-JMBS1601060003
7F	Locking handle knob	1	1-JL28060017
8F	Washer	2	1-WSH6GB97D1B
9F	Spring washer	2	1-WSH6GB93B
10F	Hex socket screw M6x25	2	1-M6X25GB70D1B
11F	Front guide rail	1	1-JMBS1404060004
12F	Re-saw bar	1	1-JMBS1403061001
13F	Screw	1	1-JL26061003
14F	Support shaft	2	1-JMBS1404060006
15F	Nut M8	4	1-M8GB6170Z
16F	Flat washer	4	1-WSH8GB97D1Z
17F	Flat washer	1	1-WSH6GB97D1B

NOTE: Please reference the Manufacturer's Part Number when calling for Replacement Parts.

For Parts under Warranty, the Serial Number of your machine is required.

PARTS DIAGRAM & PARTS LIST

UPPER BLADE GUARD ASSEMBLY SHEET G



KEY NO.

DESCRIPTION

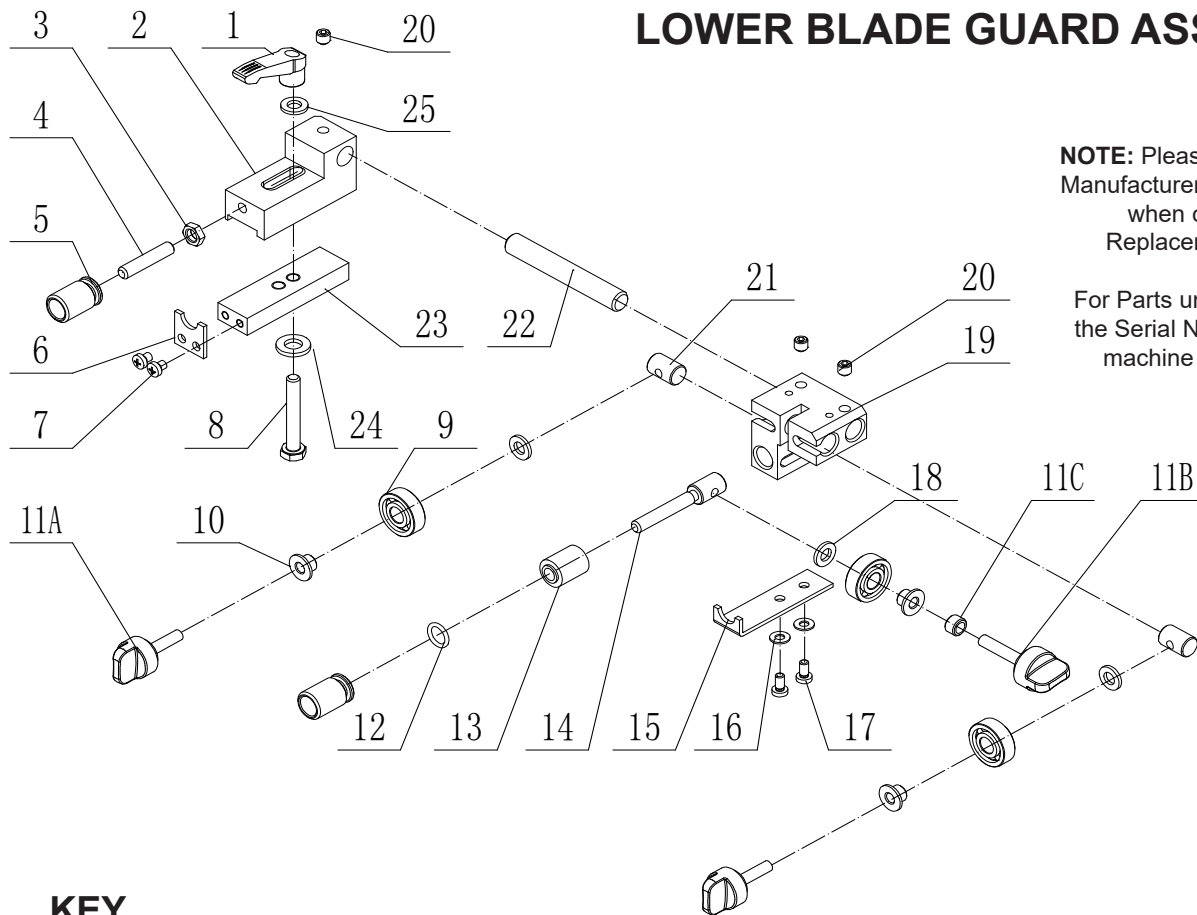
QTY.

PART NO.

1G	Upper guide	1	1-JL21042001C
2G	Washer	3	1-WSH5GB97D1Z
3G	Bearing	3	1-BRG608-2RSGB276
4G	Bearing bush	3	1-JL20042002
5AG	Sleeve	1	1-JL61020013
5BG	Locking handle	1	1-JMBS1001051008-001S
5CG	Locking handle	2	1-JMBS1001051007-001S
6G	Fine tuning knob	3	1-JL21042005
7G	Rubber seal	3	1-SLG9X1D8GB3452D1
8G	Short sleeve	2	1-JL21042010
9G	Long bolt	2	1-JL21042008
10G	Left positioning support plate	1	1-JL21042007
11G	Right positioning support plate	1	1-JL21042003
12G	Cross recessed pan head screw M4X8	6	1-M4X8GB823Z
13G	Long sleeve	1	1-JL21042009
14G	Hex socket set screw with flat end M8X10	1	1-M8X10GB77B
15G	Upper guide support	1	1-JL21042002
16G	Upper guide shaft	1	1-JL22042002
17G	Front and rear positioning support plate	1	1-JL21042004
18G	Spring washer	2	1-WSH4GB93B
19G	Long bolt	1	1-JL21043006
20G	Hex socket set screw M6X10	2	1-M6X10GB80B

PARTS DIAGRAM & PARTS LIST

LOWER BLADE GUARD ASSEMBLY SHEET H



NOTE: Please reference the Manufacturer's Part Number when calling for Replacement Parts.

For Parts under Warranty, the Serial Number of your machine is required.

KEY NO.

DESCRIPTION

QTY.

PART NO.

1H	Adjustable handle	1	1-KTSB-1-A-M6X50
2H	Lower guide support	1	1-JL21043001C
3H	Hex thin nut M6	1	1-M6GB6172D1Z
4H	Hex socket set screw with flat end M6X30	1	1-M6X30GB77B
5H	Fine tuning knob	2	1-JL21042005
6H	Front and rear positioning support plate	1	1-JL21043003
7H	Cross recessed pan head screw M4X5	2	1-M4X5GB823Z
8H	Hex bolt M6X40	1	1-M6X40GB5781Z
9H	Bearing	3	1-BRG608-2RSGB276
10H	Bearing bush	3	1-JL20042002
11AH	Locking handle	2	1-JMBS1001051007-001S
11BH	Locking handle	1	1-JMBS1001051008-001S
11CH	Sleeve	1	1-JL61020013
12H	Rubber seal	1	1-SLG9X1D8GB3452D1
13H	Long sleeve	1	1-JL21043007
14H	Long bolt	1	1-JL21043006
15H	Front and rear positioning support plate	1	1-JL21043002
16H	Washer	2	1-WSH4GB97D1Z
17H	Cross recessed pan head screw M4X5	2	1-M4X5GB823Z
18H	Washer	3	1-WSH5GB97D1Z
19H	Lower guide	1	1-JL21043004B
20H	Hex socket set screw M6X6	3	1-M6X6GB80B
21H	Rear adjusting spindle	2	1-JL22042004
22H	Lower guide shaft	1	1-JL22043002
23H	Base plate	1	1-JL21040001
24H	Washer	1	1-WSH6GB96D1Z
25H	Washer	1	1-WSH6GB97D1Z