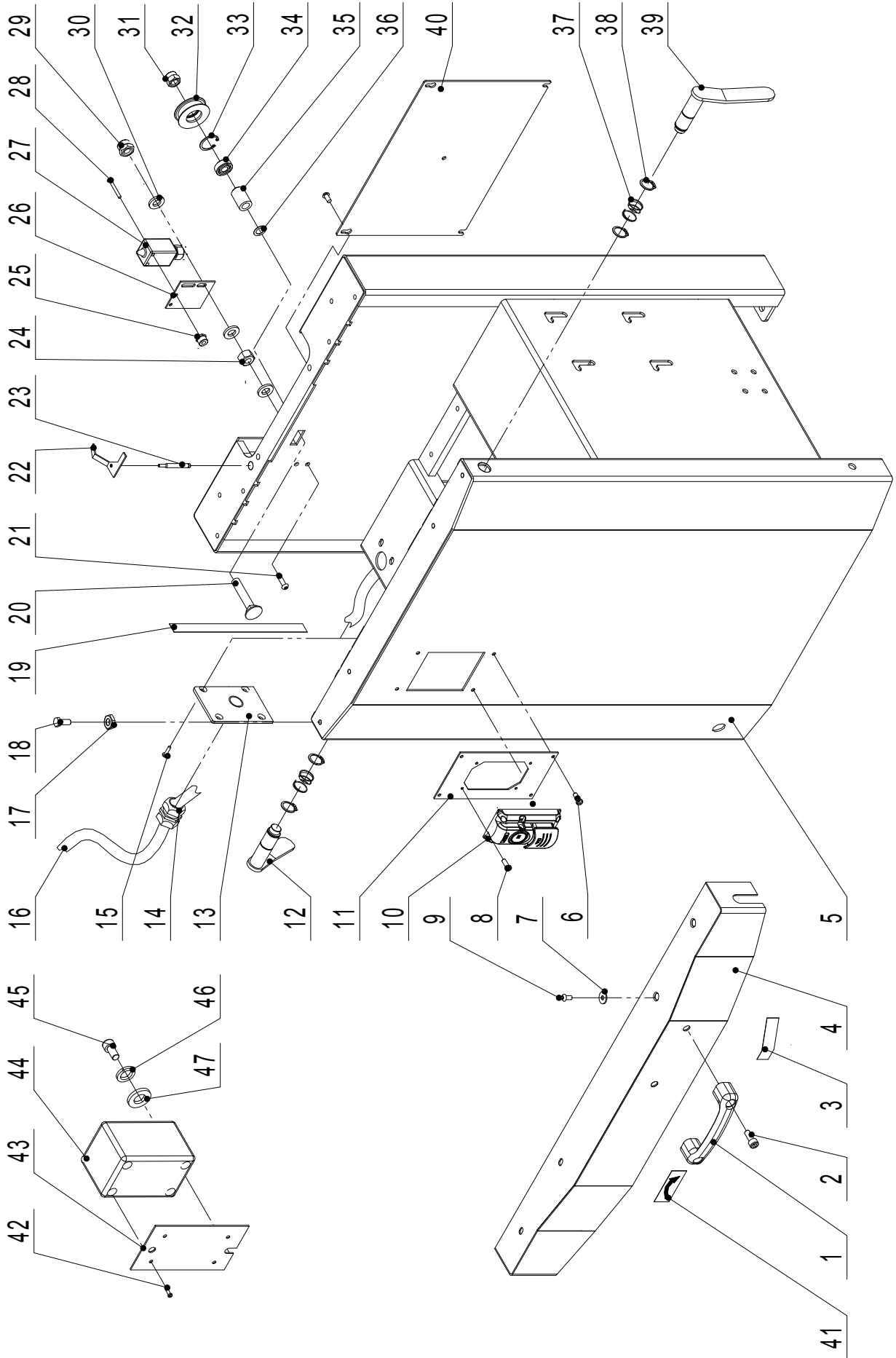


PARTS DIAGRAM

CABINET ASSEMBLY



NOTE: Please reference the Key Number when calling for Replacement Parts.
For Parts under Warranty, the Serial Number of your machine is required.

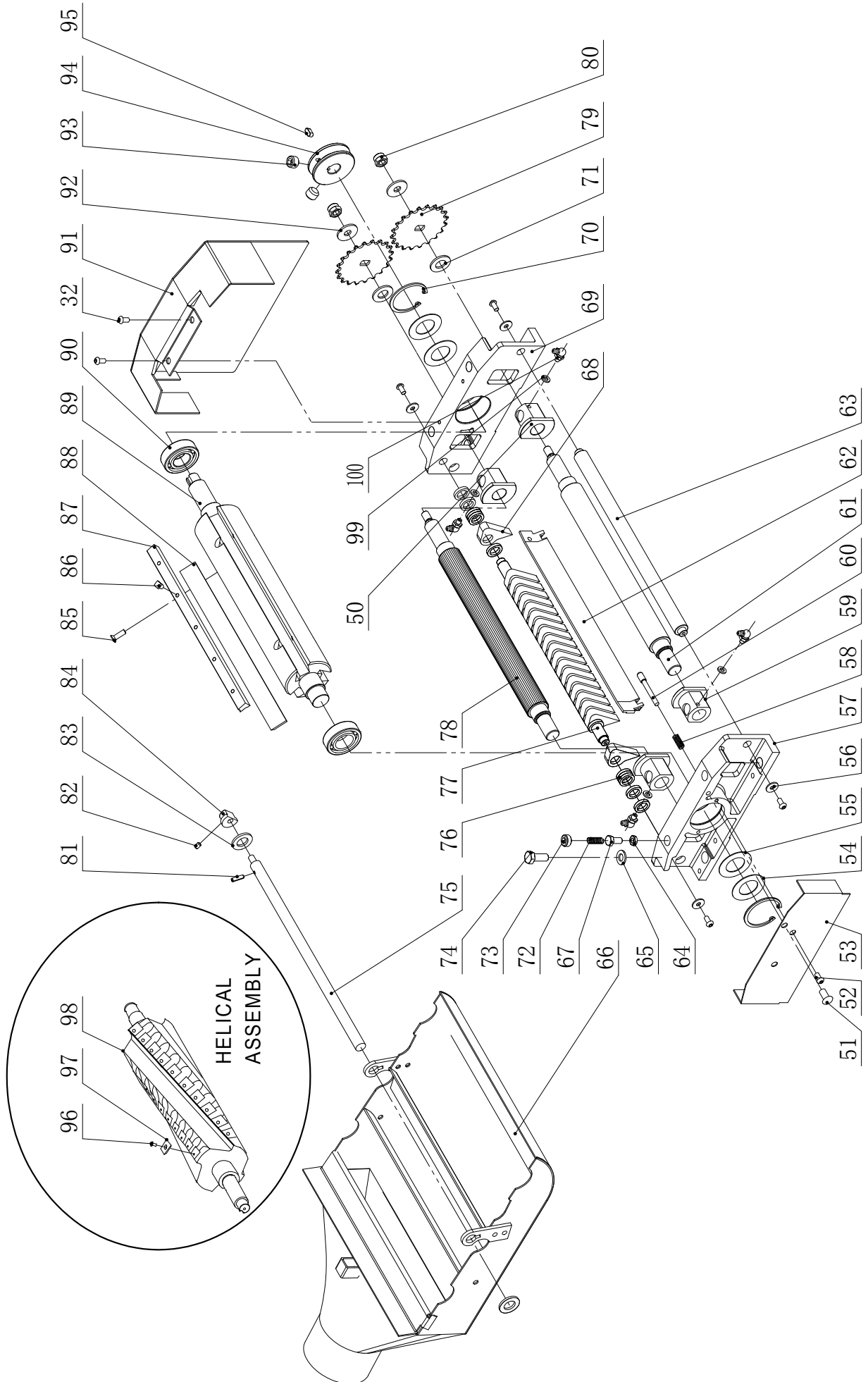
PARTS LIST

KEY NO.	DESCRIPTION	PART NO.	KEY NO.	DESCRIPTION	PART NO.
1	Handle	1-JL45030030A	25	Lock nut	1-M4GB889Z
2	Hex screw	1-M8X20GB70B	26	Switch plate	1-JL450900004
3	Label	1-JL45030031D	27	Micro switch	1-QKS7
4	Left cover	1-JL45032000B-117U	28	Pan screw	1-M4X30GB818Z
5	Frame	1-JL45010000C-076U	29	Lock nut	1-M6GB889Z
6	Pan screw	1-M4X6GB818Z	30	Flat washer	1-WSH6GB97D1Z
7	Screw	1-M6X12GB70D2B	31	Hex screw	1-M12GB889B
8	Pan Head Screw	1-M4X16GB818Z	32	Idle pulley	1-JL45052001
9	Big washer	1-WSH6GB96B	33	Ring	1-CLP28GB893D1B
10	On/off switch	1-HY57-11	34	Bearing	1-BRG6001-2ZGB276
11	Switch box	1-JL49090001-076U	35	Tube	1-JL45052002A
12	Handle	1-JL45030026	36	Adjust cushion	1-JL40020004
13	Plug board	1-JL45090006-076U	37	Handle spring	1-JL45030032
14	Pull off	1-JL91046100	38	Circlip	1-CLP20GB894D1B
15	Pan screw	1-M4X10GB818Z	39	Handle	1-JL45030014
16	Power cable	1-U13143500-608	40	Belt cover plate	1-JL45010004-076U
17	Nut	1-M8GB6172Z	41	Sticker	1-JL48020006A
18	Ball head bolt	1-JL45030016	42	Pan screw	1-M4X12GB818Z
19	Scale	1-JL45040019A	43	Relay seat plate	1-JL45090008
20	Square neck bolt	1-M12X65GB801Z	44	Relay assembly	1-JL48091100A
21	Hex screw	1-M6X25GB70D2B	45	Screw	1-M8X12GB70Z
22	Plate	1-JL45090003	46	Spring washer	1-WSH8GB93Z
23	Rod	1-JL45090005	47	Big washer	1-WSH8GB96Z
24	Nut	1-M6GB41Z			

CABINET ASSEMBLY

PARTS DIAGRAM

CUTTERHEAD ASSEMBLY



PARTS LIST

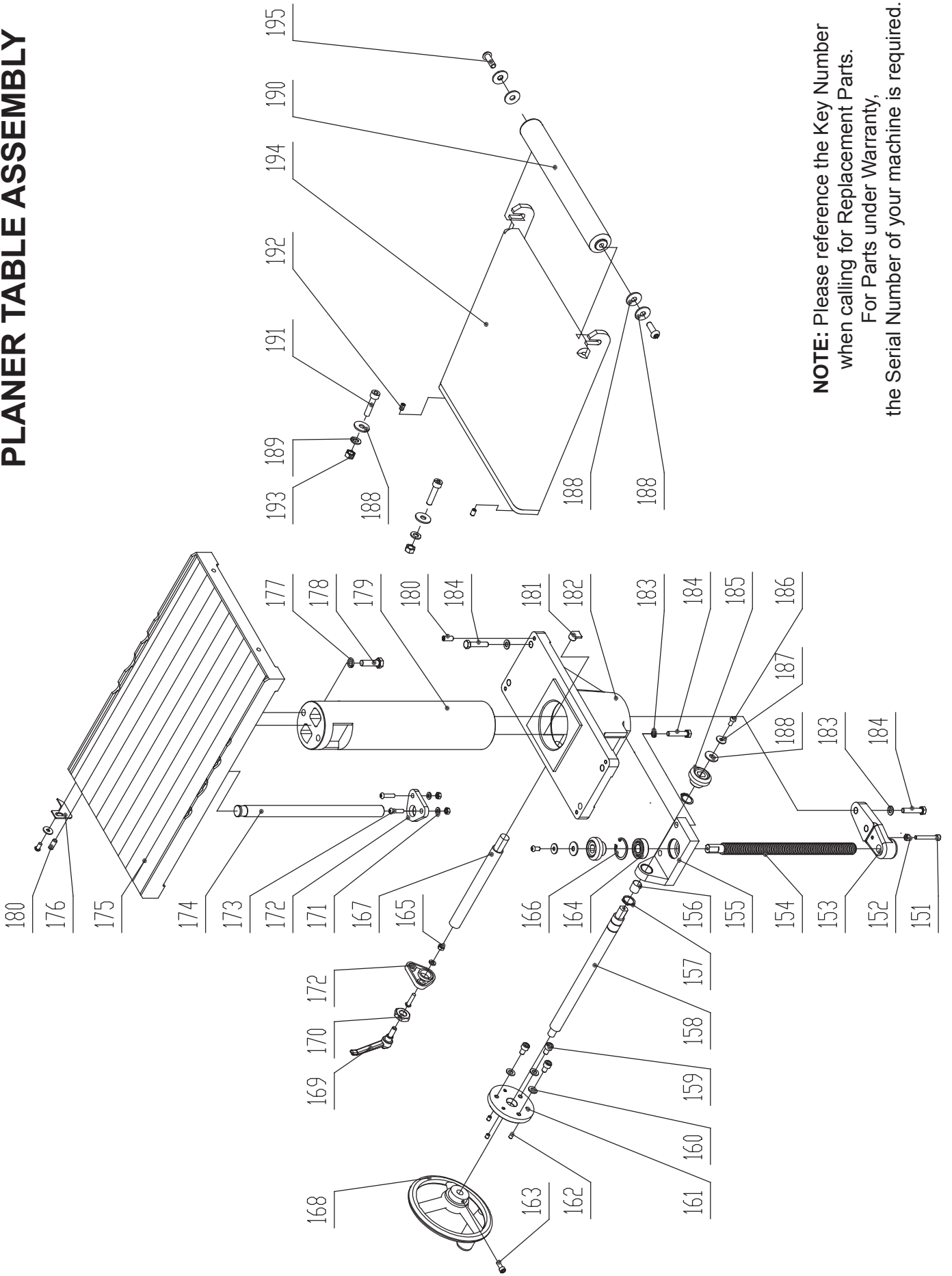
KEY NO.	DESCRIPTION	PART NO.	KEY NO.	DESCRIPTION	PART NO.
50	Left bronze bushing	1-JL45020006B	76	Bushing	1-JL45020011
51	Locating pin cover	1-JL45023002	77	Rod	1-JL45020008
52	Screw M6X12	1-M6X12GB70D2B	78	Infeed roller	1-JL45020005
53	Inner guide	1-JL45030023-117U	79	Big chain wheel	1-JL45050003
54	Wave washer	1-JL45020016	80	Hexagonal self-locking nut	1-M10GB889Z
55	Washer	1-JL45020017	81	Pin	1-PIN5X18GB879B
56	Big washer	1-WSH6GB96B	82	Set screw M6X8	1-M6X8GB77B
57	Left cutterhead bracket	1-JL45020002-001G	83	Flat Washer	1-WSH16GB97D1Z
58	Spring	1-JL41025102	84	Small eccentric wheel	1-JL45090002
59	Right bronze bushing	1-JL45020006A	85	Hex jacking screw M6X20	1-M6X20GB70D3B
60	Location pin	1-JL45023001	86	Square head screw	1-JL41010007
61	Outfeed roller	1-JL45020007	87	Lock bar	1-JL45021003
62	Dust board	1-JL45020013-117U	88	HSS planer knives (Pack 3)	C20-912
63	Dust board	1-JL45020012	89	Cutter shaft	1-JL45021001
64	Nut M8	1-M8GB6172Z	90	Bearing	1-BRG6205-DDUC3
65	Washer	1-WSH10GB97D1B	91	Right guard	1-JL45031000-076U
66	Dust collector	1-JL45022000-117U	92	Big washer	1-WSH10GB96Z
67	Hexagon bolt M8X16	1-M8X16GB5781Z	93	Set screw M8X6	1-M8X6GB77B
68	Non-return block	1-JL45020010	94	Belt pulley for cutter shaft	1-JL45050001
69	Right cutterhead bracket	1-JL45020001-001G	95	Flat key	1-PLN6X16GB1096
70	Retainer ring	1-CLP52GB893D1B	96	Insert screws T25 (Pack 10)	25-594
71	Washer	1-JL45051005	97	Carbide insert knives (Pk 10)	25-599
72	Spring	1-JL45020004	98	Cutterhead shaft	1-JL45021001A
73	Screw	1-JL45020003	99	Thin nut	1-M6GB6172D1Z
74	Hexagon bolt M10X25	1-M10X25GB5783B	100	Oil inlet	1-JL45020019
75	Rod	1-JL45020009			

NOTE: Please reference the Key Number when calling for Replacement Parts.
For Parts under Warranty, the Serial Number of your machine is required.

CUTTERHEAD ASSEMBLY

PARTS DIAGRAM

PLANER TABLE ASSEMBLY



NOTE: Please reference the Key Number when calling for Replacement Parts. For Parts under Warranty, the Serial Number of your machine is required.

PARTS LIST

KEY NO.	DESCRIPTION	PART NO.	KEY NO.	DESCRIPTION	PART NO.
151	Hex socket cap screw M6X45	1-M6X45GB70Z	174	Rod	1-JL45040012
152	Nut M6	1-M6GB41Z	175	Planer table	1-JL45040001B-001G
153	Thread Tube	1-JL45040006	176	Indicator	1-JL45040020
154	Thread rod	1-JL45040007	177	Spring washer	1-WSH10GB93B
155	Bracket	1-JL45040004B	178	Hex head screw M10X35	1-M10X35GB5783B
156	Shaft sleeve	1-P23X20X15GB12613	179	Tube	1-JL45040002A-001G
157	Circlip	1-CLP20GB894D1B	180	Set screw M8X20	1-M8X20GB77Z
158	Lifting shaft	1-JL45040009A	181	Locking plate	1-JL45040005
159	Hex socket cap screw M8X12	1-M8X12GB70Z	182	Locating sleeve	1-JL45040003A-001G
160	Flat Washer	1-WSH8GB97D1Z	183	Spring washer	1-WSH8GB93Z
161	Flange plate	1-JL45040028	184	Hexagon bolt M8X35	1-M8X35GB5782B
162	Set screw M6X8	1-M6X8GB77B	185	Gear	1-JL45040010
163	Hex socket cap screw M6X16	1-M6X16GB70Z	186	Screw M6X12	1-M6X12GB70D2B
164	Bearing	1-BRG6202-2Z-P5GB276	187	Big washer	1-WSH6GB96Z
165	Nut M6	1-M6GB6170Z	188	Big washer	1-WSH8GB96Z
166	Circlip ring	1-CLP35GB893D1B	189	Flat Washer	1-WSH8GB97D1Z
167	Locking lever	1-JL45040008	190	Extension table roller	1-JL45041002
168	Handwheel	1-SGSL-D160-d12A	191	Hexagon bolt	1-M8X35GB70D1Z
169	Adjustable handle	1-KTSB-1-B-M8X63X20	192	Cap nut M8X10	1-M8X10GB77B
170	Thin nut M8	1-M8GB6172Z	193	Nut	1-M8GB6170Z
171	Flat Washer	1-WSH6GB97D1Z	194	Extension table support	1-JL45041100-117U
172	Rings	1-JL45040014	195	Hexagon bolt M8X25	1-M8X25GB72D2B
173	Screw M6X25	1-M6X25GB70D2B			

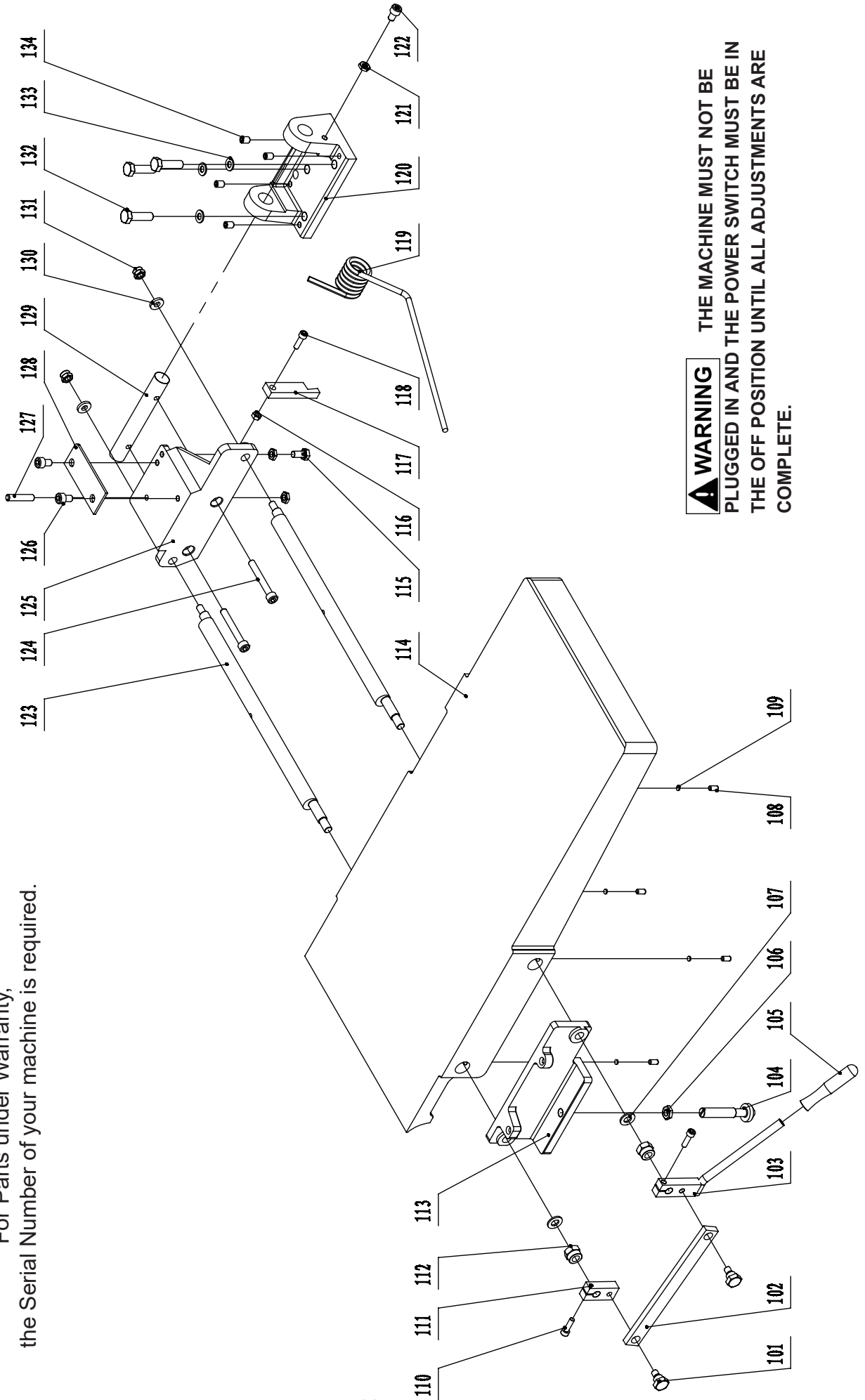
NOTE: Please reference the Key Number when calling for Replacement Parts.
For Parts under Warranty, the Serial Number of your machine is required.

PLANER TABLE ASSEMBLY

PARTS DIAGRAM

INFEED TABLE ASSEMBLY

NOTE: Please reference the Key Number when calling for Replacement Parts. For Parts under Warranty, the Serial Number of your machine is required.



WARNING THE MACHINE MUST NOT BE PLUGGED IN AND THE POWER SWITCH MUST BE IN THE OFF POSITION UNTIL ALL ADJUSTMENTS ARE COMPLETE.

PARTS LIST

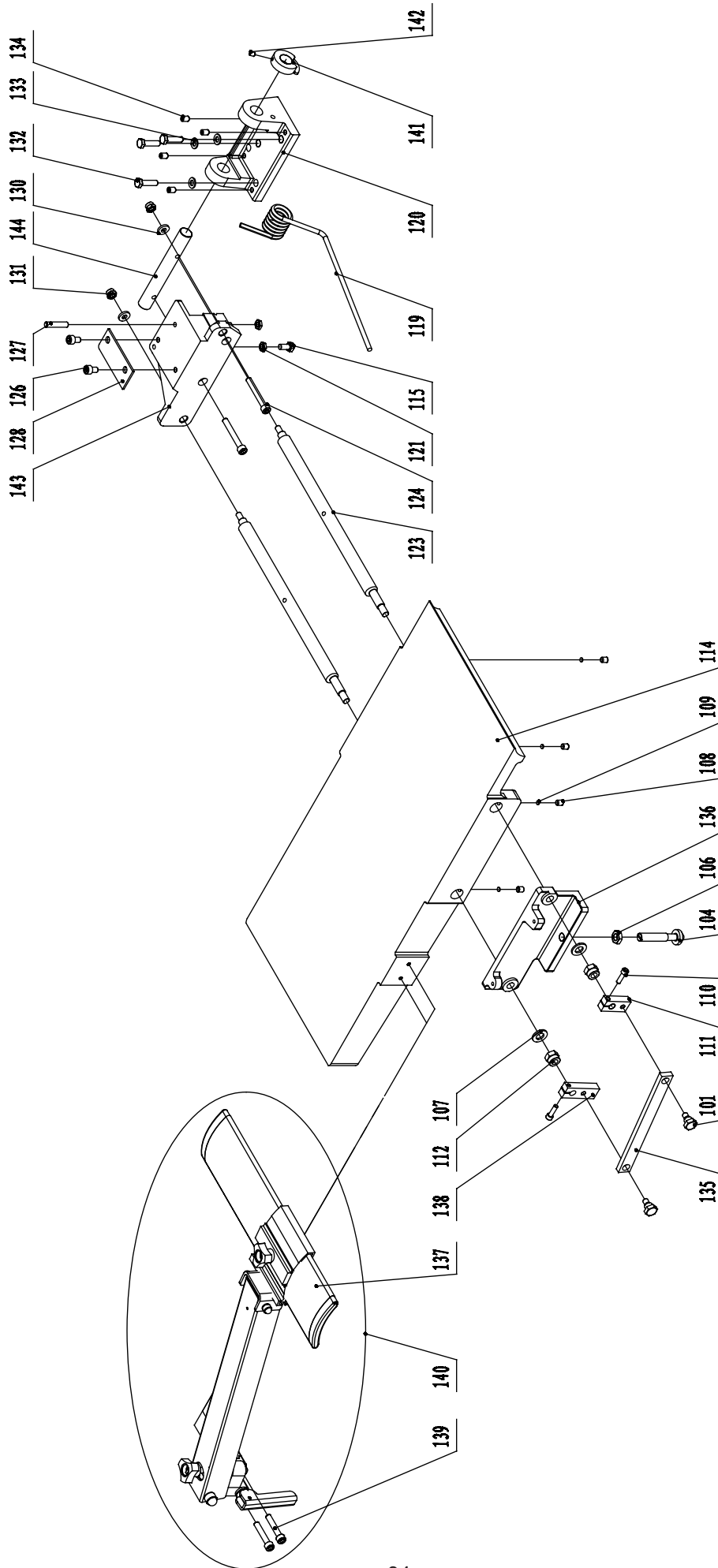
KEY NO.	DESCRIPTION	PART NO.	KEY NO.	DESCRIPTION	PART NO.
101	Shoulder bolt	1-JL45030017	118	Hex screw	1-M8X35GB70Z
102	Rod	1-JL45030013	119	Spring	1-JL43030009
103	Hand shank	1-JL45030012A	120	Support base	1-JL45030005-001G
104	Table lock	1-JL45030008	121	Nut	1-M8GB6172Z
105	Handlebar grip	1-JL45030035A-001S	122	Hex screw	1-M8X12GB70Z
106	Nut	1-M12GB6172Z	123	Eccentric shaft	1-JL45030015
107	Flat Washer	1-WSH12GB97D1Z	124	Screw	1-M8X60GB70B
108	Hex screw	1-M8X10GB77B	125	Front Rack	1-JL45030003-001G
109	Washer	1-JL45030029	126	Screw	1-M8X10GB70B
110	Hex screw	1-M6X20GB70Z	127	Hex screw	1-M8X40GB77B
111	Rod	1-JL45030011	128	Guide plate	1-JL45060028
112	Locknut	1-M12GB889B	129	Support bar	1-JL45030010
113	Rising rack	1-JL45030006-001G	130	Washer	1-JL45030020
114	Planer infeed table	1-JL45030001B-001L	131	Locknut	1-M8GB889Z
115	Screw	1-M8X16GB5781Z	132	Bolt	1-M8X30GB5783Z
116	Nut	1-M8GB6170Z	133	Flat washer	1-WSH8GB93B
117	Table locking block	1-JL45030018	134	Hex screw	1-M8X12GB80B

NOTE: Please reference the Key Number when calling for Replacement Parts.
For Parts under Warranty, the Serial Number of your machine is required.

INFEED TABLE ASSEMBLY

OUTFEED TABLE ASSEMBLY

PARTS DIAGRAM



NOTE: Please reference the Key Number when calling for Replacement Parts.
For Parts under Warranty, the Serial Number of your machine is required.

PARTS LIST

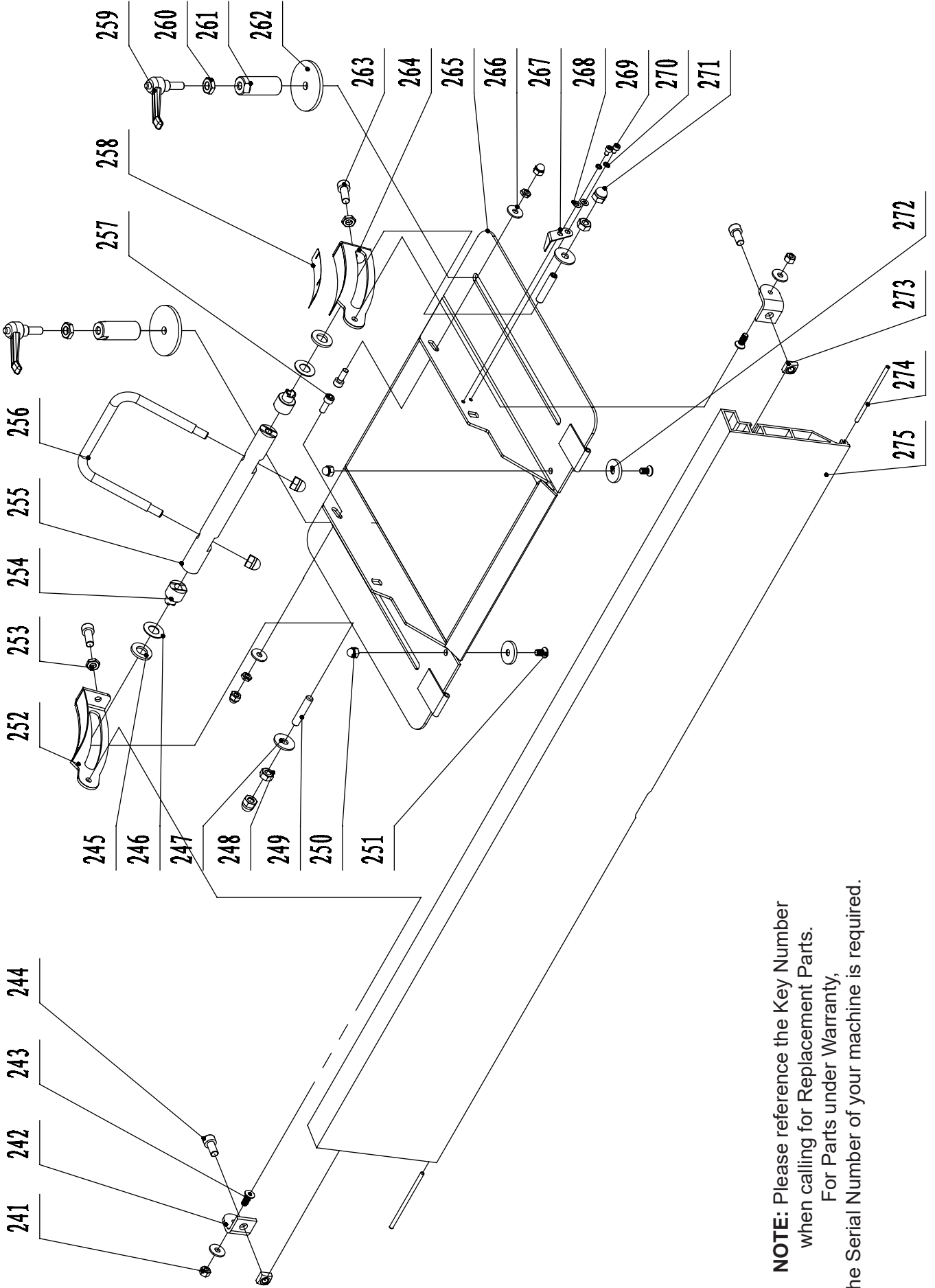
KEY NO.	DESCRIPTION	PART NO.	KEY NO.	DESCRIPTION	PART NO.
101	Shoulder bolt	1-JL45030017	127	Hex screw	1-M8X40GB77B
104	Tighten tube	1-JL45030008	128	Guide plate	1-JL45060028
106	Nut	1-M12GB6172Z	130	Washer	1-JL45030020
107	Flat Washer	1-WSH12GB97D1Z	131	Locknut	1-M8GB889Z
108	Hex screw	1-M8X10GB77B	132	Bolt	1-M8X30GB5783Z
109	Washer	1-JL45030029	133	Spring washer	1-WSH8GB93B
110	Hex screw	1-M6X20GB70Z	134	Hex screw	1-M8X12GB80B
111	Rod	1-JL45030011	135	Rod	1-JL45030013A
112	Locknut	1-M12GB889B	136	Back rack	1-JL45030007-001G
114	Planer outfeed table	1-JL45030001B-001L	137	Cutterhead guard	1-JL45070001
115	Screw	1-M8X16GB5781Z	138	Rod	1-JL45030011A
119	Spring	1-JL43030009	139	Hex cap screw	1-M6X20GB70Z
120	Support base	1-JL45030005-001G	140	Guard assembly	1-FDPT1202070000-099A
121	Nut	1-M8GB6172Z	141	Big deflection wheel	1-JL45090001
123	Eccentric shaft	1-JL45030015	142	Hex screw	1-M6X10GB77B
124	Screw	1-M8X60GB70B	143	Back rack	1-JL45030004-001G
126	Screw	1-M8X10GB70B	144	Back support bar	1-JL45030027

NOTE: Please reference the Key Number when calling for Replacement Parts.
For Parts under Warranty, the Serial Number of your machine is required.

OUTFEED TABLE ASSEMBLY

PARTS DIAGRAM

FENCE ASSEMBLY



NOTE: Please reference the Key Number when calling for Replacement Parts. For Parts under Warranty, the Serial Number of your machine is required.

PARTS LIST

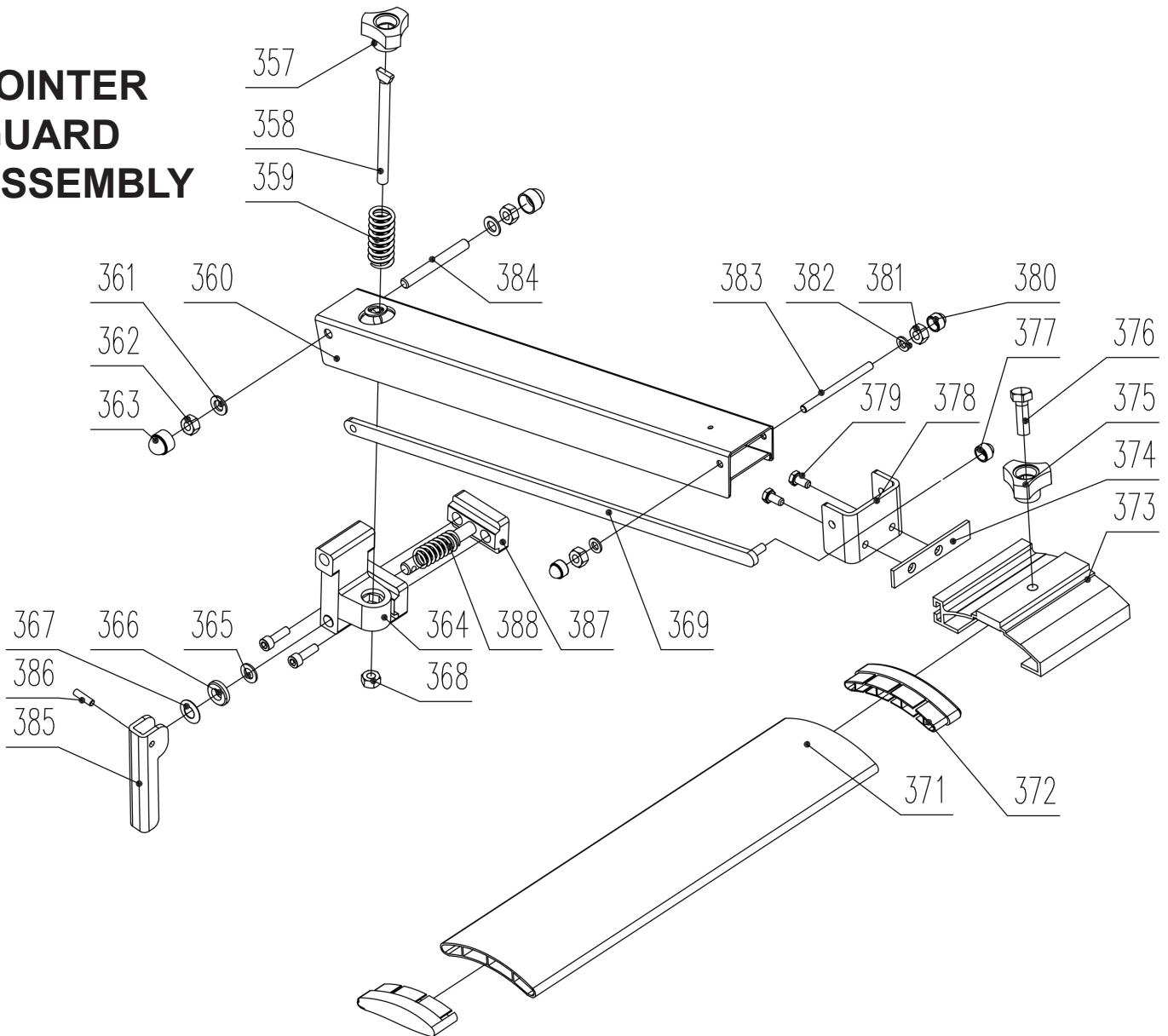
KEY NO.	DESCRIPTION	PART NO.	KEY NO.	DESCRIPTION	PART NO.
241	Nut	1-M6GB41Z	259	Adjust handle	1-KTSB-1-B-M10X80X20
242	Support base	1-JL45060002	260	Nut	1-M10GB6172Z
243	Hex screw	1-M6X16GB70D3Z	261	Lock cylinder	1-JL43060006A
244	Hex screw	1-M8X16GB70Z	262	Washer	1-JL43060005
245	Flat washer	1-WSH12GB97D1Z	263	Hex screw	1-M8X20GB70Z
246	Disc spring washer	1-JL46062006	264	Left support arm	1-JL45060021
247	Big washer	1-WSH8GB96Z	265	Support plate	1-JL45063000A
248	Nut	1-M8GB6170Z	266	Big washer	1-WSH6GB96Z
249	Lock nut	1-M8X60GB80B	267	Angle indicator	1-JL45060026
250	Cap nut	1-M6GB923Z	268	Washer	1-WSH4GB97D1Z
251	Hex screw	1-M6X12GB70D3Z	269	Hex screw	1-M4X6GB70Z
252	Right support arm	1-JL45060020	270	Spring washer	1-WSH4GB93Z
253	Nut	1-M8GB6172Z	271	Cap nut	1-M8GB923Z
254	Lock tube	1-JL45060024	272	Thick washer	1-FDPT1202060016
255	Lock rod	1-JL45060023	273	Square nut	1-M8GB39Z
256	Lock handle	1-JL45060027	274	Long pin	1-JL45060011
257	Hex screw	1-M6X16GB70Z	275	Rip fence	1-JL45060001
258	Fence angle label	1-JL45060007B			

NOTE: Please reference the Key Number when calling for Replacement Parts.
For Parts under Warranty, the Serial Number of your machine is required.

FENCE ASSEMBLY

PARTS DIAGRAM & PARTS LIST

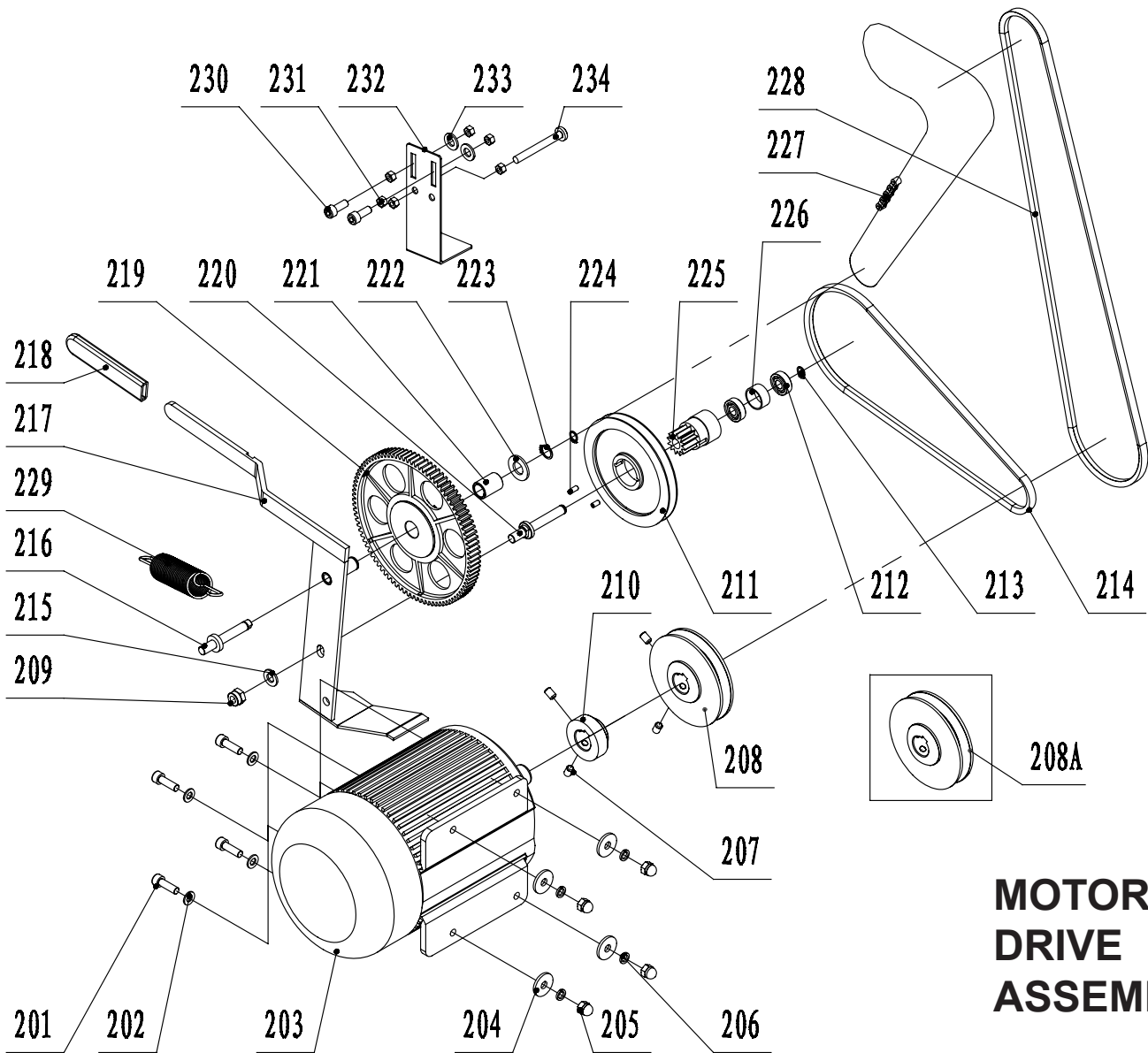
JOINTER GUARD ASSEMBLY



KEY NO.	DESCRIPTION	PART NO.	KEY NO.	DESCRIPTION	PART NO.
357	Handle	1-JL46090002A	374	Base plate	1-JL46090014
358	Thread pull rod	1-JL46090011	375	Handle	1-JL46090002
359	Spring	1-JL46090010	376	Nylon bolt	1-JL46090003
360	Arm	1-JL46090200	377	Hex lock nut	1-M6GB889Z
361	Flat washer	1-WSH8GB97D1Z	378	Sliding sleeve support	1-JL46090013
362	Hex lock nut	1-M8GB889Z	379	Hex head bolt	1-M5X10GB5783Z
363	Nut cover	1-JL46090200	380	Nut cover	1-JL46090015
364	Locking support body	1-JL46090005	381	Hex lock nut	1-M6GB889Z
365	Flat washer	1-WSH10GB97D1Z	382	Nylon washer	1-JL46090020
366	Thick washer	1-JL46090009	383	Screw head shaft	1-JL46090012
367	Disc spring washer	1-JL46090021	384	Screw head shaft	1-JL46090006
368	Hex nut	1-M8GB6170Z	385	Handle assembly	1-JL46091000
369	Longer pull rod	1-JL46090300	386	Pin roll	1-PIN5X18GB119D1B
371	Cutterhead guard	1-JL45070001	387	Locking support	1-JL46090004
372	End socket	1-JL45070002	388	Locking spring	1-JL46090008
373	Sliding sleeve	1-JL46090016			

NOTE: Please reference the Key Number when calling for Replacement Parts.
For Parts under Warranty, the Serial Number of your machine is required.

PARTS DIAGRAM & PARTS LIST



MOTOR & DRIVE ASSEMBLY

KEY NO.	DESCRIPTION	PART NO.	KEY NO.	DESCRIPTION	PART NO.
201	Hex socket cap screw	1-M8X25GB70B	218	Handle sleeve	1-JL45050013
202	Washer	1-WSH8GB97D1Z	219	Big gearwheel	1-JL45051001
203	Motor	2-YLKA901222D	220	Belt wheel spindle	1-JL45051301
204	Big washer	1-WSH8GB96Z	221	Minor sprocket bush	1-JL45051003
205	Cap nut	1-M8GB923Z	222	Washer	1-JL45051005
206	Spring washer	1-WSH8GB93Z	223	Circlip ring	1-CLP15GB894D1B
207	Hex screw	1-M6X10GB80B	224	Set screw	1-M5X10GB77B
208	Motor pulley (25-210)	1-JL45050002C-001G	225	Small gearwheel	1-JL45051102
208A	Motor pulley (25-210H)	1-JL45050002D-001G	226	Bush	1-JL45051103
209	Self-locking nut	1-M10GB889Z	227	Feed roller chain	1-JL45050008
210	Small wheel	1-JL47050005	228	Cutterhead v-belt	1-JL45050009A
211	Belt wheel	1-JL47051101	229	Spring tension	1-JL45050010
212	Bearing	1-BRG6000-2ZGB276	230	Hex screw	1-M6X25GB70D2B
213	Circlip ring	1-CLP10GB894D1B	231	Nut	1-M6GB41Z
214	Feed roller v-belt	1-JL47050007	232	Clamp	1-JL45050011
215	Washer	1-WSH10GB97D1Z	233	Flat Washer	1-WSH6GB97D1Z
216	Chain wheel spindle	1-JL45051004	234	Hexagon bolt	1-M6X60GB5781Z
217	Handle & Bracket	1-JL45051300			