

# 2021 WOODWORKING TOOLS CATALOG

# RIKON®

*Pro Tools for Tool Pros®*

**30"**  
TURNING  
Capacity

**40"**  
EXPANDABLE  
Sliding Bed



**NEW RIKON TOOL INNOVATION**

**Expandable Bed Lathe**

*See Page 12*



*Pro Tools for Tool Pros.*



Visit our website **RIKONTOOLS.COM** to view our catalog, find additional information regarding our products – manuals, parts lists, specifications, accessories, warranty registration, new products – and a listing of authorized RIKON Distributors in your area.

## WOODWORKING TOOLS AND ACCESSORIES

**RIKON POWER TOOLS®** is dedicated to designing and manufacturing woodworking machinery of the highest quality that enhances the woodworking experience. To accomplish this, we analyze the woodworkers' needs and expectations to constantly improve our products. We take great pride in getting to know our customers and listening to their questions and suggestions.

Our goal is to provide excellent quality products at a reasonable price, but also outstanding customer service and satisfaction. Our Technical and Parts Departments are available to service your questions and parts/warranty needs. Our staff's knowledge of woodworking and product design is important to completely answer your questions accurately and efficiently. Our extensive parts inventory enables us to fulfill your needs quickly, so that you can get back to work – fast.

**RIKON values our customers as well as their woodworking experience. We thank you for the opportunity to be your source for your workshop machinery and accessory needs.**

### QUESTIONS? GIVE US A CALL OR EMAIL

Customer Service, Parts & Technical Support  
Monday - Friday: 8:30 AM – 5:00 PM EST

Toll Free: (877) 884-5167 / Local: (978) 528-5380

Fax: (978) 528-5383

Email: [info@rikontools.com](mailto:info@rikontools.com)

For general inquiries and warranty information.

### RIKON POWER TOOLS®

16 Progress Road  
Billerica, MA 01821

### TECHNICAL SUPPORT

[techsupport@rikontools.com](mailto:techsupport@rikontools.com)

Please include the model and serial number of your machine for review. Reference parts or pages in your machines' manual will also help the technician diagnose any problems.

### ORDERING PARTS

[rikonparts.com](http://rikonparts.com)

Use RIKON's secure website to order parts and accessories for your RIKON machinery. Just have your machine's model number to access the parts diagram and parts list for ordering. All major credit cards are honored.

### PARTS SUPPORT

[parts@rikontools.com](mailto:parts@rikontools.com)

For an email reply, please include your RIKON machine's model number, part description, and part number or diagram key number found in the owner's manual.

### RETAIL SALES [sales@rikontools.com](mailto:sales@rikontools.com)

Contact us if your retail establishment is interested in becoming an authorized **RIKON POWER TOOLS®** distributor.

Unless otherwise noted, product names, designs, logos, titles, text, images and other media within this catalog are the trademarks, service marks, trade names, copyrights or other property of RIKON POWER TOOLS ('RIKON POWER TOOLS' Intellectual Property). All other unregistered and registered trademarks are the property of their respective owners. Nothing contained in this catalog should be construed as granting, by implication, estoppel, or otherwise, any license or right to use any of RIKON POWER TOOLS' Intellectual Property displayed in this catalog without the written permission of RIKON POWER TOOLS. RIKON POWER TOOLS is not responsible for any incorrect information provided within this catalog. The specifications, photographs, drawings and information represent the current models when the catalog was prepared. Changes and improvements may be made at any time, with no obligation on the part of RIKON POWER TOOLS to modify previously delivered units. All items purchased from RIKON are made pursuant to a shipment contract. This means that the risk of loss and title for such items pass to you upon our delivery to the carrier. This catalog was developed in the United States of America in accordance with and shall be governed by, and your browsing in and use of this catalog shall be deemed acceptance of the laws of the State of Massachusetts, United States of America. Reproduction in whole or part of this catalog without prior written authorization is prohibited. RIKON and RIKON POWER TOOLS are registered trademarks of RIKON POWER TOOLS © Copyright RIKON POWER TOOLS, Billerica, MA.

# Table of Contents



## Our New Tools for 2020 - 2021

Bandsaws & Accessories .....	4 - 7
Bandsaws Blades .....	8
Table Saw & Accessories .....	9
Lathes & Accessories .....	10 - 15
Dust Masks .....	16
Dust Collectors & Accessories .....	17 - 18
Air Filtration & Accessories .....	19 - 20
Jointer & Accessories .....	21
Planer & Accessories .....	22
Drill/Impact Driver & Accessories .....	23
Cordless Sander/Polisher & Accessories .....	24
Belt & Disc Sander & Accessories .....	25
Metal Cutting Bandsaw & Accessories .....	26
Log Splitter .....	27
Low Speed Bench Grinders .....	28
PRO Sharpening System .....	29



## RIKON LIMITED WARRANTIES

RIKON POWER TOOLS® ("Seller") warrants to only the original retail consumer/purchaser of our products, that each product be free from defects in materials and workmanship for a period specified of either five (5) or two (2) years from the date the product was purchased at retail. Warranties may not be transferred.

These warranties do not apply to defects due directly or indirectly to misuse, abuse, negligence, accidents, repairs, alterations, lack of maintenance or normal wear and tear. Under no circumstances will Seller be liable for incidental or consequential damages resulting from defective products. All other warranties, expressed or implied, whether of merchantability, fitness for purpose, or otherwise are expressly disclaimed by Seller. RIKON's Warranties do not cover products used for commercial, industrial, or educational purposes. The warranty terms for these claims will be limited – A five-year warranty is valid to a two-year period; a two-year warranty is valid to a one-year period.

These limited warranties do not apply to accessory items such as blades, drill bits, sanding discs, grinding wheels, guide bearings or belts and other related items.

Seller shall in no event be liable for death, injuries to persons or property, or for incidental, contingent, special, or consequential damages arising from the use of our products.

To take advantage of a warranty, proof of purchase documentation must be provided which has the date of purchase, serial number of the machine and an explanation of the complaint.

The Seller reserves the right to effect at any time, without prior notice, those alterations to parts, fittings, and accessory equipment which they may deem necessary for any reason whatsoever.



# 10-3061 10" Deluxe Bandsaw

**RIKON**

## MOTOR

Horsepower	1/2 HP
Amps	5.5
Volts, Hz	115V, 60Hz
Speed	1,720 RPM

## CUTTING CAPACITY

Height	5"
Width	9-5/8"

## BLADE (Includes 5/16" x 6TPI, Regular)

Width	1/8" – 1/2"
Length	70-1/2"
2 Blade Speeds	1,515 / 3,280 ft/min

## TABLE

Size	13-3/4" x 12-1/2"
Left Tilt	5°
Right Tilt	45°
Miter Gauge Slot	5/8" x 1/4"
Height to Floor	39-7/8" (w/13-913 stand)
Height to Base	14-1/2"
Fence Size	12-1/4" x 2-3/8"

## OVERALL

Height	34-1/4"
Width	21"
Depth	16-1/4"
Base Size	15-7/8" x 9-3/8"
Dust Port	2-1/2" O.D., 2-5/16" I.D.
Net Weight	77.5 lbs.
Shipping Weight	86 lbs.
Shipping Carton	35-1/2" x 12-3/4" x 18-1/4"

**WARRANTY 5 YEARS**

The numerous features of the **10" BANDSAW 10-3061** make it extremely easy to operate and make adjustments to the blade, guides and fence. The increased cutting capacity, 2 blade speeds, and increased 1/2 HP motor are quite ample enough for smaller projects, and will be appreciated by woodworkers having limited shop space for a larger size bandsaw. Improved features for easy operation – 2 blade speeds, tool-less blade guides, quick-release blade tension lever, tilting 0-45° cast iron table, adjustable rip fence, larger blade tension knob, dust port for shop vacuum hookup, side windows for viewing blade tracking settings, storage hanger for the fence and tools, and safety paddle on/off switch. Reduced size is ideal for transporting, or storing, when not in use. *Includes rip fence. Steel stand is available separately.*

## NEW REDESIGN FEATURES:

- Easy Fitting Dust Port
- Sturdy Door Hinges
- Adjustable Fence Carrier
- Easy Sliding Rip Fence System
- Easy Cutting Adjustments

## STANDARD FEATURES:

- Spring Loaded Tool-less Guide System
- Quick-Release Blade Tension Lever
- 2 Blade Speeds 1,515 or 3,250 ft. / min
- Powerful 1/2HP Motor
- Cutting Height of 5" with 9 5/8" Width

## ACCESSORIES

MODEL	DESCRIPTION
13-920	Miter Gauge
13-913	Steel Stand Height 25" Top: 14-1/2" x 9-3/4" Base: 25" x 18-3/4"
C10-393	Replacement Table Inserts (4 Pack)
C10-394	Zero Clearance Inserts (4 Pack)
C10-990	Replacement Multi-V Drive Belt
C10-405U	Replacement 10" Urethane Tire
C10-109	Replacement Guide Bearings ( 6 Pack)
12-202	LED Gooseneck Work Light with Magnetic Base



TWO BLADE SPEEDS



REDESIGNED  
ADJUSTABLE FENCE



QUICK-RELEASE BLADE  
TENSION LEVER





# 10-324TG 14" Bandsaw

**RIKON**

## MOTOR

Horsepower	1-1/2 HP TEFC
Amps	14/7
Volts, Hz	115/230V, 60Hz

## CUTTING CAPACITY

Height	13"
Width	13-5/8"

## BLADE (INCLUDES 111" x 5/8" , 4 TPI, REG.)

Width	3/16" - 3/4"
Length	111"
2 Blade Speeds	1,445 / 2,950 ft/min

## TABLE

Size	21-1/2" x 15-3/4"
Left Tilt	-5°
Right Tilt	45°
Miter Gauge "T" Slot	(2) 3/4" x 3/8"
Height to Floor	39-1/2"

## OVERALL

Height	75"
Width	30"
Depth	25"
Base Size	21-5/8" x 14-3/4"
Dust Port	1@4"
Net Weight	219 lbs.
Shipping Weight	231 lbs.
Shipping Carton	54" x 17-1/2" x 23-5/8"

**WARRANTY 5 YEARS**

**14" BANDSAW 10-324TG** is RIKON's most popular model due to its many professional features - including tool-less blade guides, a quick release blade tension lever, large adjustment handles, hinged safety blade guard with sight window, high work table height, and base stand with storage shelf. Its dual voltage, 1-1/2 HP motor provides ample power for most every work encountered. Pre-lubricated, sealed thrust and side ball bearing guides give smooth blade support during difficult cuts. *Includes 6" tall rip fence with re-saw bar. Wired for use with 3-wire 120V receptacles.*

## NEW REDESIGN FEATURES

- Tool-less Thumbscrew Bearing Locks
- Longer Fence Rail - Heavy Duty Steel Rail 29" Long

## STANDARD FEATURES

- Rugged Welded Steel Column and Frame
- Balanced Cast Aluminum Drive Wheels
- Resaw Capacity 13"
- Dual Blade Speed Ranges - 1445 / 2950 FPM
- Machined Cast Iron Table with Miter Gauge 'T' Slots
- Quick-Release Blade Tension System Rack and Pinion Upper Guide Adjustments
- Dependable 1-1/2 HP 60Hz Motor



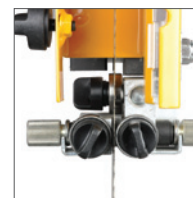
6" FENCE WITH RESAW BAR



LOWER BEARING AND TRUNNION ASSEMBLIES

## ACCESSORIES

MODEL	DESCRIPTION
13-912	Miter Gauge 3/4" x 3/8" T-Slot
13-324	Base Plate Adapter (Must be used with 13-326 mobility kit)
13-326	Mobility Kit (Must be used with 13-324 base plate adapter)
C10-391	Table Inserts (Pack 4)
C10-392	Zero Clearance Insert (Pack 4)
C10-395	Aluminum Table Insert
C10-995	Replacement Multi-V Drive Belt
C10-425U	Replacement 14" Urethane Tire
C10-109	Replacement Guide Bearings (Pack of 6)
12-202	LED Gooseneck Work Light with Magnetic Base
13-926	Smart Motor DVR Control & 1-3/4 HP Motor Upgrade Kit



TOOL-LESS BLADE GUIDE ADJUSTING



4" DUST-PORT

**INCLUDES**  
19-3/4" Tall Steel Stand



\*SHOWN WITH OPTIONAL BASEPLATE (#13-324) AND MOBILITY (#13-326)

# 10-326DVR 14" Deluxe Bandsaw with Smart DVR Technology

**RIKON**

## MOTOR

Horsepower	1-3/4HP Single Phase
Amps	15 Amps
Volts, Hz	115V, 60Hz

## CUTTING CAPACITY

Height	13"
Width	13-5/8"

## BLADE (Includes 111" x 5/8" , 4 TPI, Reg.)

Width	3/16" – 3/4"
Length	111"
Speed (Variable)	100 RPM (45 SFPM) to 2,375 RPM (4400 SFPM)

## TABLE

Size	21-1/2" x 15-3/4"
Left Tilt	-7°
Right Tilt	45°
Miter Gauge "T" Slot	(2) 3/4" x 3/8"
Height to Floor	40-1/2"
Height to Base	20-7/8"
Fence Size	18-3/4" x 1-3/4" x 6"

## OVERALL

Height	75"
Width	33-3/4"
Depth	25"
Base Size	24" x 17-5/8"
Dust Port	1@4"
Net Weight	285 lbs.
Shipping Weight	293 lbs.
Shipping Carton	54-1/2"x17-7/8"x23-7/8"

## WARRANTY 5 YEARS

SMART DVR MOTOR WARRANTY: 2 YEARS

**14" DELUXE BANDSAW 10-326DVR** has all of the 10-326 features with an added benefit! By adding Striatech's smart switched reluctance motor, RIKON's 14" bandsaw is better than ever before. Unlike conventional bandsaw motors, the Striatech motor is infinitely variable, and offers continuous torque. This means you get a consistent and beautiful finish cut on your workpiece, and a much easier user experience. Improved energy efficiency and quiet, vibration-free operation are added bonuses when upgrading your bandsaw with this new high-tech and innovative motor control system. With an easy-to-read screen and DVR controller, this technology adds much-needed features to the bandsaw.

## NEW REDESIGN FEATURES

- **Blade Speed – Variable From 100 RPM (45 SFPM) to 2,375 RPM (4400 SFPM)**
- **Continuous Torque – 1-3/4 HP Motor will Never Slow Down Producing a Beautiful/Smooth Cut**
- **Safer Operation – Fast Electronic Braking and Load Spike Detection**
- **Effortless Cutting – Fifteen Suggested Speed Settings for Wood/Metal/Plastic Plus One Custom Range**
- **Spring Loaded Tool-Less Guide System**
- **Quick-Release Blade Tension System Rack and Pinion Upper Guide Adjustments**
- **Motor – 1-3/4 HP Motor Provides Ample Power for any Sawing Job. Operates on 110V or 220V**



1-3/4 HP MOTOR & CONTROLLER

## ACCESSORIES

MODEL	DESCRIPTION
13-912	Miter Gauge 3/4" x 3/8" T-Slot
13-326	Mobility Kit
C10-391	Table Inserts (Pack 4)
C10-392	Zero Clearance Insert (Pack 4)
C10-395	Aluminum Table Insert
C10-995	Replacement Multi-V Drive Belt
C10-425U	Replacement 14" Urethane Tire
C10-326	Replacement Guide Bearings (Pack of 10)
12-202	LED Gooseneck Work Light with Magnetic Base



BALANCED 14" DIAMETER WHEELS



CONTROLS AND INFORMATION SCREEN



# 10-342EVS 18" Deluxe Bandsaw with Electronic Variable Speed

**RIKON**

## MOTOR

Horsepower	2-1/2HP TEFC
Amps	12.5
Volts, Hz	220V, 60Hz, 1Ph

## CUTTING CAPACITY

Height	13"
Width	17-1/2"

## BLADE

Width	1/4" – 1-3/8"
Length	153"
2 Blade Speeds	82-1,800 / 140-3,280 ft/min

## TABLE

Size	21-1/2" x 15-3/4"
Left Side Extension	4-3/8" x 15-3/4"
Left Tilt	-10°
Right Tilt	45°
Miter Gauge	"T" Slot (2) 3/4" x 3/8"
Height to Floor	35-1/2"
Fence Size	20-7/8" x 1-7/8" x 6"

## OVERALL

Height	72-7/8"
Width	38-1/2"
Depth	28-1/8"
Base Size	29-5/16" x 18-1/8"
Dust Port	2@4"
Net Weight	403 lbs.
Shipping Weight	511 lbs.
Shipping Carton	33-3/4" x 22-1/4" x 79-3/8"

**WARRANTY 5 YEARS**

**18" BANDSAW 10-342EVS** is a variable speed model with many features that professionals will enjoy - including spring-loaded tool-less blade guides, quick-adjust fence system and quick-lock trunnion table angling system, plus, a quick release blade tension lever, large adjustment handles, hinged safety blade guard with sight window. 2-1/2 HP variable speed motor provides ample power and for most every work encountered. Pre-lubricated, sealed thrust and side ball bearing guides give smooth blade support during difficult cuts. Includes 6" tall rip fence with re-saw bar.

## NEW REDESIGN FEATURES:

- Variable Blade Speeds Settings 82 to 3,280 ft/min
- 2-1/2 HP Motor is Computer Monitored for Continuous Power and Torque
- Digital Readout for Viewing Blade Speed
- Resaw Capacity 13"
- Spring Loaded Tool-Less Guide System
- Machined Cast Iron Table with Miter Gauge 'T' Slots
- Quick-Release Blade Tension System
- Rack and Pinion Upper Guide Adjustments

## ACCESSORIES

MODEL	DESCRIPTION
13-912	Miter Gauge 3/4" x 3/8" T-Slot
13-345	Mobility Kit
C10-391	Table Inserts (Pack 4)
C10-392	Zero Clearance Insert (Pack 4)
C10-395	Aluminum Table Insert
C10-988	Replacement Multi-V Drive Belt
C10-446	Replacement 14" Urethane Tire
C10-326	Replacement Guide Bearings (Pack of 10)
12-202	LED Gooseneck Work Light with Magnetic Base



HEAVY CAST IRON WHEELS



PATENTED SPRING-LOADED TOOL-LESS BLADE GUIDE SYSTEM



LARGE CAST IRON WORK TABLE



START-STOP CONTROLS WITH VARIABLE SPEED & DIGITAL READOUT





# Bandsaw Blades



## HOW TO CHOOSE THE RIGHT BLADE

The blade width is measured from the back of the blade to the tips of the teeth. For Cut-Off & Re-Sawing use a wide, stiff blade for straight cutting. For Contour Cutting use a blade that is just wide enough to cut the desired curves (radius) in your work. EX: a 1/4" blade will cut a 5/8" radius; a 1/2" blade a 2-1/2" radius; a 5/8" blade a 4" radius.

The number of teeth per inch (TPI) will determine the ease and smoothness of cut. Use a coarse tooth blade (2, 3 TPI) for re-sawing or for thick stock. Use a fine tooth blade (4, 6 or up to 18 TPI) for general cutting of milled stock. The higher the TPI, the cut will be slower, but leave a smoother finish.



### REGULAR TOOTH

Standard blade style for general cutting of all woods and thin material. Not for resawing.



### HOOK TOOTH

Positive 10° Rake angle with deep gullets is very aggressive. Best for cutting hard, thick and difficult grained woods.



### SKIP TOOTH

0° Rake angle with flat gullet resists clogging. Best for softer woods and resawing.



### VARIABLE TOOTH

Varying set angles and gullet depth reduces vibration. All purpose blade for production work and cut offs.

PART #	LENGTH	WIDTH	GAUGE	TPI	STYLE
19-6401	64-1/2"	1/2"	0.025"	14 TPI	Bi-Metal Reg Metal Cutting Blade
19-6402	64-1/2"	1/2"	0.025"	18 TPI	Bi-Metal Reg Metal Cutting Blade
19-6403	64-1/2"	1/2"	0.025"	8/12 TPI	Bi-Metal Vari Metal Cutting Blade
19-6404	64-1/2"	1/2"	0.025"	10/14 TPI	Bi-Metal Vari Metal Cutting Blade
19-6405	64-1/2"	1/2"	0.025"	14/18 TPI	Bi-Metal Vari Metal Cutting Blade
19-7002	70-1/2"	3/16"	0.025"	10 TPI	Reg Blade
19-7003	70-1/2"	1/4"	0.025"	6 TPI	Hook Blade
19-7004	70-1/2"	3/8"	0.025"	4 TPI	Hook Blade
19-7005	70-1/2"	1/2"	0.025"	3 TPI	Hook Blade
19-7006	70-1/2"	1/8"	0.018"	8 TPI	Hook Blade
19-7007	70-1/2"	1/8"	0.018"	14 TPI	Hook Blade
19-7010	70-1/2"	1/2"	0.025"	14 TPI	Bi-Metal Reg Metal Cutting Blade
19-7011	70-1/2"	1/2"	0.025"	18 TPI	Bi-Metal Reg Metal Cutting Blade
19-7012	70-1/2"	1/2"	0.025"	10/14 TPI	Bi-Metal Reg Metal Cutting Blade
19-7013	70-1/2"	1/2"	0.025"	14/18 TPI	Bi-Metal Reg Metal Cutting Blade
19-9310	93-1/2"	3/16"	0.025"	10 TPI	Reg Blade
19-9311	93-1/2"	3/8"	0.025"	4 TPI	Hook Blade
19-9312	93-1/2"	1/2"	0.025"	3 TPI	Hook Blade
19-9313	93-1/2"	5/8"	0.025"	3 TPI	Hook Blade
19-9910	99-3/4"	1/4"	0.025"	6 TPI	Hook Blade
19-9911	99-3/4"	3/8"	0.025"	4 TPI	Hook Blade
19-9912	99-3/4"	1/2"	0.025"	3 TPI	Hook Blade
19-9913	99-3/4"	5/8"	0.025"	3 TPI	Hook Blade
19-9914	99-3/4"	3/4"	0.032"	3 TPI	Hook Blade
19-1100	111"	1/4"	0.025"	6 TPI	Hook Blade
19-1101	111"	3/16"	0.025"	10 TPI	Reg Blade
19-1102	111"	3/8"	0.025"	4 TPI	Hook Blade
19-1103	111"	1/2"	0.025"	3 TPI	Hook Blade
19-1105	111"	5/8"	0.025"	4 TPI	Reg Blade
19-1511	111"	1/2"	0.025"	14 TPI	Bi-Metal Reg Metal Cutting Blade
19-1512	111"	1/2"	0.025"	18 TPI	Bi-Metal Reg Metal Cutting Blade
19-1513	111"	3/4"	0.035"	8/12 TPI	Bi-Metal Var Metal Cutting Blade
19-1514	111"	3/4"	0.035"	10/14 TPI	Bi-Metal Var Metal Cutting Blade

### HELPFUL HINT:

To prolong the life of your blades, when the bandsaw is not in use for extended periods, release the blade tension. Before reusing the bandsaw, ensure that the blade is retensioned and tracking is checked.

PART #	LENGTH	WIDTH	GAUGE	TPI	STYLE
19-1210	124"	1/4"	0.025"	6 TPI	Hook Blade All-Pro
19-1211	124"	3/8"	0.025"	4 TPI	Hook Blade All-Pro
19-1212	124"	1/2"	0.025"	3 TPI	Hook Blade All-Pro
19-1213	124"	5/8"	0.025"	3 TPI	Hook Blade All-Pro
19-1214	124"	3/4"	0.032"	3 TPI	Hook Blade All-Pro
19-1215	124"	1"	0.035"	2 TPI	Hook Blade All-Pro
19-1410	142"	3/8"	0.025"	4 TPI	Hook Blade
19-1411	142"	1/2"	0.025"	3 TPI	Hook Blade
19-1412	142"	5/8"	0.025"	3 TPI	Hook Blade
19-1413	142"	3/4"	0.032"	3 TPI	Hook Blade
19-1520	142"	1/2"	0.025"	14 TPI	Bi-Metal Reg Metal Cutting Blade
19-1521	142"	1/2"	0.025"	18 TPI	Bi-Metal Reg Metal Cutting Blade
19-1522	142"	3/4"	0.035"	8/12 TPI	Bi-Metal Var Metal Cutting Blade
19-1523	142"	3/4"	0.035"	10/14 TPI	Bi-Metal Var Metal Cutting Blade
19-1701	153"	3/8"	0.025"	4 TPI	Hook Blade
19-1702	153"	1/2"	0.025"	3 TPI	Hook Blade
19-1703	153"	5/8"	0.025"	4 TPI	Hook Blade
19-1704	153"	3/4"	0.032"	3 TPI	Hook Blade
19-1705	153"	1"	0.035"	3 TPI	Hook Blade
19-1531	153"	1/2"	0.025"	14 TPI	Bi-Metal Reg Metal Cutting Blade
19-1532	153"	1/2"	0.025"	18 TPI	Bi-Metal Reg Metal Cutting Blade
19-1533	153"	3/4"	0.035"	8/12 TPI	Bi-Metal Var Metal Cutting Blade
19-1534	153"	3/4"	0.035"	10/14 TPI	Bi-Metal Var Metal Cutting Blade
19-1801	162"	3/8"	0.025"	4 TPI	Hook Blade
19-1802	162"	1/2"	0.025"	3 TPI	Hook Blade
19-1803	162"	5/8"	0.025"	3 TPI	Hook Blade
19-1804	162"	3/4"	0.032"	3 TPI	Hook Blade
19-1805	162"	1"	0.035"	2 TPI	Hook Blade
19-1601	163"	3/8"	0.025"	4 TPI	Hook Blade
19-1602	163"	5/8"	0.025"	3 TPI	Hook Blade
19-1603	163"	3/4"	0.032"	3 TPI	Hook Blade
19-1604	163"	1"	0.035"	2 TPI	Hook Blade
19-1901	176"	3/8"	.025"	4 TPI	Hook Blade
19-1902	176"	1/2"	.025"	3 TPI	Hook Blade
19-1903	176"	5/8"	.025"	3 TPI	Hook Blade
19-1904	176"	3/4"	.032"	3 TPI	Hook Blade
19-1905	176"	1"	.035"	2 TPI	Hook Blade
19-1906	176"	1-1/4"	.035"	1.3 TPI	Hook Blade

# 10-205 10" Contractor Saw with Steel Wings

**RIKON**

## MOTOR

Horsepower	1-3/4 HP
Amps	15/7.5
Volts, Hz	120/240V, 60Hz
Speed	3,450 RPM

## CUTTING CAPACITY

Maximum Depth of Cut at 90°	3-1/8"
Maximum Depth of Cut at 45°	2-3/16"
Maximum Width of Dado	3/4"
Maximum Rip to the Right of Blade	29-1/2"
Maximum Rip to the Left of Blade	14-1/2"
Table in Front of Blade	11-3/8"

## BLADE

Diameter	10"
Teeth	40 ATB, Carbide
Arbor	5/8"
Speed	3,450 RPM
Tilt	Left

## TABLE

Size	27" x 40"
Miter Gauge "T" Slot (2)	3/4" x 3/8"
Height from Floor	31-3/8"
Table Size w/out Wings	20-1/8" x 27"
Left Wing Dimension	9-7/8" x 27"
Right Wing Dimension	9-7/8" x 27"

## OVERALL

Height	45-1/2"
Width	52"
Depth	39"
Dust Port	1@4"
Net Weight	260 lbs.
Shipping Weight	273 lbs.
Shipping Carton	45-1/2" x 30-3/4" x 23"

**WARRANTY 5 YEARS**

**10" LEFT TILT CONTRACTOR TABLE SAW 10-205** is a no nonsense machine whose simplicity is the strength behind its popularity with home craftspeople and professional workshops. Operating this table saw is straight forward – blade controls are large and easy to access, box-type rip fence sets accurately, dual table 'T' slots give great options for use of miter gauges and other jigs, blade changes are easy, blade guards and control switch with large 'off' paddle add excellent safety measures to the user, and the built-in mobile base allows moving the saw around the shop easy. Wired for use with 3-wire 120V receptacles.

## ACCESSORY

MODEL	DESCRIPTION
13-500	Dado Table Insert
C10-100	Push Stick
23-901	Flexible/Expandable Roller Stand

## NEW REDESIGN FEATURES

- Powerful 1-3/4 HP, 1 PH, 120/240V, 3450 RPM Motor
- Industrial Quality, Multi-Ribbed Flat J-Belt for Smooth Power Transfer
- Precision Machined Cast Iron Table Top and Steel Wings
- Dual Table 'T' Slots for Use With Miter Gauges and Jigs
- Magnetic Table Insert Removes Without Tools
- Clear Blade Guard with Riving Knife/Splitter for Extra User Safety
- Built-In Mobile Base Activates with Simple Foot Pressure



RIP FENCE HAS EASY-TO-READ MEASUREMENT SCALES AND SOLID LOCK-DOWN FENCE SYSTEM

INCLUDES MOBILITY KIT



LARGE HANDLES FOR SETTING BLADE HEIGHT AND ANGLES

# 70-150VSR 12" x 16-1/2" VSR Midi Lathe

**RIKON**

## MOTOR

Horsepower	1HP, TEFC
Amps	6
Volts, Hz	120V, 60Hz
Speed	3,200 RPM
Direction	Forward / Reverse

## SPEEDS

Number of Speeds	Variable
Speed Ranges (3)	250-850, 430-1450, 950-3200 RPM

## SWING

Swing Over Bed	12"
Swing Over Tool Rest Base	9-1/4"
Working Distance Between Centers	16-1/2"
Tool Rest Post	1" Diameter

## HEADSTOCK/TAILSTOCK

Headstock Spindle	1" x 8 TPI RH
Outboard Spindle	1" x 8 TPI RH
Outboard Swing Over Bed	15"
Outboard Swing Over Tool Rest Base	12-1/4"
Headstock Taper	MT2
Tailstock Taper	MT2
Ram Travel	3-1/2"
Indexing Positions	24

## OVERALL

Length	39"
Width	13-3/8"
Height	15-5/8"
Base Size	31-13/16" x 7-7/32"
Base to Spindle	13-1/2"
Net Weight	95 lbs.
Shipping Weight	103 lbs.
Shipping Carton (L x W x H)	34-5/8" x 18-1/8" x 10-1/14"

**WARRANTY 5 YEARS**

**12" X 16-1/2" VARIABLE SPEED MIDI LATHE 70-150VSR** is has been designed to offer features seen on larger industrial lathes. An ideal lathe for novice to professional turners. Designed with a powerful 1HP DC motor, electronic variable speed controls, a wide range of operating speeds, digital RPM readout, ample diameter and spindle length turning capacities in forward and reverse drives. Corded control box has a magnetic back that allows it to be moved along the front of the cast iron lathe bed, and positioned where you want it for easiest access when turning. Left, headstock end of the lathe bed is milled to take a special 13-1/2" bed extension (#70-903 sold separately) to allow outboard turning of diameters up to 15".



CONTROL BOX WITH MAGNETIC BACK ATTACHES TO LATHE



MACHINED HEADSTOCK END TO ATTACH 13-1/2" EXTENSION FOR OUTBOARD TURNING



LATHE INCLUDES Spur Center, Live Center, 3" Faceplate, 6" Pro Tool Rest with 1" Diameter Post, Knock-Out Bars, Wrenches and Tool Holder.

## NEW FEATURES:

- Powerful 1 HP DC Motor
- Magnets on Back of the Control Box Allow it to be Placed Anywhere Easily Accessible to Turners for Quick Controlling of the Lathe Speeds or Emergency Stopping.
- Pivoting Belt Cover for Easy Access when Changing Belt Speeds
- Ball-Bearing Construction for Smooth, Precise Spindle Operation
- Machined Bed and Matching Components give Precise Alignment
- Adjustable Locking Handles Keep Components Positioned Securely
- 1" Diameter Tool Rest Post
- Lathe Bed Has Machined Ends for Adding Extensions to Increase Spindle Capacity

**LATHE ACCESSORIES**  
See pages: **13-15**



# 70-1420VSR 14" x 20" Variable Speed Midi Lathe **RIKON**

## MOTOR

Horsepower	1-1/2 HP, TEFC
Amps	11
Volts, Hz	115V, 60 Hz
Speed	2,900 RPM
Direction	Forward / Reverse

## SPEEDS

Number of Speeds	Variable
Speed Ranges (3)	150-720, 550-1650, 1300-3850 RPM

## SWING

Swing Over Bed	14"
Swing Over Tool Rest Base	10-5/8"
Working Distance Between Centers	20"
Tool Rest Post	1" Diameter

## HEADSTOCK/TAILSTOCK

Headstock Spindle	1-1/4" x 8 TPI RH
Outboard Spindle	1-1/4" x 8 TPI RH
Outboard Swing Over Bed	18"
Outboard Swing Over Tool Rest Base	14-5/8"
Headstock Taper	MT2
Tailstock Taper	MT2
Ram Travel	4"
Indexing Positions	24

## OVERALL

Length	43-3/8"
Depth	17-3/8"
Height	18-1/4"
Base Size	36-3/4" x 8-3/8"
Base to Spindle	15-9/32"
Net Weight	137 lbs.
Shipping Weight	146 lbs.
Shipping Carton (L x W x H)	39-9/16" x 20-11/16" x 11-11/32"

## WARRANTY 5 YEARS

**14" X 20" VARIABLE SPEED MIDI LATHE 70-1420VSR** is the largest benchtop lathe in the RIKON line of machinery. This upgraded model gives woodturners increased spindle-to-bed height so that larger diameter work can be done. The addition of 3 machined surfaces to mount optional extensions increase the working dimensions even further. Use the headstock's outboard threaded spindle and optional 13-1/2" Extension (70-903) to add 4" of extra turning diameter capacity. Mount this same extension to the front of the lathe bed, and with the remounted tool rest rest the outside edges or backs of bowls and platters can be safely turned. Lastly, the right bed end of the lathe is machined to attach the optional 13-1/2", or longer 24" Extension (70-901), for increasing the working distance from 20" to 44" for spindles.

## NEW FEATURES

- Increased Spindle Height for creating greater diameter spindles, bowls and platters.
- Lathe Bed Has Machined Ends and Front for Adding Extensions to Increase Turning Capabilities
- Powerful 1-1/2 HP DC Motor
- Magnets on Back of the Control Box Allow it to be Placed Anywhere Easily Accessible to Turners for Quick Controlling of the Lathe Speeds or Emergency Stopping.
- Machined Bed and Matching Components give Precise Alignment
- Ball-Bearing Construction for Smooth, Precise Spindle Operation
- Adjustable Locking Handles Keep Components Positioned Securely
- Pivoting Belt Cover for Easy Access when Changing Belt Speeds
- 8" PRO Tool Rest Features Hardened Steel Top Rod to Provide Extra Control of Tools When Turning



MAGNETIC BACKED CONTROLS MOUNT ANYWHERE ON THE LATHE BED FOR SAFE, EASY ACCESS WHEN TURNING



EXTENSION MOUNTED ON BED FRONT GIVES GREAT ACCESS TO TURNING BOWL OR PLATTER EDGES AND BACK SURFACES



ACCESSORY 70-903 13-1/2" EXTENSION MOUNTED ON LATHE END FOR OUTBOARD TURNING

LATHE INCLUDES Spur Center, Live Center, 3-3/8" Faceplate, 8" PRO Tool Rest, Knock-Out Bars, Wrenches and Tool Holder.

# 70-3040 30" x 40" VSR Lathe with Sliding Bed

**RIKON**

## MOTOR

Horsepower	3 HP TEFC
Inverter	Input 1PH, Output 3PH
Amps	14.8
Volts, Hz	220V, 50/60 Hz
Speed	1,720 RPM
Direction	Forward/Reverse

## SPEEDS

Number of Speeds	Variable
Speed Ranges (3)	20 – 650 / 50 – 1,750 / 100 – 3,850 RPM

## SWING

Swing Over Bed	23-7/32" to 31-1/4"
Swing Over Tool Rest Base	17-13/32" to 25-7/16"
Working Distance Between Centers	20" to 40"
Tool Rest Post Diameter	1"

## HEADSTOCK / TAILSTOCK

Spindle Nose Inch x TPI	1-1/4" x 8
Headstock Taper	MT2
Tailstock Taper	MT2
Ram Travel	4-11/16" (120 mm)
Indexing Positions	36

## OVERALL DIMENSIONS

Length	61-5/8" to 81-5/8"
Depth	30-1/8"
Height	50-3/8"
Floor to Spindle	44"
Net Weight	546 lbs.
Shipping Weight	665 lbs.
Shipping Carton	61-3/4" x 26-5/16" x 34-1/4"

## WARRANTY

**5 YEARS**

**30" X 40" HEAVY DUTY VARIABLE SPEED LATHE 70-3040** features an innovative sliding bed that increases your turning capacity with just a turning of a switch. The special motorized upper bed effortlessly moves to the right, away from the headstock to double the standard between-centers distance from 20" to 40"! Moving the sliding bed also increases the swing from 23-7/32" to 31-1/4" over the lower bed. Ideal for turning large bowls or platters. This space-saving lathe is extra heavy-duty, made of solid cast iron and steel construction to provide professional turners with a robust machine that will take the stress when turning large diameter bowls or spindles. The 3 HP TEFC, 220V motor combined with 4 heavy-duty bearings in the headstock and digital speed controls provide all the power and precision needed for this versatile lathe.

## INNOVATIVE FEATURES

- Motorized Sliding Bed – Increases Spindle Length 20" up to 40"
- Motor & Switch – Beefy 3 HP Motor Delivers Ample Power
- Index Head – 3-Step, Multi-V Pulleys include 36 Index Positions
- Control Box – Magnetic Back Positions Controls Anywhere Along the Bed
- LCD Speed Display – Big Easy-to-Read Speeds from 20 to 3850 RPMs
- Banjo – Cast Iron Tool Rest Base is Extra Wide and Sturdy



LATHE'S MOTORIZED SLIDING BED EXTENDS FROM 20" UP TO 40" FOR SPINDLE WORK AND INCREASES SWING TO 31-1/4"



CONTROL BOX HAS MAGNETIC BACK SO IT CAN BE SET ANYWHERE ALONG THE LATHE BED



LCD DISPLAY SHOWS THE SPINDLE'S SPEED IN BIG EASY-TO-READ NUMBERS



HEAVY DUTY LATHE SHOWN IN STANDARD COMPACT POSITION



TAILSTOCK'S QUILL EXTENDS 4-11/16" AND INCLUDES TOOL STORAGE

# Lathe Accessories for 70-3040

**RIKON**

## RIKON PRO TOOL RESTS

Interchangeable turning Tool Rest Tops and Posts let you mix and match parts to meet the tool rest sizes that you need. Posts have M12 x1.25 threaded ends that install into the base of the Tool Rest Tops. The Spring Washer secures the post and top together.



### A. PRO TOOL REST TOPS ONLY

- 70-975 4" (102 mm) Long
- 70-976 6" (152 mm) Long
- 70-977 8" (203 mm) Long
- 70-978 12" (305 mm) Long

### B. COMPRESSION SPRING WASHER ONLY

- 70-970 1" (25.4 mm) diameter

### C. PRO TOOL REST POSTS ONLY (INCLUDES WASHER)

- 70-966 5-1/8" (130 mm) Long x 1" (25.4 mm) diameter
- 70-965 4-5/16" (110 mm) Long x 1" (25.4 mm) diameter
- 70-967 3-3/4" (95 mm) Long x 1" (25.4 mm) diameter
- 70-969 3-3/8" (85 mm) Long x 1" (25.4 mm) diameter
- 70-968 2-3/4" (70 mm) Long x 5/8" (15.9 mm) diameter

## TOOL REST EXTENSION



Increases the reach of tool rests for turning surfaces not possible with standard tool rests. Has 1" post and hole, with 7-1/2" reach.

- 70-960 Tool Rest Extension



## ADJUSTABLE FEET

All-metal feet with 3-1/8" (80 mm) swivel base pads. Set includes hardware to install on lathe legs with pre-bored mounting holes.

- 70-972 Adjustable Feet, Set of 4

## RETRACTABLE SWIVEL CASTERS

Includes brackets and hardware to install these 2-1/2" diameter casters on the 70-3040 Lathe legs. Foot activated pedals raise the lathe about a 1", so the lathe can be easily moved when needed.

- 70-971

Retractable Swivel Casters, Set of 4



## TOOL REST HEIGHT EXTENSION

Raises tool rests 4" higher when working on larger swing capacity lathes. Has 1" post and 1" receiving hole for securing your tool rests with its lever handle.

- 70-959 Tool Rest Height Extension



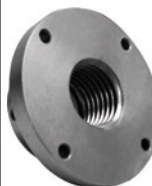
## GAP BED INSERT



This short, duplication of the 70-3040 lathe's upper lathe bed installs over the exposed lower bed and continues the upper bed track at the same height as the sliding bed. This means that your tool rest base can be now positioned anywhere on the lathe for turning, sliding from end-to-end, between center-to-center. A second tool rest base is not needed.

- 70-907 Gap Bed Insert

## FACE PLATES



Have holes for screw mounting of projects. For lathes with 1-1/4" x 8 TPI spindle threading.

- 70-934 3-3/8" Diameter
- 70-937 6" Diameter

## TOOL REST BASE ASSEMBLY

For use on the lower bed when the lathe's sliding bed is extended for turning spindles. This second tool rest (with height extender), along with the other supplied base on the sliding bed, permits turning along a full 40" long spindle by switching gouges between the two rests. Includes base assembly only, without tool rest or tool rest height extension.

- 70-958 Tool Rest Base Assembly



*This is the same tool rest base that is supplied with the 70-3040 lathe.*

## 60° LIVE CENTER

Great for centering stock with 1/8" to 1-3/8" pre-drilled end holes for turning. Features sealed double ball bearings for smooth operation, #2 Morse Taper and alloy steel construction.



- 70-942 60° Live Center

## DRILL CHUCK & ARBOR SET

Set includes Keyed Chuck with 1/32" to 5/8" diameter holding capacity. Use on lathes with MT2 spindle holes.

- 30-991 Drill Chuck & Arbor Set



## NYLON SPINDLE WASHER

Install on 1-1/4" x 8TPI lathe spindles for easier removal of faceplates and chucks. 1-3/8" ID x 1-3/4" OD.

- 70-990 Nylon Spindle Washer



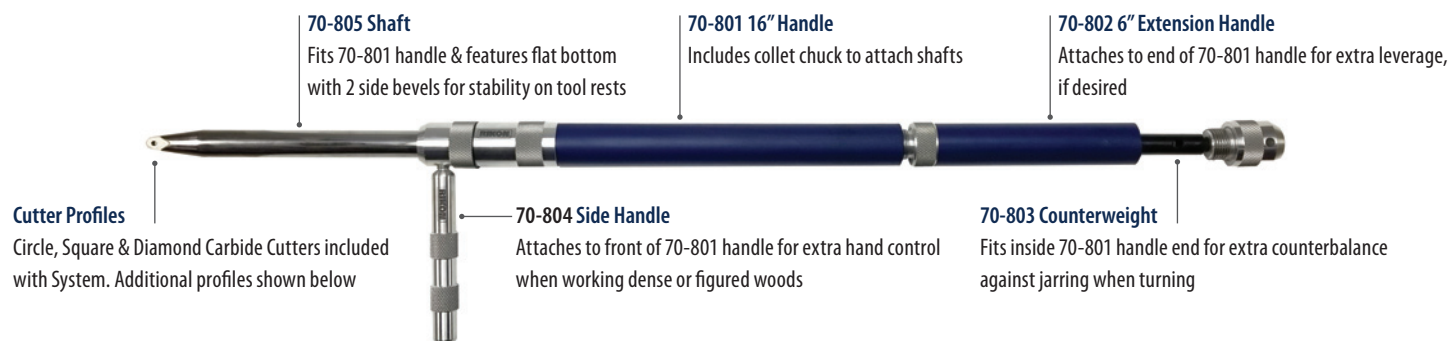


## 70-800 WOOD TURNING SYSTEM

Developed for the experienced or novice wood turner, RIKON's patented 4-piece turning set features tungsten carbide cutters that keep their sharp cutting edges longer than typical carbon or high speed steel tools. After hours and hours of use, if a cutter becomes dull, just rotate it to work with another fresh new edge. Changes only take seconds.

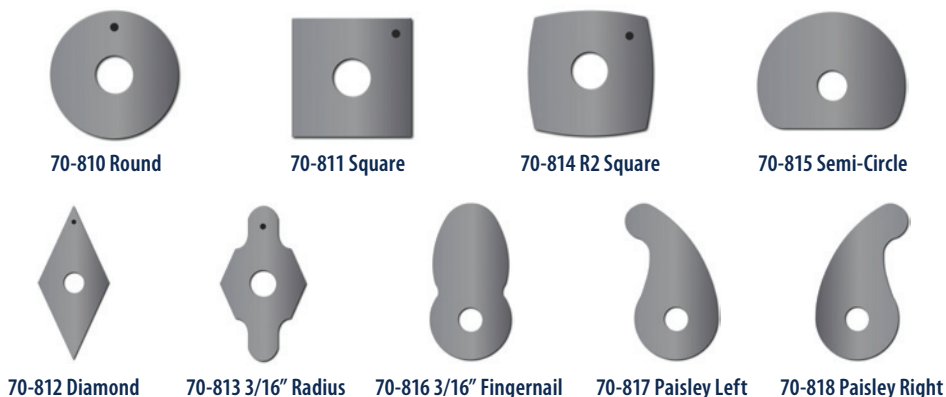
System includes a 16" long, machined aluminum Handle with an anti-vibration grip that

features a unique forward chucking system. Three, 8-3/8" steel Shafts are supplied with either a Circle, Square or Diamond shaped carbide Insert Cutter secured to their end with a T20 screw. The finely machined shafts have bottoms that are milled with a flat, and two side bevels for extra stability on the tool rest when turning. Packaged in a presentation storage box with CNC cut hard foam center.



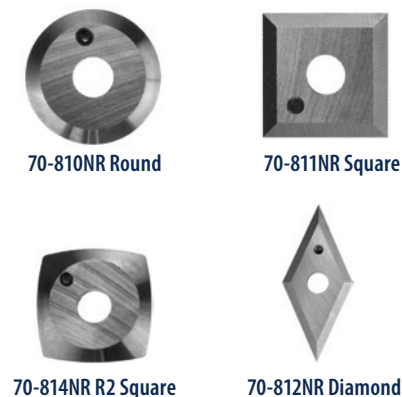
## TUNGSTEN CARBIDE INSERT CUTTERS

These long lasting, extremely hard cutters work through the hardest woods in either a scraping or shear cutting mode. Carbide insert cutters are primarily used for the final shaping and detailing of turnings. The variety of cutter shapes will provide you with many options for shaping and decorating your turnings. Made of premium micrograin carbide, these inserts can be sharpened with diamond abrasives. Simply lap the entire TOP surface only to reveal a new cutting edge. Do not sharpen or change the angle of the bevel edge.



## NEGATIVE RAKE INSERT CUTTERS

Developed primarily for use in pen turning using plastics, acrylics, resins and dense woods, these carbide cutters feature an additional top bevel grind\*. This lower bevel angle reduces the inserts' cutting action for final shaping of these hard materials.



## WOOD TURNING GOUGES

Now available for use with RIKON's 70-800 Patented Wood Turning System, these traditional style gouges will now extend your working capabilities from roughing out blanks, to the fine finishing of your turnings with the tungsten carbide insert cutters in the System. These Gouges are made with M35 High Speed Steel, noted for resisting high heat and retaining sharp cutting edges. This means you get longer times turning before having to re-sharpen a dull cutting edge. Special 14mm diameter shaft ends fit into the 70-801 16" Handle's collet chuck for use. Gouges are factory ground and require final sharpening before use.



## SPINDLE GOUGES

- 70-851** 1/4" Spindle Gouge, 8-7/8" OAL, 5-1/2" Blade, 3-15/16" Grind, 1/4" (7mm) diameter
- 70-852** 3/8" Spindle Gouge, 9-9/16" OAL, 6-7/32" Blade, 4-3/4" Grind, 3/8" (10mm) diameter
- 70-853** 1/2" Spindle Gouge, 10-5/16" OAL, 7" Blade, 5-1/2" Grind, 1/2" (13mm) diameter



## BOWL GOUGES

- 70-841** 3/8" Bowl Gouge, 12-1/8" OAL, 9" Blade, 5-11/16" Grind, 3/8" (10mm) diameter
- 70-842** 1/2" Bowl Gouge, 12-1/8" OAL, 9" Blade, 6-1/8" Grind, 1/2" (13mm) diameter
- 70-843** 5/8" Bowl Gouge, 12-1/8" OAL, 9" Blade, 6-11/16" Grind, 5/8" (16mm) diameter



# Lathe Accessories

**RIKON**

## RIKON PRO TOOL RESTS

Interchangeable turning Tool Rest Tops and Posts let you mix and match parts to meet the tool rest sizes that you need. Posts have M12 x1.25 threaded ends that install into the base of the Tool Rest Tops. The Spring Washer secures the post and top together.

### A. PRO TOOL REST TOPS ONLY

- 70-975 4" (102 mm) Long
- 70-976 6" (152 mm) Long
- 70-977 8" (203 mm) Long
- 70-978 12" (305 mm) Long



### B. COMPRESSION SPRING WASHER ONLY

- 70-970 1" (25.4 mm) diameter

### C. PRO TOOL REST POSTS ONLY (INCLUDES WASHER)

- 70-966 5-1/8" (130 mm) Long x 1" (25.4 mm) diameter
- 70-965 4-5/16" (110 mm) Long x 1" (25.4 mm) diameter
- 70-967 3-3/4" (95 mm) Long x 1" (25.4 mm) diameter
- 70-969 3-3/8" (85 mm) Long x 1" (25.4 mm) diameter
- 70-968 2-3/4" (70 mm) Long x 5/8" (15.9 mm) diameter

## TURNERS' TOOL ROLL

- Great for Transporting Turning Tools
- Rolls Up for Easy Transport
- Fits Up to 17 Turning Tools to 16" Long

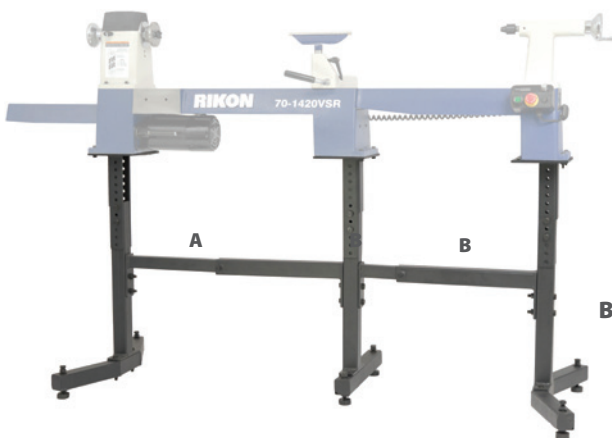


- Made from Durable 600 x 600 Denier Fabric
  - Quick Release Buckle to Secure when Rolled
  - Full Size: 35" X 13"
  - Folded Size: 17-1/4" X 13"
- 99-500 Turners' Tool Roll



## LATHE CENTERS – WITH MT2 TAPERS

- 70-943 Spur Center, 3-1/16" long
- 70-942 60 Degree Live Center, 5" long (See page 13)
- 70-945 Live Center, 4-1/2" long
- 70-948 Center Point for 70-943 & 70-945
- 30-991 5/8" Keyed Drill Chuck and Arbor - Set includes Keyed Chuck with 1/32" to 5/8" diameter holding capacity. (See page 13)



## LATHE BED EXTENSIONS

Lathe Bed Extensions are made of heavy cast iron with machined beds and ends. Extensions bolt to the right end of the lathes to extend their working spindle length capacity.

- 70-901 24" Bed Extension for 70-150VSR\*\*, 70-1420VSR, 70-220VSR
- 70-903 13-1/2" Bed Extension for 70-150VSR, 70-1420VSR, 70-220VSR
- 70-904 24" Bed Extension for 70-150VSR, 70-1420VSR, 70-220VSR
- 70-906 21-1/2" Bed Extension for 70-105
- 70-900B 24" Bed Extension for 70-100



## A UNIVERSAL STAND FOR MINI AND MIDI LATHES

Rugged, all-steel stand adjusts from 23-1/4" to 37-1/4" long and 24-1/2" to 34-1/2" high to its top mounting plates. Includes anti-vibration rubber feet that will adjust to uneven floors for added stability.

- 70-920 Universal Stand for Mini and Midi Lathes

## B STAND EXTENSION

Stand bolts onto the 70-920 lathe stand end to increase the stand length 18-3/4" to 32-1/4" for holding lathes with bed extensions.

- 70-913 Stand Extension



## BADGER SAFETY SPUR CENTER

The only lathe drive center with a safety guard! The unique spring-loaded guard prevents accidental contact with the spurs with turning chisels or the tool rest. Fits all lathes with MT2 tapers. Use on spindles down to 1/2" diameter.

- 70-940 BADGER Safety Spur Center

## FACE PLATES

Machined metal plates for mounting bowl or platter wood blanks for turning. Multiple holes in the faceplates for securely attaching workpieces with screws.

- 70-933 3" Faceplate 1" x 8TPI
- 70-934 3-3/8" Faceplate 1-1/4" x 8TPI
- 70-936 6" Faceplate 1" x 8TPI
- 70-937 6" Faceplate 1-1/4" x 8TPI



## NYLON SPINDLE WASHERS

Install on spindles for easier removal of faceplates and chucks.

- 70-992 1-3/64" ID x 1-5/8" OD, for 1" x 8TPI Spindles
- 70-990 1-3/8" ID x 1-3/4" OD, for 1-1/4" x 8TPI Spindles



## LED WORK LIGHT WITH MAGNETIC BASE

Light up your work with this powerful work-shop light. LED bulb produces 500 lumens of light and the beam can be adjusted in size by focusing the magnifying lens in the head. The flexible 18" long gooseneck bends to position the light right where you need it. The magnetic base holds firmly on any steel surface, making it versatile for mounting on machines, or anywhere in the workshop or home. Light runs on 3 AA batteries (not included), or with the supplied USB cord and electrical outlet converter (not included). Includes a side clip with magnetic back for alternative mounting options on steel products.

- 12-202 Led Work Light with Magnetic Base



# Half Mask **Respirator**

**RIKON**

**HIGHEST**  
FILTRATION EFFICIENCY  
99.999%



**LOWEST**  
BREATHING RESISTANCE  
OF ANY HALF MASK ON THE MARKET

## **STEALTH HALF MASK RESPIRATOR** W/FILTERS

99-100ML – MEDIUM/LARGE

99-100SM – SMALL/MEDIUM

Modern, low profile ergonomic half mask comes with twin P3 HEPAC pleated filters already fitted. Grille covers the entire filter surface area deflecting particulates & moisture away. Material is odor-free and non-allergenic, with latex and silicone-free face seals. Less clogging pressure and inward leakage.

### **FEATURES**

- Highest filtration efficiency at 0.3 microns - 99.999% offering protection against wood dust, silica dust, weld fumes, asbestos, oils, mists, aerosols.
- Lowest breathing resistance of any half mask on the market for maximum comfort & less condensation build-up.
- Sleek unobtrusive design to accommodate visors, helmets, spectacles/goggles & other PPE.
- Large downward facing exhaust for non-misting or steaming of goggles.
- TPE medical grade face seal so it can be worn for 8+ hours.
- Odor free and materials are latex & silicone-free
- Filters conform to NIOSH N100 standards

### **ACCESSORIES**

MODEL	DESCRIPTION
99-101	Replacement Filters
99-102	Carrying Case



PACKAGE INCLUDES:  
Mask, Adjustable strap, and 2 - Filters

HALF MASK SHOWN WITH OPTIONAL CARRYING CASE

TWO REPLACEABLE NIOSH N100 RATED FILTERS INCLUDED

EASY FILTER CHANGE:  
TWIST TAB TO OPEN COVER AND CHANGE FILTER



# 63-110 12 Gallon Dust Extractor

**RIKON**

## MOTOR

Horsepower	1.5HP
Amps, Watts	9.2A, 1100W
Volts, Hz	120V, 60Hz
Filter (Micron)	0.5
Canister Size	12 Gallons
Hose Connection	4"
Air Flow	142 CFM
Sound Level	<95dB

## OVERALL

Height	25-1/4"
Diameter	15"
Net Weight	23.4 lbs
Shipping Weight	27 lbs.
Shipping Carton	17" x 17" x 26-3/4"

**WARRANTY 5 YEARS**



TWO STAGE FILTRATION WITH CARTRIDGE & FILTER BAG

**1-1/2 HP DUST EXTRACTOR 63-110** is a small canister-type vacuum system with a 12 gallon capacity, and plenty of power. Easily portable from machine to machine with its top carry handle. Great for use with sanders and bandsaws that create small dust and chips. Includes convenient top on/off switch, 4" x 6.5' hose, hose clamps (2), 4" hose connector fittings (2), Hose Fitting Set (4), filter cartridge, and replacement paper filters (5). For dry use only (not for sucking up water or other liquids). Wired for use with 3-wire 120V receptacles.

## FEATURES

- 1-1/2 HP Develops 142 CFM
- 12 Gallon Capacity
- Convenient top carry handle and on/off switch
- Includes 4" x 6.5' hose, hose clamps (2), 4" hose connector fittings (2), Hose Fitting Set (4), filter cartridge, and replacement paper filters (5)

## DRY USE ONLY

*Not for Wet Applications*



CONVENIENTLY LOCATED TOP CARRYING HANDLE AND EASY ACCESS ON/OFF SWITCH

## ACCESSORIES

MODEL	DESCRIPTION
63-915	Filter Cartridge
63-920	Replacement Paper Filter Bags (5 Pack)
63-900	Mobility Kit



USE THE QUICK HAND CLAMP TO EASILY REMOVE THE LID TO CHANGE OUT THE BAG, FILTER, OR EMPTY THE 12 GALLON METAL CANISTER



SPECIAL STEEL BRACKETS INSTALLED ON WALLS WILL HOLD THE DUST EXTRACTOR NEXT TO A DEDICATED MACHINE FOR USE OR FOR STORAGE



DURABLE DUST HOSE 4" x 6.5'

# 60-101 Wall Mounted 1HP Dust Collector

**RIKON**

## MOTOR

Horsepower	1HP TEFC
Amps	7/3.5
Volts, Hz	120/240V, 60Hz
Speed (No Load)	3,450 RPM
Air Flow @ 4"Diameter	800 CFM
Air Flow @ 5"Diameter	1,100 CFM
Blower Impeller	10" Diameter, Steel

## DUST COLLECTOR

Canister Filtration	1 Micron
Filtration Efficiency	99%
Canister Pleated Filter	19-5/8" x 7-1/8"
Total Pleated Filter Surface	13.46 sq/ft"
Bag Diameter	19-1/2"
Filter Cleaning Method	Hand Cank, Internal Rotating Flapper
Bag Length (installed)	20"
Bag Capacity	1.5 Cubic Feet
Dust Ports/Hose Connections	1@5", 2@4"
Intake Size	5" Diameter
Dust Hose Size	9' Long x 4" Diameter
Sound Rating @ 6 feet	<86.375dB

## OVERALL (CANISTER ONLY)

Length	46"
Width	23-1/2"
Depth	21"
Net Weight	61 lbs.
Shipping Weight Box 1 of 2	42 lbs.
Shipping Carton Box 1 of 2	18-1/2" x 15-3/4" x 18"
Shipping Weight Box 2 of 2	19 lbs.
Shipping Carton Box 2 of 2	22" x 22" x 13"

## WARRANTY

**5 YEARS**

**WALL MOUNTED 1HP DUST COLLECTOR 60-101** provides great dust collection for your machines, while saving valuable floor space as it is wall mounted! TEFC motor with 10" impeller develops 800 CFM of suction for drawing in dust and chips from bandsaws, jointers and planers. Machine has a single 5" dust port with a dual 4" dust intake 'Y' fitting for use with two operating machines at one time. All metal construction. Includes wall mounting bracket, pleated canister filter, lower disposable plastic chip bag, quick-release band clamp, one 4" inlet cap, and safety on/off switch. Motor is 120/240V, and is wired for use with 3-wire 120V receptacles.

## FEATURES

- Save Shop Space with Wall-Mounted Dust Collector
- 1HP TEFC 120/240V Motor
- Powerful 800 or 1,100 CFM Suction
- 4" (2) or 5" Hose Inlet Options
- Pleated Canister Filter is 1 Micron Rated
- Disposable 1.5 cu/ft Plastic Debris Bag

## DRY USE ONLY

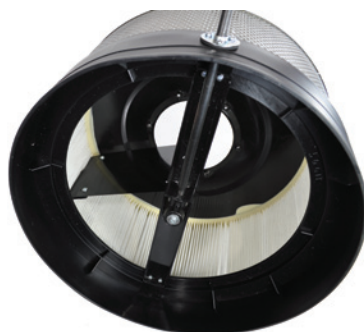
*Not for Wet Applications*

## ACCESSORIES

MODEL	DESCRIPTION
60-904	Replacement Plastic Dust Bag (5 Pack) 20" long
60-902	Replacement Plastic Dust Bag (5 Pack) 31" long



FITTING WITH HOSE



INTERIOR OF FILTER



WALL MOUNT



**DUST COLLECTOR INCLUDES:** Wall Mounting Bracket, Pleated Canister Filter, Lower Disposable Plastic Chip Bag, Quick-Release Band Clamp, One 4" Inlet Cap, and Safety On/Off Switch



# 62-450 Air Filtration System 450 CFM

**RIKON**

## MOTOR

Horsepower	1/4 HP
Amps	1.5
Volts, Hz	120V, 60Hz
Speeds	250, 350, or 450 CFM
Cubic Feet Per Minute	450 CFM
Filter Size	9-1/2" x 16-1/2" x 2"
Filter (Microns)	Outer 5, Inner 1
Sound Rating on High	68 dB
Timer Settings	1, 2, or 4 Hour Segments
Cleans	20' x 20' x 8' Room 8 Times Per Hour

## CONSTRUCTION

Cabinet	20 Gauge Steel
Blower Wheel Material	Steel
Blower Type	Squirrel Cage

## OVERALL

Length	19-3/4"
Width	16-3/4"
Height	10"
Net Weight	28.5 lbs.
Shipping Weight	32.5 lbs.
Shipping Carton	23-1/4" x 20" x 13"

**WARRANTY 5 YEARS**

**1/4 HP AIR FILTRATION SYSTEM 62-450** is very effective for smaller sized shops with its air flows of 250, 350 or 450 CFM. For large rooms up to 20' x 20' x 8' with average dust creation from work, this unit will circulate and clean the air 8 times per hour. Unit includes fuse overload protection.

## FEATURES

- Sturdy 20 Gauge Steel Cabinet Construction
- Three Speed Settings of 250, 350, 450 CFM
- Three Timer Settings
- Settings Via Push Buttons or Remote Control
- Quick Release Latches for Easy Filter Changes
- Replaceable Inner and Outer Filters
- Eye Bolts for Ceiling Mounting
- Top Carry Handle for Easy Moving the System Around the Shop

## ACCESSORIES

MODEL	DESCRIPTION
62-901F	Outer Filter 9-1/2" x 16-1/2" SEP Pleated, 5 Micron
62-902F	Inner Filter Bag 9-1/2" x 16-1/2", 1 Micron

**UNIT INCLUDES:**  
Fuse Overload Protection, Eye Bolts for Ceiling Mounting, and a Top Carry Handle for Easy Moving



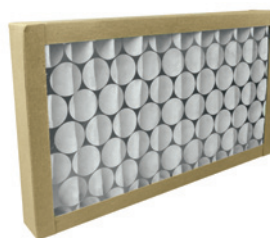
**EYE BOLTS FOR CEILING MOUNTING**



REMOTE CONTROL



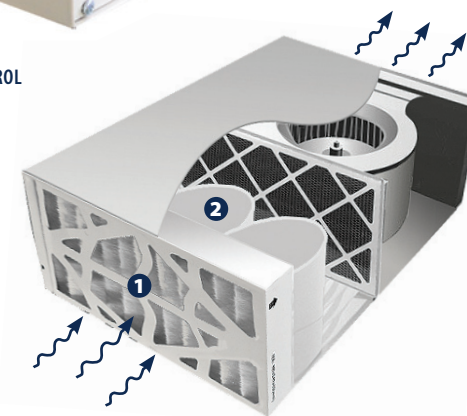
QUICK LATCH SYSTEM FOR CHANGING FILTERS



ACCESSORY 62-901F  
OUTER FILTER 9-1/2" X 16-1/2"  
SEP PLEATED, 5 MICRON



ACCESSORY 62-902F  
INNER FILTER BAG 9-1/2" X 16-1/2",  
1 MICRON



HOW AIR MOVES THROUGH TWO STAGE  
AIR FILTRATION SYSTEM



# 62-1100 Air Filtration System 1100 CFM

**RIKON**

## MOTOR

Horsepower	1/2 HP
Amps	4.2
Volts, Hz	120V, 60 Hz
Speeds	560, 750, or 1100 CFM
Cubic Feet Per Minute	1100 CFM
Filter Size	12" x 24" x 1"
Filter (Microns)	Outer 5, Inner 1
Sound Rating	73 dB on High
Timer Settings	1, 2, or 4 Hour Segments
Cleans	20' x 20' x 8' Room 22 Times Per Hour

## CONSTRUCTION

Cabinet	20 Gauge Steel
Blower Wheel Material	Steel
Blower Type	Squirrel Cage

## OVERALL

Length	27-3/4"
Width	24-1/2"
Height	12-1/2"
Net Weight	61 lbs.
Shipping Weight	66 lbs.
Shipping Carton	31" x 27" x 14-3/4"

**WARRANTY 5 YEARS**

**1/2 HP AIR FILTRATION SYSTEM 62-1100** creates the most air flow with speed settings of 560, 750 or 1100 CFM, which will clean a 20' x 20' x 8' shop 22 times per hour. For larger shops, or those which are creating excessive dust, the use of two of these systems is recommended. Unit includes fuse overload protection.

## FEATURES

- Sturdy 20 Gauge Steel Cabinet Construction
- Three Speed Settings of 560, 750, 1100 CFM
- Three Timer Settings
- Settings Via Push Buttons or Remote Control
- Quick Release Latches for Easy Filter Changes
- Replaceable Inner and Outer Filters
- Eye Bolts for Ceiling Mounting
- Two Flush Mount Side Carrying Handles

## ACCESSORIES

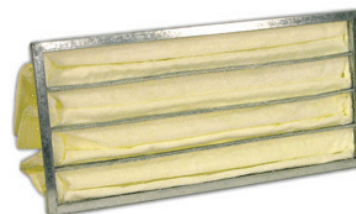
MODEL	DESCRIPTION
61-911F	Outer Filter 12" x 24", 5 Micron
61-910C	Outer Charcoal Filter 12" x 24", 5-10 Micron
61-905	Inner Filter Bag 12" x 24", 1 Micron



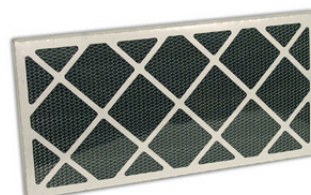
QUICK LATCH SYSTEM FOR CHANGING FILTERS



EYE BOLTS FOR CEILING MOUNTING



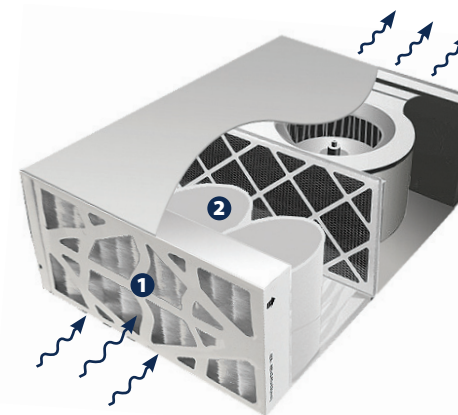
ACCESSORY 61-905  
INNER FILTER BAG 12" X 24", 1 MICRON



ACCESSORY 61-910C  
OUTER CHARCOAL FILTER 12" X 24", 5-10 MICRONS



REMOTE CONTROL



HOW AIR MOVES THROUGH TWO STAGE  
AIR FILTRATION SYSTEM

# 20-800H 8" Benchtop Jointer with Insert Cutter Head

**RIKON**

## MOTOR

Amps	10
Volts, Hz	120V, 60Hz
Speed (No Load)	20,000 RPM

## CUTTING CAPACITY

Max. Cutting Width	8"
Max. Depth of Cut	1/8"
Min. Length of Stock	10"
Min. Width of Stock	3/4"
Min. Thickness of Stock	1/2"
Table Size (2)	14-1/4" x 8-3/16"
Overall Table Size (L x W)	30-1/2" x 8-3/16"
Overall Table Size with Extension (L x W)	51-1/2" x 8-3/16"
Table Height from Base	8-3/8"

## CUTTERHEAD

Speed	12,000 RPM
Number of HSS Inserts (2 sided)	16
HSS Insert Size	14.2 mm x 14.2 mm x 2 mm
Number of Cutterhead Rows	6
Diameter	2"
Cuts per Minute	72,000

## FENCE

Size	19-3/4" x 4-3/8"
Tilt	90° to 135°

## OVERALL

L x W x H	18-3/4" x 51-1/2" x 13"
Base Size (L x W)	19" x 11-1/4"
Dust Port (OD) Diameter	1 @ 4" & 2-1/2"
Net Weight	49 lbs.
Shipping Weight	61 lbs.
Shipping Carton	36-1/4" x 15-1/2" x 11-1/2"

## WARRANTY

**5 YEARS**

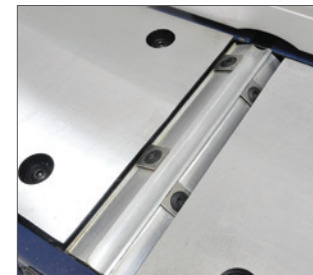
**8" BENCHTOP JOINTER 20-800H** has a 6 row helical-style cutter head with 16 CARBIDE, 2-edge insert cutters for super cutting action, flat surfacing results, and easy knife changes. Table extensions expand the work surface from 30-1/2" to 51-1/2" long. Features rigid, all-metal construction, machined aluminum tables, a quick depth setting mechanism with scale, adjustable fence that tilts from 90° to 45° quickly and accurately, spring-loaded safety guard, 4" & 2-1/2" dust ports, front safety on/off switch and two push blocks.

## FEATURES

- Helical Cutter Head with 16 Two-sided Carbide Inserts
- Large 19 3/4" x 4 3/8" Fence Tilts 90° to 135°
- Safety On/Off Switch
- Easy Read Depth Scale
- Portable at Only 49 lbs.
- Full Table Size 30-1/2" x 8-3/16" Extends to 51-1/2" x 8-3/16"

## ACCESSORIES

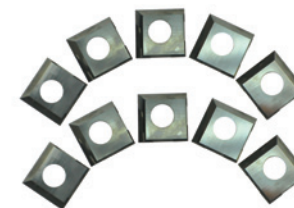
MODEL	DESCRIPTION
25-499	HSS 2-Edge Inserts (10 Pack) 14.2 mm x 14.2 mm x 2 mm
25-499C	Carbide 2-Edge Inserts (10 Pack) 14.2 mm x 14.2 mm x 2 mm
25-593	Mounting Screws T25 (10 Pack) for Inserts 25-499, 25-499C
25-410	Steel Stand H. 29-1/4" Top 23" x 14", Base 31" x 22"



HELICAL-STYLE CUTTER HEAD WITH 16 TWO-SIDED CARBIDE INSERTS



DEPTH SCALE AND SAFETY ON/OFF SWITCH



ACCESSORY 25-499C CARBIDE 2-EDGE INSERTS (10 PACK)



LARGE FENCE 19-3/4" x 4-3/8" TILTS 90° TO 135°



8" BENCHTOP JOINTER 20-800H SHOWN WITH EXTENDED TABLE

*\*Note: The 20-800H Jointer can be mounted on the 25-410 Stand with the addition of a wooden/plywood top (not included).*

# 25-135H 13" Portable Planer with Helical Style Cutterhead

**RIKON**

## MOTOR

Amps	15
Volts, Hz	115V, 60 Hz
Speed (No Load)	22,000 RPM

## CUTTING CAPACITY

Max. Depth of Cut	1/16" @ 6" to 13" wide 1/8" within 6" wide
Max. Cutting Width	13"
Max. Cutting Depth	6"
Min. Length of Stock	7"
Min. Width of Stock	3/4"
Min. Thickness of Stock	3/16"
Two Feed Speeds	16 & 26 sf/min
Table Size (L x W)	9-7/16" x 13-1/16"
Extension Tables (2) (L x W)	12" x 14"

## CUTTERHEAD

Speed	10,000 RPM
Number of HSS Inserts (2 Sided)	26
HSS Insert Size	14.2 mm x 14.2 mm x 2 mm
Number of Insert Rows	6
Diameter	2"

## DUST PORT

Dust Port (O.D.)	4" or 2-1/2" Diameter
Dust Collection Minimum CFM	650
Noise Level (No Load)	<100dB

## OVERALL

Height	19-1/4"
Width	22"
Depth	34-1/4"
Base Size	22" x 13-3/8"
Net Weight	68 lbs.
Shipping Weight	76 lbs.
Shipping Carton	24-3/4" x 16" x 20-1/4"

**WARRANTY 5 YEARS**

**13" PORTABLE PLANER 25-135H** features a six row helical-style cutter head and 26 HSS insert cutters. Each indexable knife insert is precision sharpened on two edges and can be easily changed/rotated if damaged or worn – just loosen, rotate, and retighten! The alternating cutter pattern in the cutter head is super-efficient, and with a two-speed feed rate, produces a smooth cut surface. Planer features a threaded 4-post threaded housing for extra head stability when running, side handle for quick table height adjustments, repeat cut setting lever, large fold-up extension tables, flat top with rollers for stock returning, and side carry handles.

## FEATURES

- Powerful 15 AMP Motor
- Helical Style Cutterhead
- 2-Speed Feed Rate
- All Steel Construction
- Easy Blade Access
- Infeed/Outfeed Table Extensions

## ACCESSORIES

MODEL	DESCRIPTION
25-499	HSS 2-Edge Inserts (10 Pack) 14.2 mm x 14.2 mm x 2 mm
25-499C	Carbide 2-Edge Inserts (10 Pack) 14.2 mm x 14.2 mm x 2 mm
25-498	Mounting Screws T25 (10 Pack) for Inserts 25-499, 25-499C
23-901	Flexible/Expandable Roller Stand



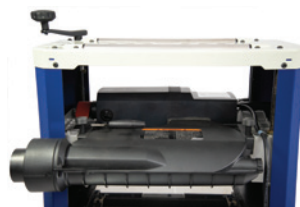
ACCESSORY 23-901  
ROLLER STAND ADJUSTS 23" TO  
36" HIGH & 14-3/4" TO 50" LONG



SIDE MOUNTED DEPTH  
SETTING GAUGE



EASY ACCESS TO CUTTERHEAD  
TO CHANGE INSERT BLADES



DUST PORT OUTLET PROVIDES EASY CONNECTION  
TO DUST COLLECTOR HOSES





# 31-122 12V Li Drill / Impact Driver

**RIKON**

## CORDLESS DRILL

### CHUCK

Keyless 3/8"

### MOTOR

Drill Motor Voltage 12V DC

No Load Speed 0-350 RPM /  
(Low/High) 0-1,350 RPM

Torque 204 IN-LBS (23Nm)

Torque Settings 18

Drill Settings 1

### BATTERY

Cell Type Li-Ion

Voltage 12V DC

Run Capacity 2.0Ah

### WEIGHT

w/Battery 2 lbs. 3 oz.

### CHARGER

Input Power 110-120VAC /60Hz /30W  
(US/CAN)

Output Power 12V DC/ 540 mA  
(US/CAN)

Charger Time 1h

Cord Length 5FT

**WARRANTY 2 YEARS**

## IMPACT DRIVER

### CHUCK

Locking Type 1/4" Hex Shank

### MOTOR

Drill Motor Voltage 12V DC

No Load Speed 0-500 RPM

Torque 885 IN-LBS (100Nm)

### BATTERY

Cell Type Li-Ion

Voltage 12V DC

Run Capacity 2.0Ah

### PERFORMANCE

Impact Rate (P/MIN) 0-3000IPM

Sound Rating (NO LOAD) 83dB

Sound Rating (LOAD) 94dB

### WEIGHT

w/Battery 2 lbs.

**WARRANTY 2 YEARS**

**12V CORDLESS COMBINATION KIT 31-122** comes complete with Drill featuring a 3/8" keyless chuck, 1/4" Impact Driver two batteries and charger. Model #31-120 3/8" Cordless Drill: Strong 12V motor powered by a long lasting 2.0Ah 12V Lithium Ion battery. Two speed all metal gear box produces 0-350 RPM on low range and 0-1,350 RPM on high range. Drill produces 204 in-lbs of torque. Model #31-121 1/4" Impact Driver: Incredible strength producing 885 in-lbs of torque along with a long lasting 2.0Ah 12V Lithium Ion battery give you the ability to drive screws and fasteners effortlessly. Both Drill and Impact Driver have three-stage LED battery level indicators, variable speed switches with FWD/REV function. They also include LED work lights and comfortable rubber grips on ergonomically designed handles to dampen vibration. Includes carrying case.

## 31-120 3/8" CORDLESS DRILL

- 3/8" Keyless Chuck
- 18 Torque Settings +1 Drill Setting
- Two Speed Ranges: 0-350/0-1,350 RPM
- Variable Speed Motor
- FWD/REV Function
- 3 Stage LED Battery Level Indicators
- All Metal Gearing
- Ergonomically Designed Handles
- Comfortable Rubber Grips
- LED Work Light

## 31-121 1/4" IMPACT DRIVER

- 1/4" Quick Release Hex Shank Chuck
- 0-500 RPM Variable Speed Motor
- Produces 885 in-lbs of Torque
- Impacts Per Second: 3000IPS
- FWD/REV Function
- 3 Stage LED Battery Level Indicators
- All Metal Gearing
- Ergonomically Designed Handles
- Comfortable Rubber Grips
- LED Work Light



## ACCESSORIES

MODEL	DESCRIPTION
31-123	12V Li 2.0 Ah Battery
31-124	12V Battery Charger

KIT INCLUDES: 12V Li Drill, Impact Driver,  
12V 2.0 Ah Lithium Ion Battery (2), 12V Charger,  
and Hard Shell Carrying Case



# 31-200 12V Li Polisher with 2" Pad

**RIKON**

## TECH SPECS

Speeds (5)	600/1,200/1,800/ 2,400/3,000 RPM
Battery	12V Li
Pad Size	2"
Length	10-1/2"
Width	2"



**12V CORDLESS SANDER/POLISHER 31-200** is the perfect tool for sanding/polishing a multitude of projects for automotive, wood, metal and home repair. Light-weight and compact design allows easy access to tight spaces. Five preset speeds gives the user the ability to control the 2" hook & loop pad for optimal performance. The 12V Lithium Ion battery will help power through the toughest tasks. Body has comfortable rubber grips to dampen vibration.

## FEATURES

- Spindle Lock
- Soft Grip
- Push Button Speed Changing
- 2" Interchangeable Hook & Loop Pads
- 5 Speed LED Indicator
- 12V Li Battery

## ACCESSORIES

MODEL	DESCRIPTION
31-123	12V Li 2.0 Ah Battery
31-124	12V Battery Charger
31-206	4" Sponge Pad (EA)
31-207	2" (51 mm) Hook & Loop Pad (EA) w/10 mm Thread
31-208	4" (100 mm) Hook & Loop Pad (EA) w/10 mm Thread
31-209	2" Wool Pad (5 Pack)
31-210	4" Wool Pad (5 Pack)
31-211	2" Towel Pad (5 Pack)
31-212	4" Towel Pad (5 Pack)
31-213	2" Sponge Pad (3 Pack)



**KIT INCLUDES:** 1 - Sponge Pad, 1 - Woolen Pad, 1 - Towel Pad (above), Carrying Case (not shown), and Charger (not shown)



ACCESSORY 31-210  
4" WOOL PAD (PK5)



ACCESSORY 31-208  
4" (100MM) HOOK & LOOP PAD (EA) W/10MM THREAD

# 50-114 4" x 36" Belt 8" Disc Sander

**RIKON**

## MOTOR

Horsepower	3/4 HP
Amps	5
Volts, Hz	120V, 60Hz
Speed	3,450 RPM

## TABLES

Disc Table Size	10-3/8" x 5-7/8"
Belt Table Size	7-1/2" x 6-1/4"
Tables Tilt	0° to 45°
Miter Gauge	Included
Miter Gauge Slot	5/8" x 5/16" (16 x 6.5 mm)

## BELT

Belt Size	4" x 36"
Speed	2,165 (SFPM)
Tilt	0° – 90°

## DISC

Diameter	8" PSA
Speed	3,450 RPM

## OVERALL

Height	20"
Width	25-1/4"
Depth	14"
Base Size	10-7/8" x 8-5/8"
Dust Ports	2@1-1/2" O.D.
Net Weight	32.4 lbs.
Shipping Weight	34 lbs.
Shipping Carton	20-1/2" x 22-1/2" x 11-1/4"

**WARRANTY 5 YEARS**

**4" x 36" BELT / 8" DISC SANDER 50-114** is a powerful sanding machine that features a direct drive power system driving both the disc and belt. The speeds eat through wood effortlessly, while still giving the user fine control of shaping and finishing projects. Belt frame adjusts in any position from horizontal to vertical to meet your sanding needs. Both the Disc and Belts' support fences tilts 0-45 degrees for angled work. Machine features precision die-cast metal base, quick release belt lever, 4" x 36" sanding belt, and large 8" diameter sanding disc.

## FEATURES

- Frame is made of Sturdy Die-Cast Metal for Precision Fitting Of Parts And Rigidity During Use
- Tracking Knobs Allow Correct Positioning of Belts on Frames
- Work Tables Adjust 0° to 45° with Large Locking Lever Handles for Sanding Angles
- PSA Sanding Discs Apply Quickly to the Metal Disc for Instant Use
- On/Off Switch has Removable Safety Tab for Extra Security

## ACCESSORIES

### MODEL DESCRIPTION

52-114	Dust Fitting Adapter Set
--------	--------------------------

### SANDING BELTS

50-4080	4" x 36" Sanding Belt 80 grit (PK2)
50-4120	4" x 36" Sanding Belt 120 grit (PK2)
50-4150	4" x 36" Sanding Belt 150 grit (PK2)
50-4180	4" x 36" Sanding Belt 180 grit (PK2)
50-4220	4" x 36" Sanding Belt 240 grit (PK2)
50-4999	4" x 36" Sanding Belt Asst (2 each 80, 150, 240 grit) (PK6)

### SANDING DISCS

50-8060	8" Disc 60 Grit PSA (PK5)
50-8080	8" Disc 80 Grit PSA (PK5)
50-8120	8" Disc 120 Grit PSA (PK5)
50-8180	8" Disc 180 Grit PSA (PK5)
50-8220	8" Disc 240 Grit PSA (PK5)
50-8999	8" Disc Asst Grit PSA (PK10)

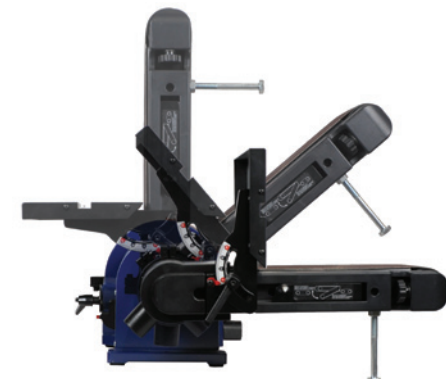
**INCLUDES:**  
2 Tilting Tables for Sanding Fine, Detail and Angled Work, and a Miter Gauge



ACCESSORY 52-114  
4" DUST FITTING ADAPTER SET



TABLE TILTS FROM 0° TO 45°



BELT TILTS FROM 0° TO 90°



# 15-400 Metal Cutting Bandsaw

**RIKON**

## MOTOR

Horsepower	3/4HP TEFC
Amps	4.6
Volts, Hz	120V, 60Hz
Speed	1,720 RPM

## BLADE

Length	64-1/2" (1638 mm)
Width	1/2" (12.7 mm)
Speed	80/120/180 (FPM)

## CUTTING CAPACITY

Max Depth of Square Cut @ 90°	4" x 6" (101 x 152 mm)
Max Depth of Square Cut @ 45°	2-3/4" (70 mm)
Max Depth of Circular Cut @ 90°	4-1/2" (114 mm)
Max Depth of Circular Cut @ 45°	2-3/4" (70 mm)
Cutting Angle	0-45°

## VERTICAL TABLE

Size	9-5/8" x 9-3/8" (245 x 238 mm)
Height to Floor	32-3/4" (832 mm)

## OVERALL

Horizontal Height	37-1/2" (953 mm)
Vertical Height	54" (1,372 mm)
Width	37-1/2" (953 mm)
Depth	18-1/4" (464 mm)
Net Weight	115 lbs (52 kg)
Shipping Weight	123.5 lbs (56 kg)
Shipping Carton	41" x 14" x 17-1/2" (1040 mm x 360 mm x 445 mm)

**WARRANTY 5 YEARS**

**4" X 6" METAL CUTTING BANDSAW 15-400** is designed to cut as a horizontal bow saw but will also operate as a vertical bandsaw when a table (included) is installed. Three blade speeds of 80, 120 and 180 feet per minute are ideal for optimizing cut performance in brass alloys up to stainless steel. Miter angle cuts are possible up to 45°. The blade can be fed into the material manually or controlled automatically and hands-free with a spring-assist torsion system. When a cutting operation is completed the saw will automatically shut off.

## FEATURES

- Rugged cast iron bed and frame
- Powerful 3/4 HP, 120V motor
- 4-1/2" Maximum Depth of Circular Cut @ 90°
- Horizontal Table Size (W x D) 9-5/8" x 9-3/8"
- Speed Range 80/120/180 ft/min
- Standard 64-1/2" Blade Length

## BANDSAW BLADES

PART #	LENGTH	WIDTH	GAUGE	TPI	STYLE
19-6401	64-1/2"	1/2"	0.025"	14 TPI	Bi-Metal Reg Metal Cutting Blade
19-6402	64-1/2"	1/2"	0.025"	18 TPI	Bi-Metal Reg Metal Cutting Blade
19-6403	64-1/2"	1/2"	0.025"	8/12 TPI	Bi-Metal Vari Metal Cutting Blade
19-6404	64-1/2"	1/2"	0.025"	10/14 TPI	Bi-Metal Vari Metal Cutting Blade
19-6405	64-1/2"	1/2"	0.025"	14/18 TPI	Bi-Metal Vari Metal Cutting Blade



AUTO-OFF SWITCH AUTOMATICALLY SHUTS OFF WHEN A CUTTING OPERATION IS COMPLETED



BUILT-IN ANGLE VISE CLAMP STOCK SECURELY AT ANY ANGLE FROM 0-45°



THREE BLADE SPEEDS OF 80, 120 AND 180 FEET PER MINUTE ARE IDEAL FOR OPTIMIZING CUTTING PERFORMANCE FROM BRASS ALLOYS TO STAINLESS STEEL

# 45-100 10 Ton Kinetic Log Splitter

**RIKON**

## MOTOR

Maximum Splitting Force 10 tons

Motor Power 2 HP TEFC

Voltage, Hz 120V/60Hz

Amperage 9A

Cycle time (seconds) 1.5 sec.

## DIMENSIONS

Maximum Log Length 21" (53 cm)

Maximum Log Dia. 12-1/2" (32 cm)

Wedge Height 6" (150 mm)

Wedge Width 3" (75 mm)

Flywheel Speed Max 400 RPM

Flywheel Diameter 12" (300 mm)

Flywheel Weight 20.5 lbs. (9.30 kg)

## OVERALL

Length 48-1/4" (123 cm)

Width 14-3/16" (36 cm)

Height 30-11/16" (78 cm)

Base Size 43-1/4" x 7-3/4"  
(110 x 19.7 cm)

Weight 141 lbs. (64 kg)

**WARRANTY 2 YEARS**

**10 TON KINETIC LOG SPLITTER 45-100** uses speed and force to split more efficiently. Testing has consistently shown that the 45-100 will easily out-split any conventional 22-Ton hydraulic splitter. And it will do it a whole lot faster, 4-5 times faster than a hydraulic splitter. Ordinary log splitters are slow...painfully slow... because they use hydraulics to gradually force a ram to split a log, then to gradually retract the ram for reuse. But, the 45-100 10 Ton Kinetic Log Splitter will deliver a punch every 1.5 seconds! Amazing power and speed.

## FEATURES

- **Powerful** – Equals the power of a 22-Ton conventional Hydraulic Log Splitter
  - **Efficient** – Split 4-5 times faster than Hydraulic Log Splitter.
  - **Safe** – No hoses, and no hydraulic fluids. Delivers a powerful punch without the hassle of gas, oil, and fumes.
  - **Portable** – Built-in handle and easy-rolling 5" wheels. Enjoy the flexibility to split wood indoors or out.
- 2 HP Motor
  - 10 Ton Splitting Force



2 HP MOTOR DRIVES HEAVY CAST IRON  
COUNTERWEIGHT FOR RAM POWER



**MAXIMUM LOG SIZE**  
**21" L x 12-1/2" DIA.**

# 80-805 / 80-808 8" Low Speed Bench Grinders

**RIKON**

## 80-805 (1/2 HP) 8" Bench Grinder

### MOTOR

Horsepower	1/2 HP
Amps	3
Volts, Hz	120V, 60 Hz
Speed (No Load)	1,750 RPM

### WHEELS & ARBOR

Diameter	8"
Width	1"
Arbor	5/8" (15.8 mm)
Grits	60 and 120

### OVERALL

Length	16-3/8"
Width	10-3/4"
Height	11-1/4"
Base Size	7-5/8" x 5-1/2"
Cord	6 ft.
Net Weight	34.2 lbs.
Shipping Weight	37.5 lbs.
Shipping Carton	19" x 15-1/4" x 11" (L x W x H)

**WARRANTY 5 YEARS**

## ACCESSORIES

MODEL	DESCRIPTION
P80-805-49	60 Grit 8"x 1" AlOx White Grinding Wheel
P80-805-5	120 Grit 8"x 1" AlOx White Grinding Wheel
P80-805-54	Diamond Faced Grinding Wheel Dresser
80-901	2.5x Magnifying Eye Shield Lens Kit for 80-805

## 80-808 (1 HP) 8" Bench Grinder

### MOTOR

Horsepower	1 HP
Amps	7
Volts, Hz	120V, 60 Hz
Speed (No Load)	1,750 RPM

### WHEELS & ARBOR

Diameter	8"
Width	1"
Arbor	5/8" (15.8 mm)
Grits	60 and 120

### OVERALL

Length	10-1/4"
Width	19"
Height	12-1/8"
Base Size	9-1/2" x 6-3/4"
Cord	6 ft.
Net Weight	54 lbs.
Shipping Weight	59 lbs.
Shipping Carton	24" x 15-3/8" x 14" (L x W x H)

**WARRANTY 5 YEARS**

80-899	Steel Wheel Flange for Low Speed Grinder 80-805
P80-805-4	Cast Wheel Flange for Low Speed Grinder 80-808
80-902	Left Hand FLAT Tool Rest for 80-805 & 80-808
P80-808-4	LED Light Bulb for 80-808

## 80-805 (1/2 HP)



## 80-808 (1 HP)



LED WORK LIGHT

Sharpening tools or general grinding work is made a bit easier and more exact with RIKON's low speed 1,750 RPM and variable speed bench grinders, where other grinders operate at only a high 3,450 RPM! Lower speeds mean that metal being removed can be controlled better, and reduces heat build-up and 'bluing' of a cutting edge being sharpened – ruining the hardness and temper of the tool.

### 1/2 HP LOW SPEED BENCH GRINDER #80-805

has more than enough power for small workshops and for carpenters, turners, carvers and other craftspeople working with hand tools. Its left tool rest includes a groove in its design for the sharpening of drill bits. Wheel flanges are stamped. Grinder includes a diamond faced wheel dressing tool.

### 1 HP LOW SPEED BENCH GRINDER #80-808

is a larger size motor and will tackle the tough grinding jobs that are typical in production shops, as well as the finesse shaping and sharpening of hand tools. Tool rests on this machine are extra-large and flat, without a drill bit sharpening groove. Wheel flanges are cast metal. Grinder includes 1-1/4" O.D. dual dust collection ports on the rear of the wheel guards, and a second pair of eye shields with 2.5x magnification for close-up inspection of your edges being ground.

### FEATURES

- Cast iron bases with rubber feet reduce vibration
- Holes in the base for mounting to a bench or stand
- Adjustable cast metal tool rests give solid tool support
- Adjustable safety eye shields give added protection
- Adjustable spark shields keep users safe from hot sparks
- Aluminum oxide grinding wheels give excellent cutting action
- 60 Grit abrasive wheel for rough grinding and metal removal
- 120 Grit abrasive wheel for final sharpening or shaping
- Safety on/off switches with removable security tabs for extra protection against unauthorized use.



80-805 TOOL REST WITH GROOVE FOR SHARPENING DRILL BITS



2.5X MAGNIFYING EYE SHIELDS ON #80-808



80-808 INCLUDES DUST PORTS ON THE WHEEL GUARDS

WORK STANDS – Please visit [rikontools.com](http://rikontools.com) for these Accessories.

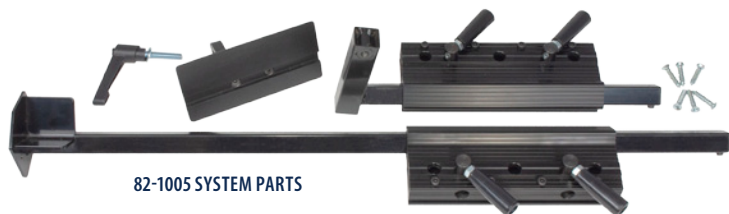


# 82-1005~8 Pro Sharpening System

**RIKON**

## PRO SHARPENING SYSTEM #82-1005

Sharpen your woodturning tools like a PRO! Used with your 6" or 8" bench grinder, this System includes the basic set-up for putting perfect, sharp edges on gouges, chisels, scrapers and other blades. The 2 adjustable arms allow for easy setting of different grinding angles for your shop tools. Set includes: Locking Base Assemblies (2), Long V-Arm, Short 90 degree Platform Arm, Tool Rest Platform for Short Arm, Adjustable Lever Handle and Mounting Hardware.



USE PRO SHARPENING SYSTEM'S PLATFORM TO SHARPEN A VARIETY OF BLADES



## FINGERNAIL GOUGE GRINDING ATTACHMENT #82-1007

holds woodturning gouges for sharpening bevels at consistent, repeatable angles and shape with your bench grinder and the PRO Sharpening System. Adjusts 40°, so setting bevels to grind on your tools is easy. Jig's clamp firmly holds tool shafts 3/16" to 1-3/8" thick and up to 1-9/16" wide. Ideal for sharpening spindle and bowl gouges, roughing gouges, and for maintaining their cutting edges – from simple bevels, to side ground variations, to the traditional fingernail shape. Works for sharpening carving tools, too!



SHARPEN TOOLS AT EXACT ANGLES



TOOL HOLDERS ADJUST FOR SETTING PROPER SKEW ANGLES

## SKEW GRINDING ATTACHMENT #82-1006

securely positions woodturning skew chisels at offset angles to a grinding wheel for precise sharpening of the tool's double beveled cutting edge. Left and Right V-shaped holders ensure that when your skew chisel is moved between the two holders to grind each bevel, the same exact angles are maintained. This means you get better control of your tool when sharpening, which is critical for creating the thin cutting edge that the skew features.



**ANGLE GAUGE #82-1008** makes it easy to grind turning tools to exact skew angles using the System's Platform tool rest. Ideal for sharpening skews, diamond point scrapers and threading cutters for wood or metal turning tools. Gauge has 2 angle scales of 0° to 24° (90°~ 74°) right and left.

**RIKON**

***Pro Tools for Tool Pros***

**RIKON POWER TOOLS®**

16 Progress Road, Billerica, MA 01821  
877-884-5167 (toll free) or 978-528-5380

**RIKONTOOLS.COM**